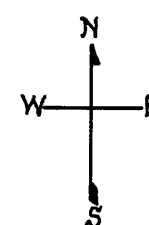


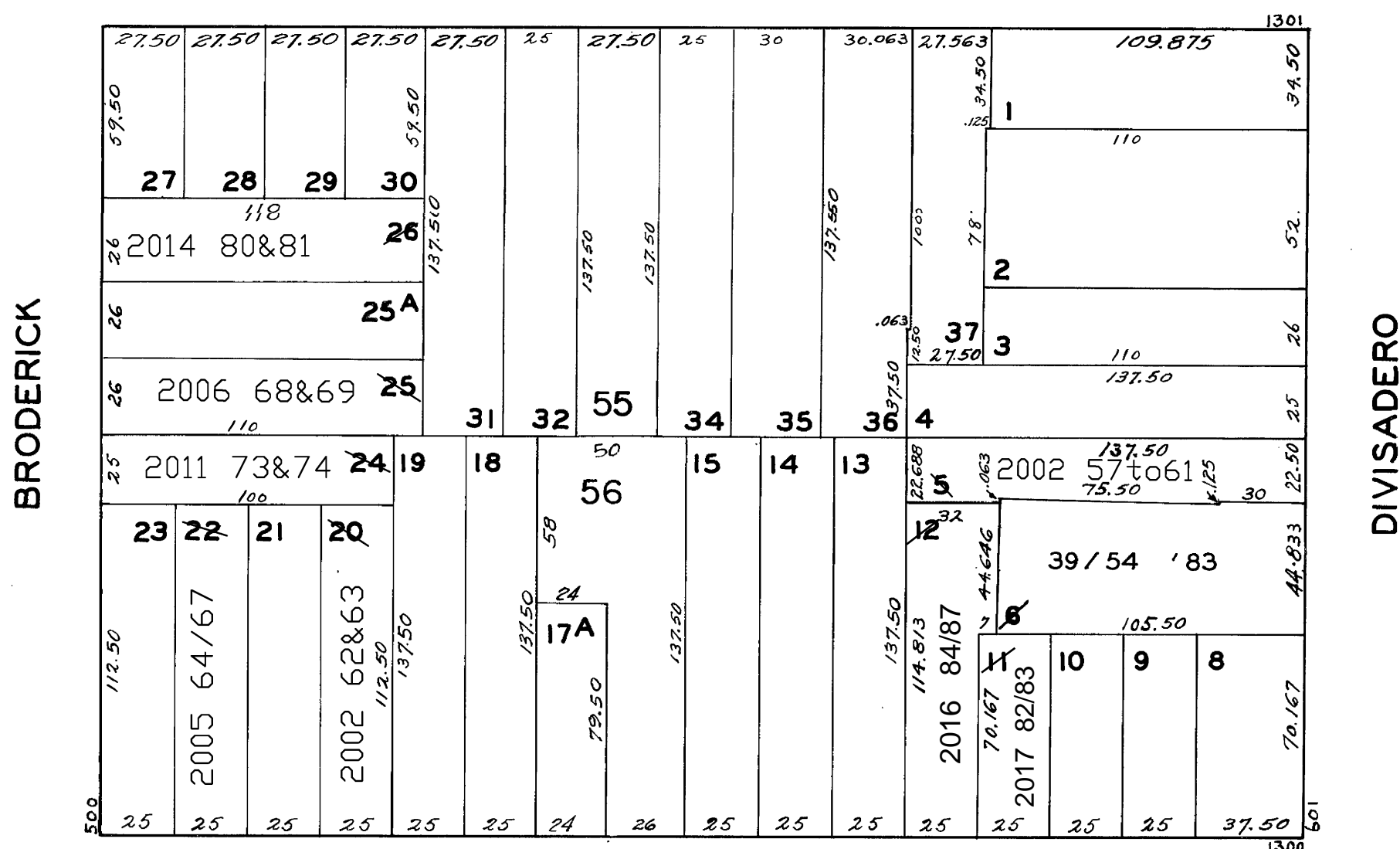
1201

**© COPYRIGHT SAN FRANCISCO  
CITY & COUNTY ASSESSOR 1995**

REVISED 1970  
 " '83  
 " '88  
 Revised 2002  
 Revised 2005  
 Revised 2006  
 Revised 2011  
 Revised 2014  
 REVISED 2016  
 REVISED 2017



**GROVE**



**HAYES**

## A CONDOMINIUM

<u>LOT</u>	<u>UNIT</u>	<u>% COMM AREA</u>
39	1	30.63
40	2	5.79
41	3	5.37
42	4	6.25
43	5	4.37
44	6	3.68
45	7	4.01
46	8	3.98
47	9	3.90
48	10	5.82
49	11	5.82
50	12	4.60
51	13	3.88
52	14	4.02
53	15	3.98
54	16	3.90

1376-1378 HAYES ST.  
A CONDOMINIUM

<u>LOT</u>	<u>UNIT</u>	<u>% COMM. AREA</u>
62	1	48.36
63	2	51.64

1390 HAYES ST.  
A CONDOMINIUM

LOT	UNIT	% COMM. AREA
64	1	23.50
65	2	39.70
66	3	26.80
67	4	10.00

631 DIVISADERO ST.  
A CONDOMINIUM

<u>LOT</u>	<u>UNIT</u>	<u>% COMM. AREA</u>
57	1	29.4
58	2	23.3
59	3	24.2
60	4	11.4
61	5	11.7

534-536 BRODERICK ST.  
A CONDOMINIUM

LOT	UNIT	% COMM. AREA
68	534	52
69	536	48