

ASSESSOR-RECORDER'S OFFICE

© COPYRIGHT SAN FRANCISCO
CITY & COUNTY ASSESSOR 1995

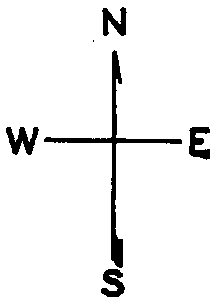
1231

W. A. BLK. 674

Lot 28 into lots 38 to 40 for 1997 roll
Lot 2 into lots 41 & 42 for 2009 roll
lot22 into lots35/37 for 2001 roll
lot27 into lots43to46 for 2009 roll
lots11&12 into lot52 for 2011 roll
lot34 into lots48&49 for 2011 roll
lot27A into lots55&56 for 2013 roll
lot30 into lots50&51 for 2013 roll
lot29 into lots57&58 for 2013 roll
Lot 26 into lots 53 & 54 for 2015 roll
Lot 33 into lots 59 & 60 for 2016 roll
Lot 8 into lots 61 to 65 for 2018 roll

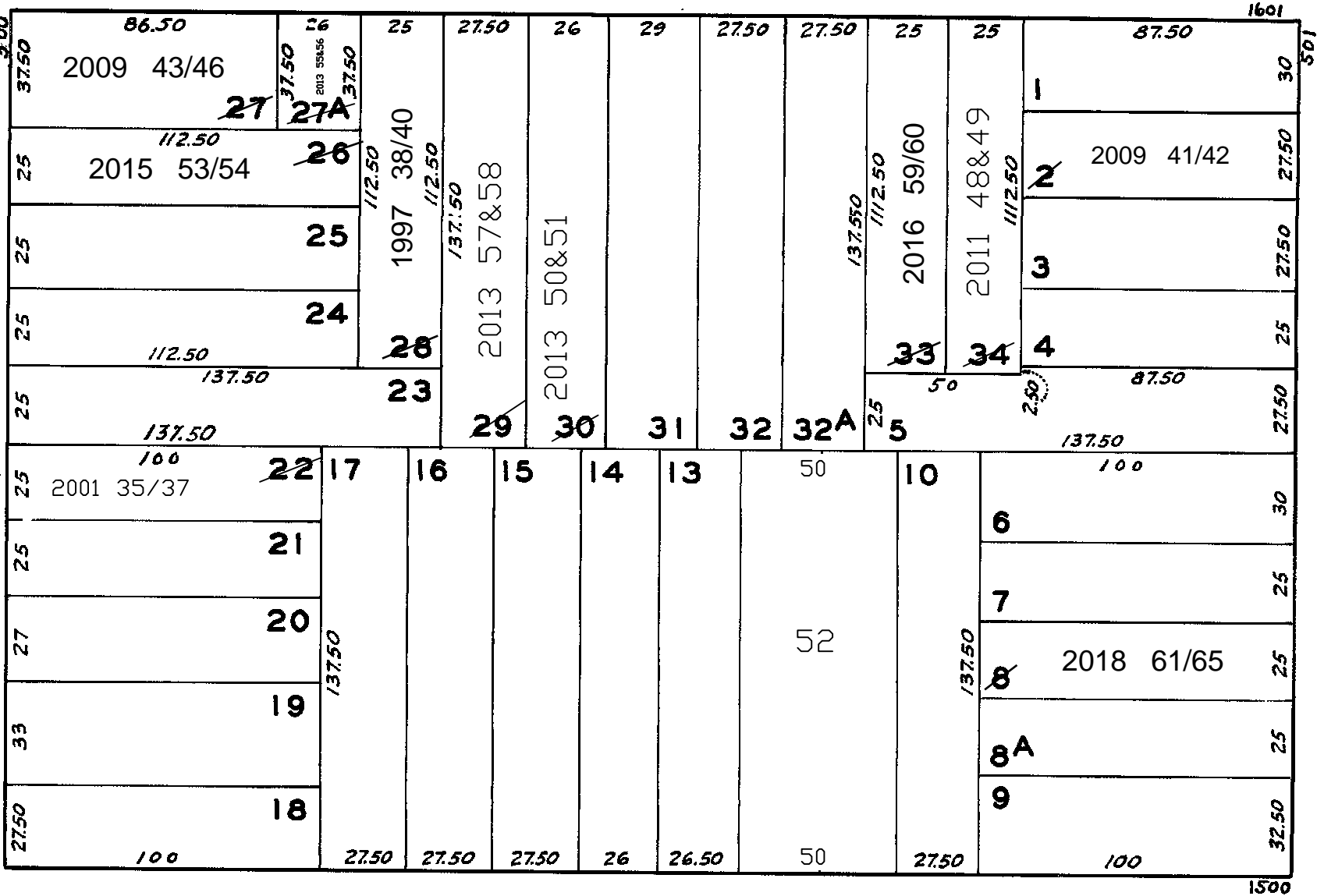
REVISED 1997
Revised 2001
Revised 2009
Revised 2011
Revised 2013
REVISED 2015
REVISED 2016
REVISED 2018

PAGE



CLAYTON

ASHBURY



HAIGHT

532-536 CLAYTON ST.

A CONDOMINIUM

LOT UNIT % COMM. AREA

35	536	31.01
36	534	33.08
37	532	35.91