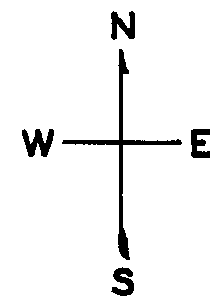


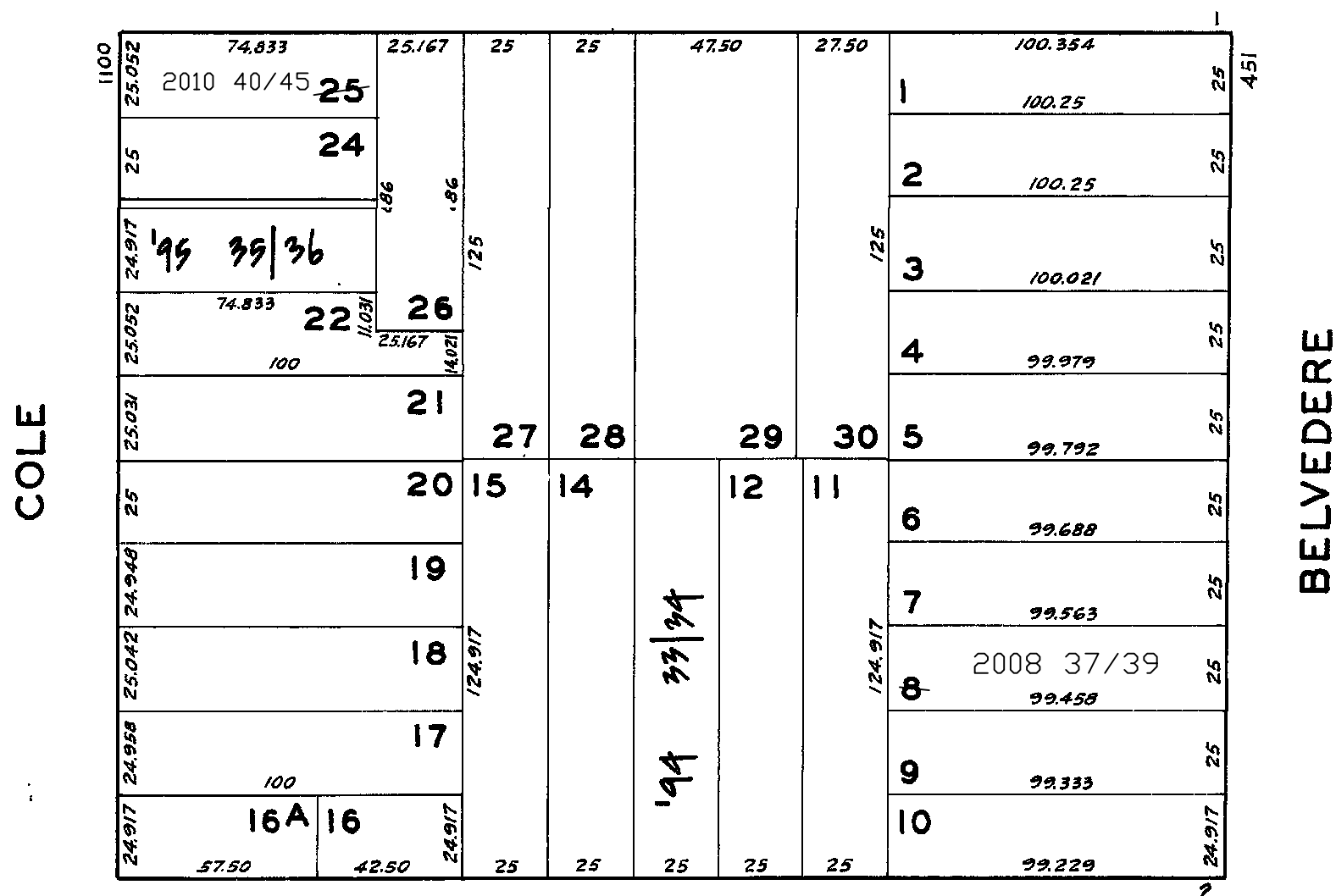
lot8 into lots37/39 for 2008 roll
lot25 into lots40/45 for 2010 roll

Revised 1999
" '95

Revised 2008
Revised 2010



GRATTAN



36-38 ALMA ST.

A CONDOMINIUM

LOT	UNIT	% COMM. AREA
33	36	55
34	38	45

1112-1114 COLE ST.

A CONDOMINIUM

LOT	UNIT	% COMM. AREA
35	1112	50
36	1114	50