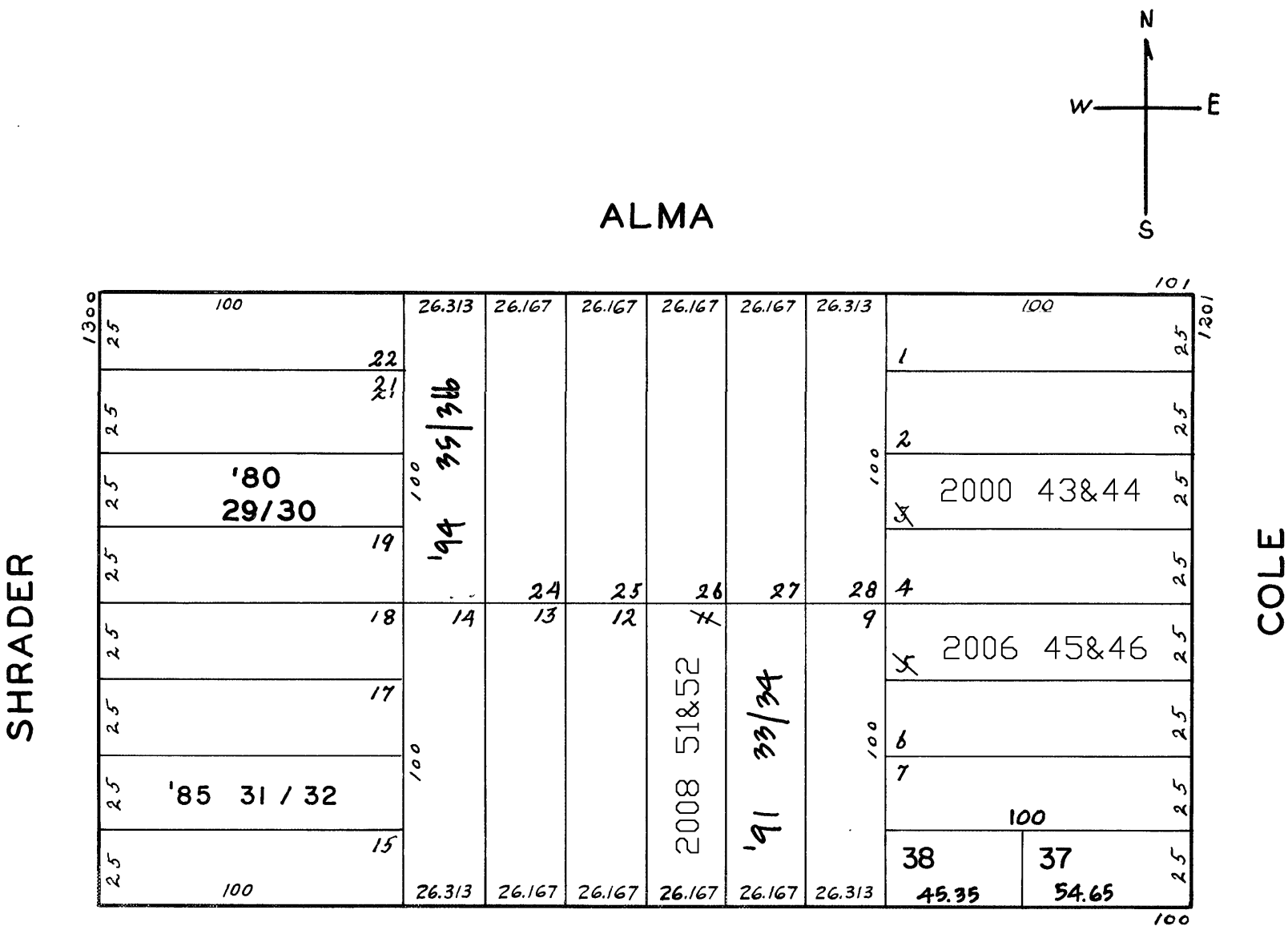


© COPYRIGHT SAN FRANCISCO
CITY & COUNTY ASSESSOR 1995
lot 3 into lot 43 & 44 for 2000 roll
lot5 into lot45&46 for 2006 roll
lot11 into lots51&52 for 2008 roll

1284

W. A. BLK. 879

REVISED '80
" '85
" '91
" '93
" '94
Revised 2000
Revised 2006
Revised 2008



1312 SHRADER ST.			
A CONDOMINIUM			
LOT NO.	UNIT NO.	% COMMON AREA	
29	1	1/2	
30	2	1/2	

1336 - 1338 SHRADER ST.			
A CONDOMINIUM			
LOT NO.	UNIT NO.	% COMMON AREA	
31	1336	47.27	
32	1338	52.73	

130 - 132 RIVOLI ST.			
A CONDOMINIUM			
LOT	UNIT	% COMM. AREA	
33	132	40.37	
34	130	59.63	

1215-1217 COLE ST.			
A CONDOMINIUM			
LOT	UNIT	% COMM. AREA	
43	1217	56.6	
44	1215	43.4	

1225-1227 COLE ST.			
A CONDOMINIUM			
LOT	UNIT	% COMM. AREA	
45	1	30.87	
46	2	69.13	

155-157 ALMA ST.			
A CONDOMINIUM			
LOT	UNIT	% COMM. AREA	
35	155	55.69	
36	157	44.31	