

ASSESSOR-RECORDER'S OFFICE

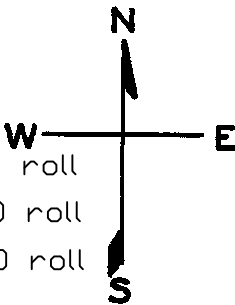
LOTS MERGED

Lot 28 merged into lot 27-1944
" 19 " " 18 "

lot34 into lots57&58 for 1998 roll
lot45 into lots59/61 for 2002 roll

© COPYRIGHT SAN FRANCISCO
CITY & COUNTY ASSESSOR 1995

lot10 into lots55&56 for 2003 roll
lot65 into lots62/64 for 2010 roll
lot27 into lots65&66 for 2010 roll

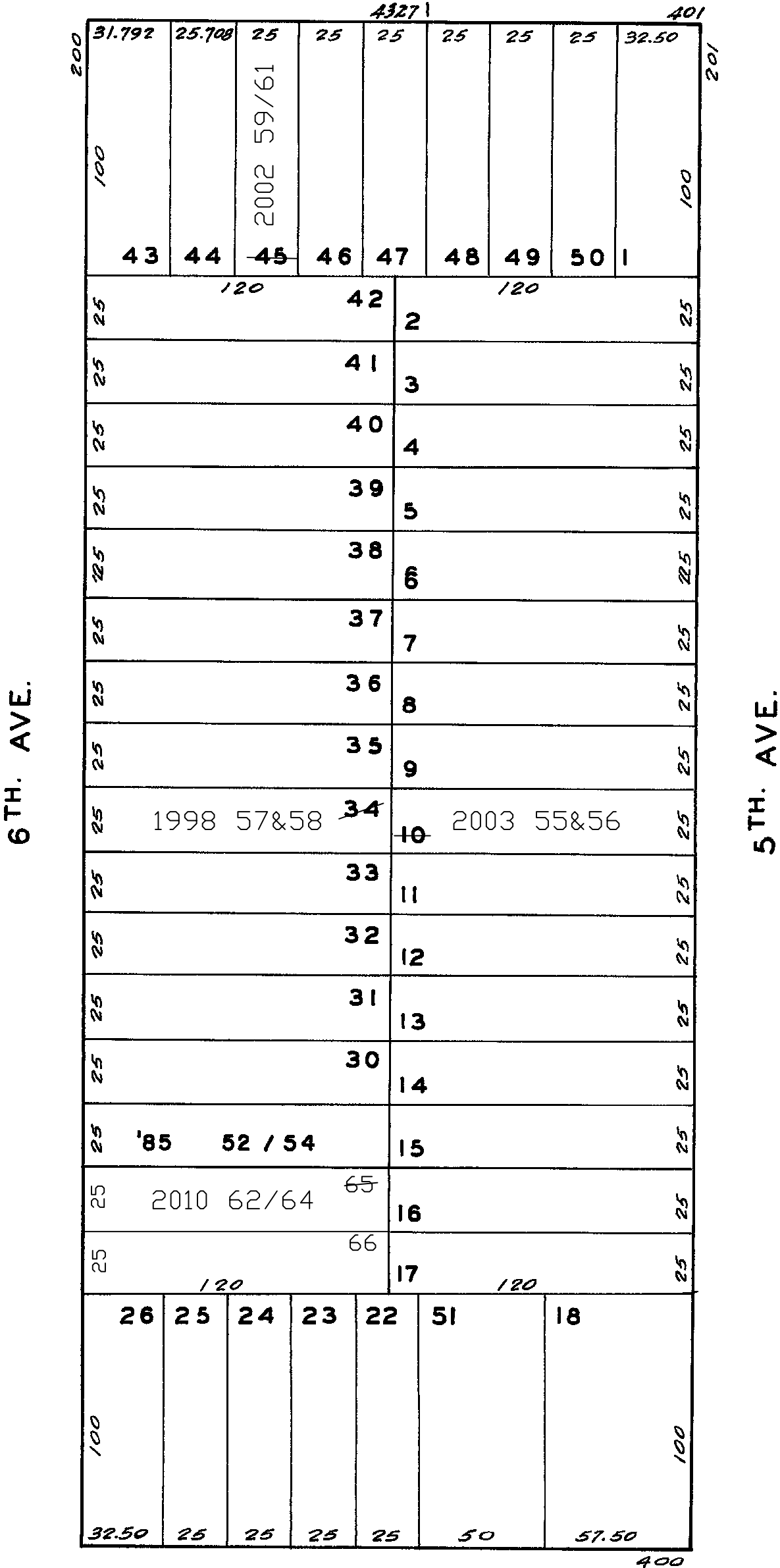


1428

RICHMOND BLK. 177

REVISED '57
" '85
Revised 1998
Revised 2002
Revised 2003
Revised 2010

CALIFORNIA CORNWALL



268 6TH AVENUE
A CONDOMINIUM

LOT NO.	UNIT NO.	% COMMON AREA
52	1	38.01
53	2	34.19
54	3	27.80

4339 CALIFORNIA ST.
A CONDOMINIUM

LOT	UNIT	% COMM. AREA
59	1	33.34
60	2	33.33
61	3	33.33

248-250 SIXTH AVE.
A CONDOMINIUM

LOT	UNIT	% COMM. AREA
57	248	64.95
58	250	35.05

249-251 5th Ave.
A CONDOMINIUM

LOT	UNIT	% COMM. AREA
55	251	39.08
56	249	60.92

CLEMENT