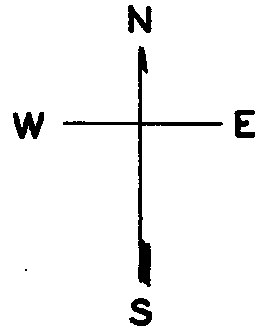


lot10C into lots53&54 for 2009 roll
lot31 into lots55&56 for 2011 roll

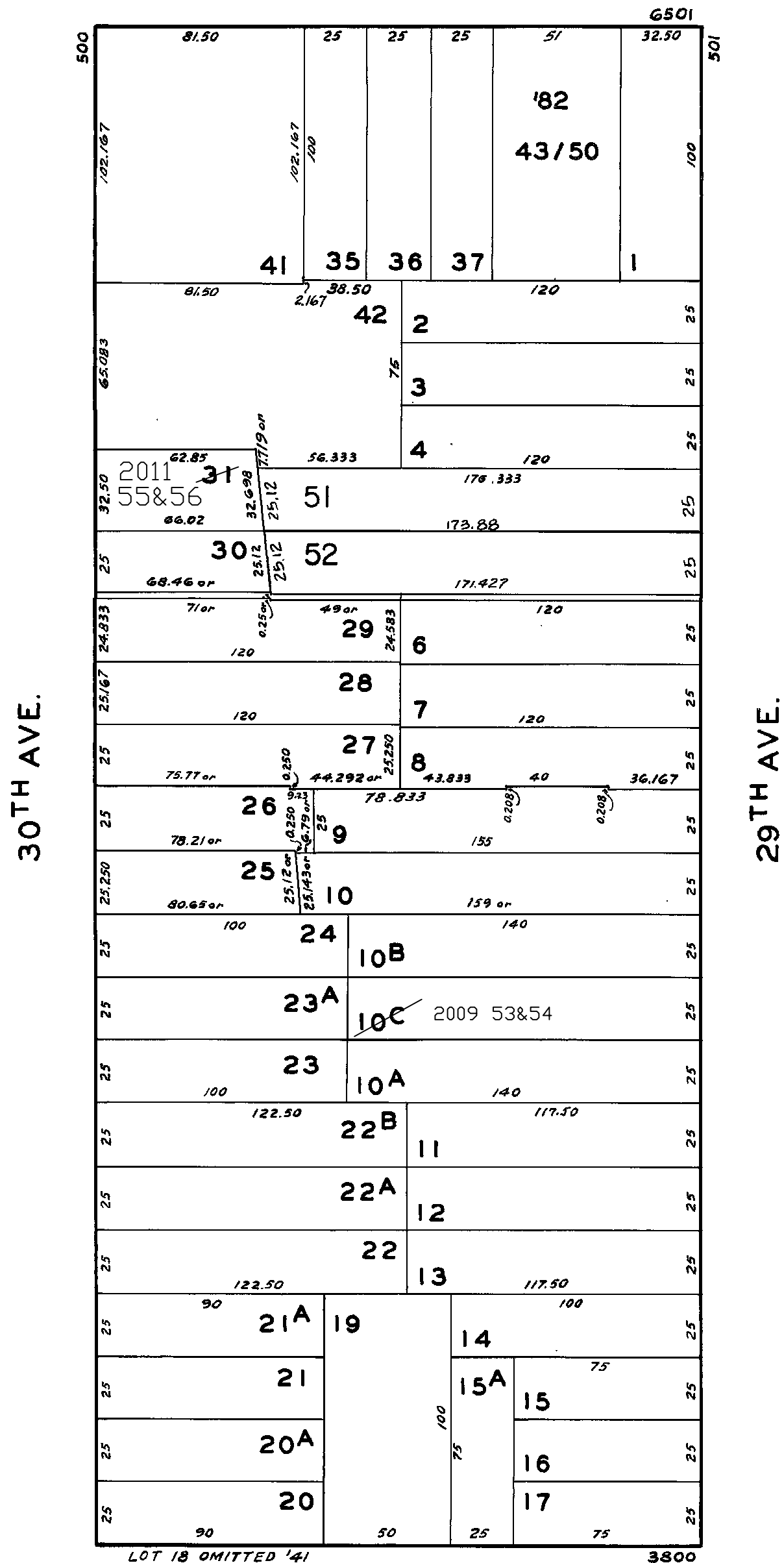


REVISED '62
" '70
" '82
" '88

Revised 2009
Revised 2011

6509 GEARY BLVD.
A CONDOMINIUM
LOT NO. UNIT NO. % COMMON AREA

43	101	8.76
44	102	9.67
45	103	12.57
46	104	11.62
47	201	16.28
48	202	16.91
49	203	12.57
50	204	11.62



ANZA