

ASSESSOR-RECORDER'S OFFICE

© COPYRIGHT SAN FRANCISCO  
CITY & COUNTY ASSESSOR 1995

1532

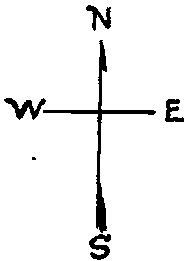
RICHMOND BLK. 272

lot1 into lots42to58 for 2002 roll  
lot26B into lots59&60 for 2002 roll

Revised 2002  
REVISED 2017

LOTS MERGED  
Lot into lot  
19 18 - '944"  
38/39 1/18 - '20  
17 20/21 - '21  
24 23 - '21  
33/37 32 - '21  
1/1A 1 - '25  
21 " 20 - '52'

Lot 28 into lots 61 & 62 for 2017 roll

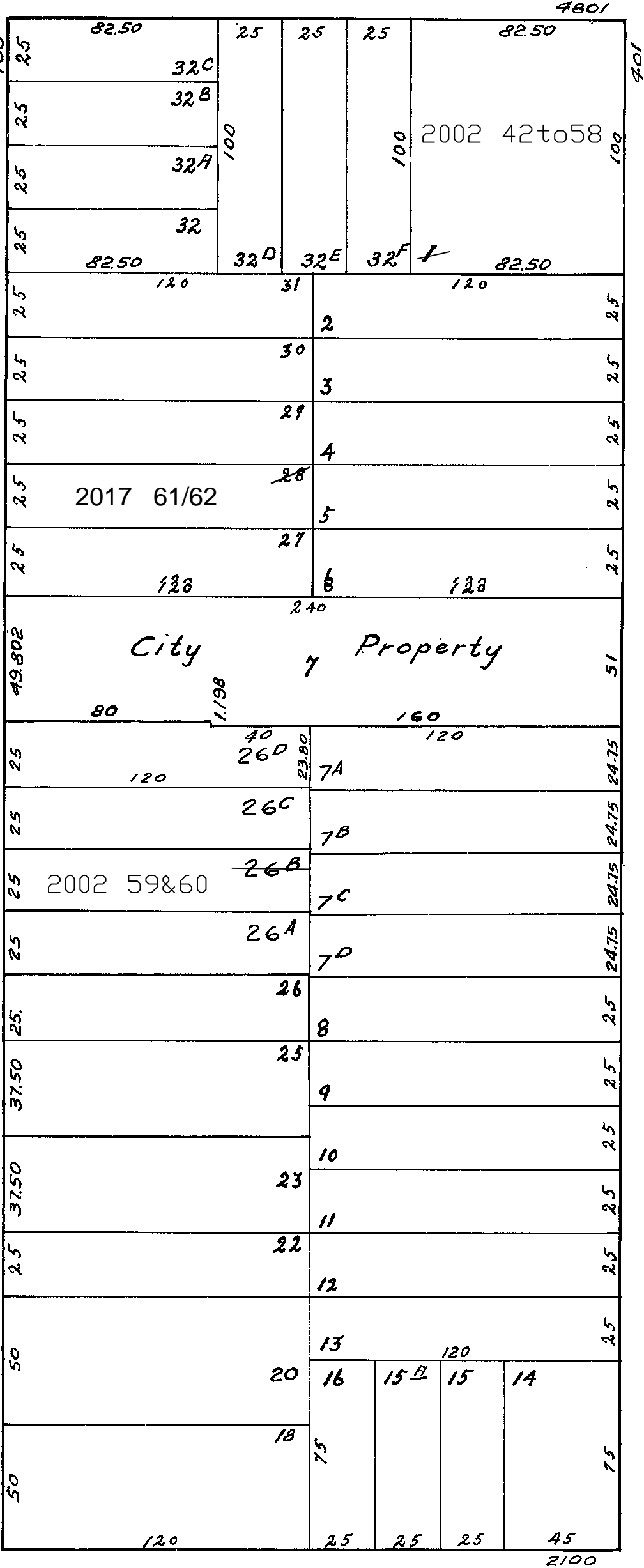


GEARY BLVD.

FUNSTON (13TH) AVE.

12TH AVE.

4801 GEARY BLVD.			
A CONDOMINIUM			
LOT	UNIT	% COMM.	AREA
42	101A	6.98	
43	101B	6.82	
44	101C	10.63	
45	201	5.36	
46	202	9.70	
47	203	5.14	
48	204	4.51	
49	205	4.96	
50	301	5.75	
51	302	5.14	
52	303	4.96	
53	304	4.62	
54	401	5.50	
55	402	5.21	
56	403	5.14	
57	404	4.62	
58	405	4.96	



454-456 FUNSTON AVE.			
A CONDOMINIUM			
LOT	UNIT	% COMM.	AREA
59	454	50.00	
60	456	50.00	

ANZA