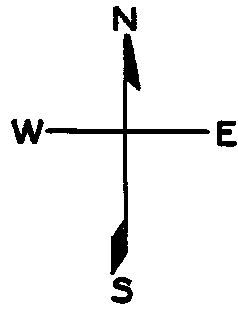


lot37A into lots42&43 for 2005 roll
lot14 into lots44&45 for 2008 roll
lot5 into lots46&47 for 2010 roll



1546
RICHMOND BLK. 286

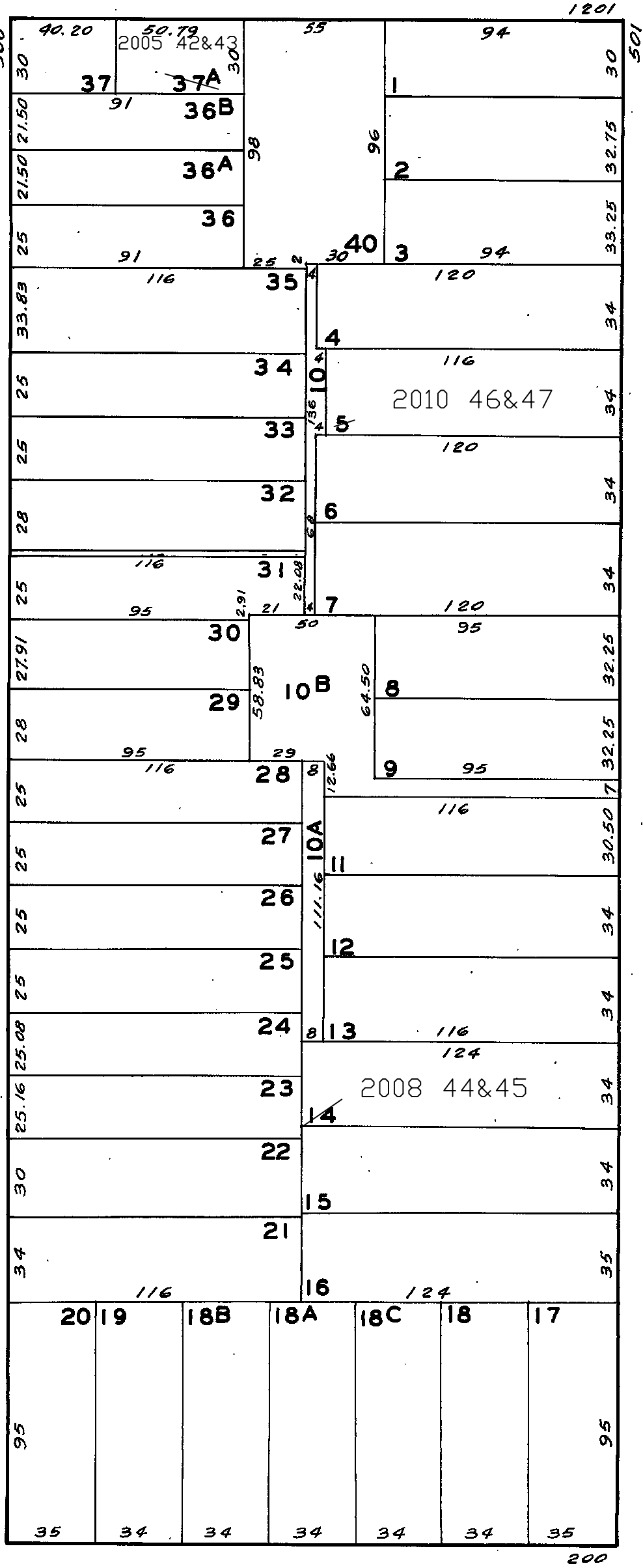
REVISED '66

Revised 2005
Revised 2008
Revised 2010

ANZA

4TH. AVE.

3RD. AVE.



1245-1247 ANZA ST.

A CONDOMINIUM			
LOT	UNIT	% COMM.	AREA
42	1	47.70	
43	2	52.30	

BALBOA