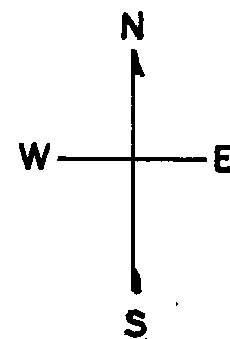


LOTS MERGED

Lot into lot Date  
8/8A 7 1922  
6 5A 1925  
2/5E 36 1 1950

lot16 into lots39&40 for 1998 roll  
lot23B into lots43&44 for 2011 roll



REVISED 1993

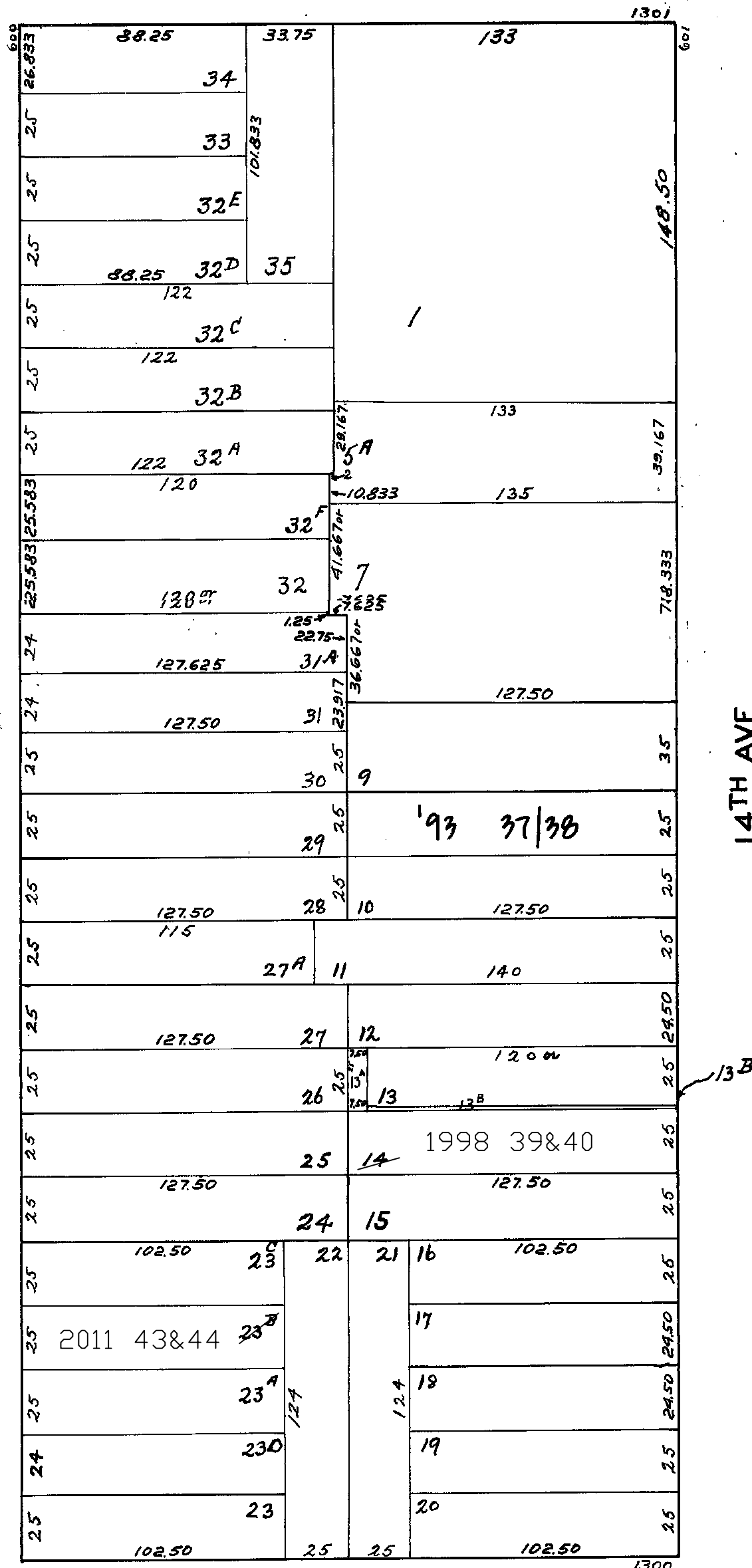
Revised 1998  
Revised 2011

BALBOA

671-673 14TH AVE.  
A CONDOMINIUM

LOT	UNIT	% COMM. AREA
39	671	46.23
40	673	53.77

15TH AVE.



CABRILLO

14TH AVE.

691 - 693 14TH AVE.

A CONDOMINIUM

LOT	UNIT	% COMM. AREA
37	691	53.42
38	693	46.58