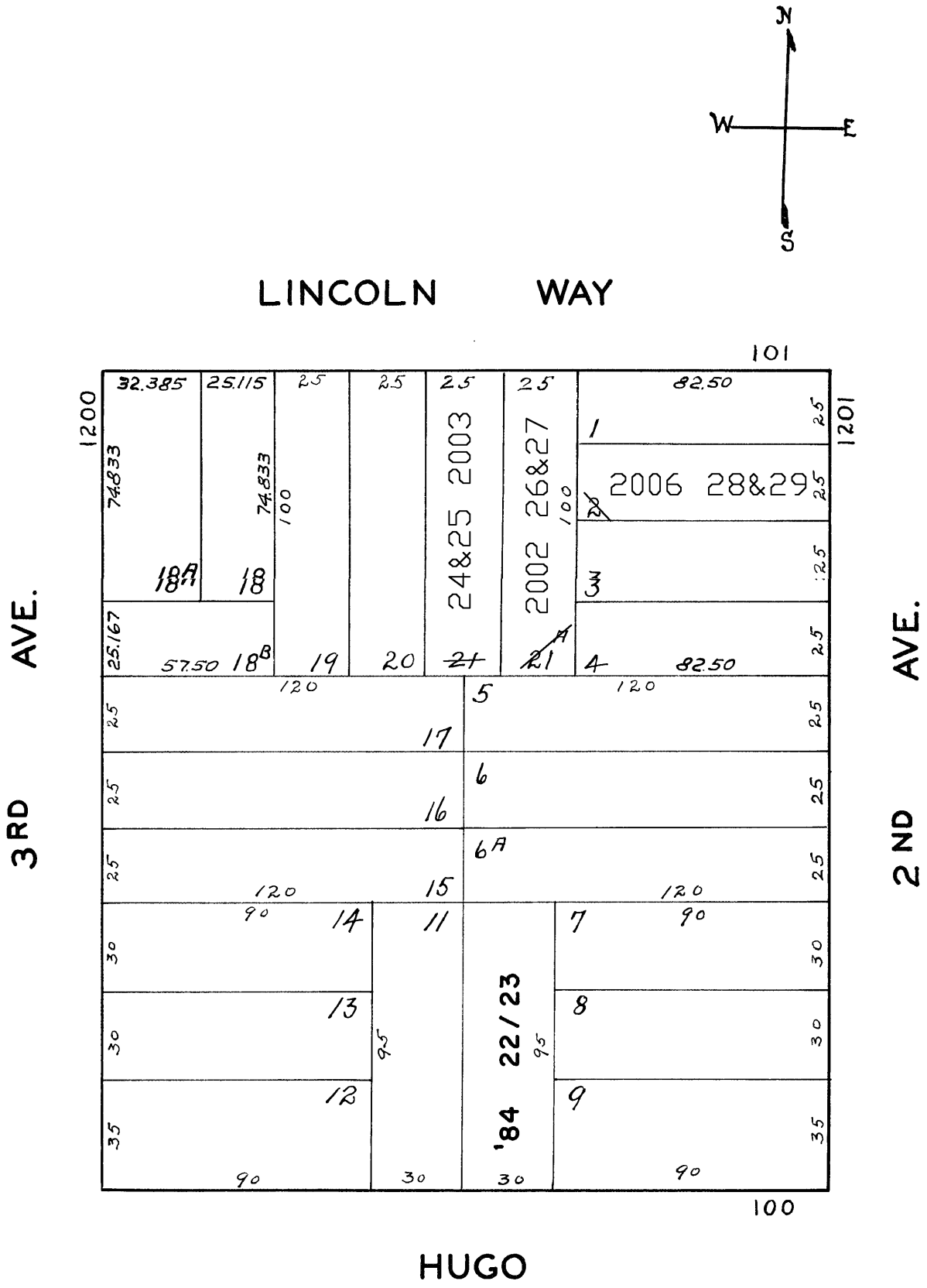


© COPYRIGHT SAN FRANCISCO  
CITY & COUNTY ASSESSOR 1995  
lot21A into lots26&27 for 2002 roll  
lot21 into lots 24&25 for 2003 roll  
lot2 into lots28&29 for 2006 roll

1748

SUNSET BLK. 671

REVISED 1984  
Revised 2002  
Revised 2003  
Revised 2006



127-129 Lincoln Way			
A CONDOMINIUM			
LOT	UNIT	% COMM.	AREA
24	127	53.94	
25	129	46.06	

121-123 LINCOLN WAY			
A CONDOMINIUM			
LOT	UNIT	% COMM.	AREA
26	1	50	
27	2	50	

122-124 HUGO ST.		
A CONDOMINIUM		
LOT NO.	UNIT NO.	% COMMON AREA
22	122	52.630
23	124	47.370

1209-1211 2ND AVE.			
A CONDOMINIUM			
LOT	UNIT	% COMM.	AREA
28	1209	67	
29	1211	33	