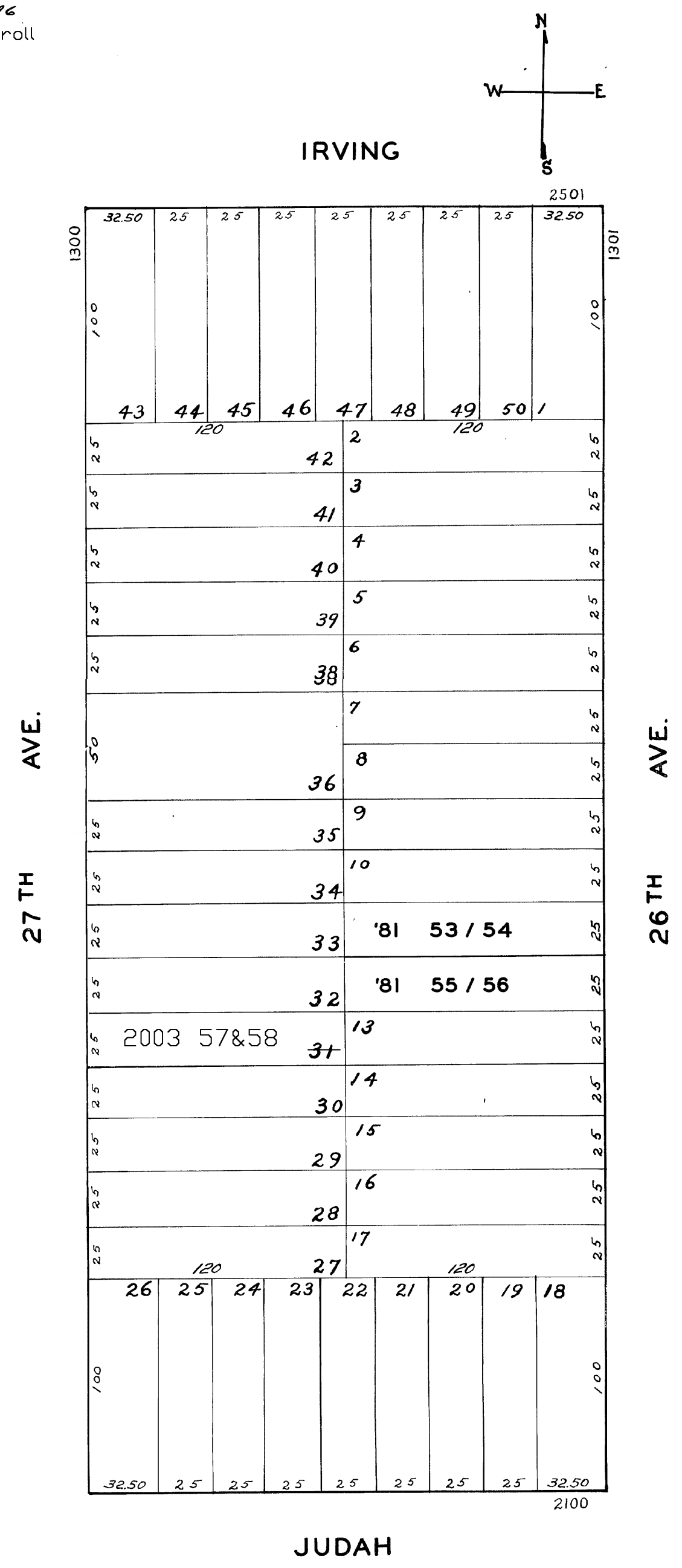


LOTS MERGED
Lots 12 into Lot 19 -
37 " 11 - '46
36 '46
lot31 into lots57&58 for 2003 roll

REVISED '80
" '81
Revised 2003



1362-1364 27th Ave.
A CONDOMINIUM

LOT	UNIT	% COMM. AREA
57	1	57.4
58	2	42.6

1353 - 26TH AVE.
A CONDOMINIUM

LOT NO.	UNIT NO.	% COMMON AREA
53	101	47
54	201	53

1357 - 26TH AVE.
A CONDOMINIUM

LOT NO.	UNIT NO.	% COMMON AREA
55	101	47
56	201	53