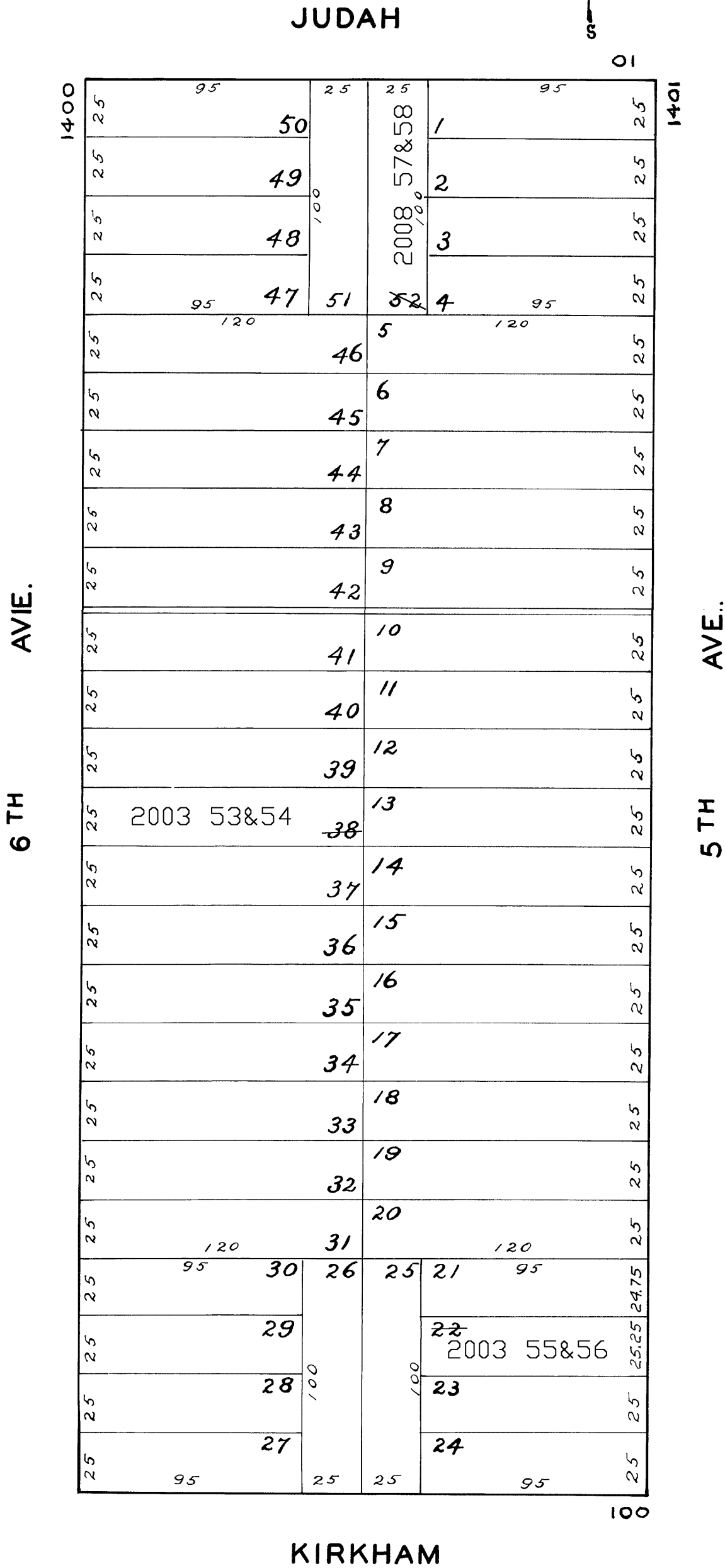
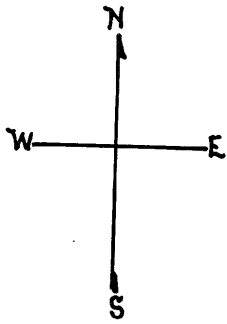


lot38 into lots 53&54 for 2003 roll
lot22 into lots55&56 for 2003 roll
lot52 into lots57&58 for 2008 roll

Revised 2003
Revised 2008



1489 5th Ave.

LOT	UNIT	% COMM. AREA
55	1	41.63
56	2	58.37

1450-1452 6TH AVE.

LOT	UNIT	% COMM. AREA
53	1	48.92
54	2	51.08

25-27 JUDAH ST.

LOT	UNIT
57	25
58	27