

© COPYRIGHT SAN FRANCISCO
CITY & COUNTY ASSESSOR 1995

lot41 into lots82&83 for 2003 roll
street name changed From LA PLAYA to GREAT HIGHWAY (date passed by the Board 11/25/2011- file number 110968)

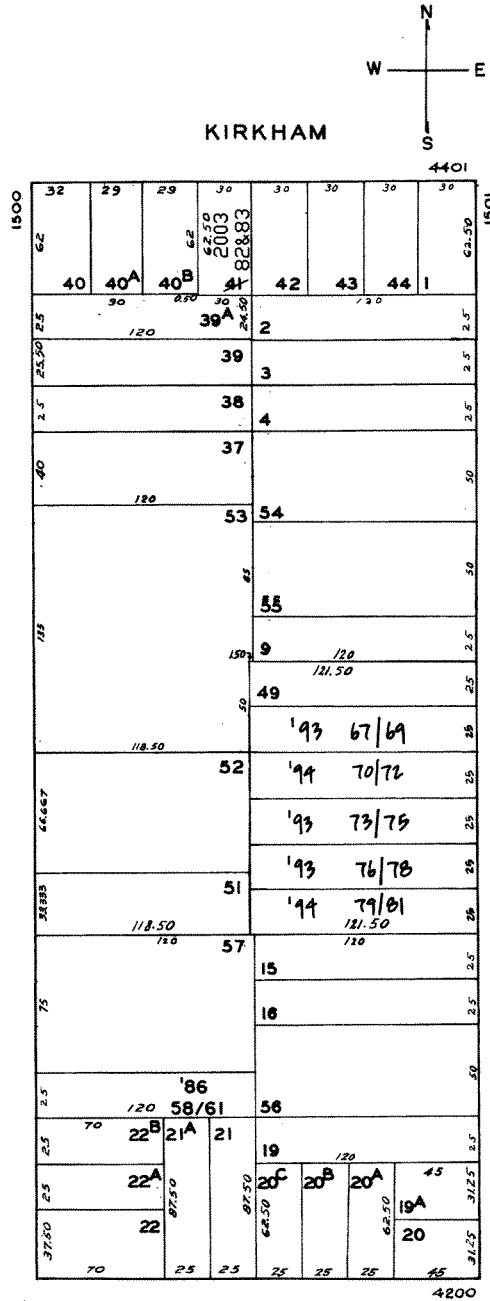
1894

SUNSET BLK 816
REVISED 1959
REVISED '60
" '61
REVISED '62
REVISED '64
REVISED '65
" '66
" '73
" '86
" '89
" '93
" '94
Revised 2003

LOTS MERGED
LOTS 33/36 INTO LOTS 1944
" 104 " 10 46
" 12/19 " 11 " 46
" 40A " 40 "49"

4429-4431 KIRKHAM ST.
A CONDOMINIUM
LOT UNIT % COMM. AREA
82 4429 53
83 4431 47

GREAT HIGHWAY LA PLAYA



1951 48TH AVE
A CONDOMINIUM

LOT	UNIT	% COMM. AREA
70	1	24.38
71	2	29.17
72	3	50.45

1947 - 48TH AVE.
A CONDOMINIUM

LOT	UNIT	% COMM. AREA
67	1	24.31
68	2	29.24
69	3	50.45

1580 LA PLAYA
A CONDOMINIUM

LOT	UNIT	% COMM. AREA
58	1	20.33
59	2	16.23
60	3	34.20
61	4	29.24

1963 48TH AVE.
A CONDOMINIUM

LOT	UNIT	% COMM. AREA
79	1	24.52
80	2	29.03
81	3	50.45

1961 - 48TH AVE.
A CONDOMINIUM

LOT	UNIT	% COMM. AREA
76	1	24.31
77	2	29.24
78	3	50.45

1957 - 48TH AVE.
A CONDOMINIUM

LOT	UNIT	% COMM. AREA
73	1	24.38
74	2	29.17
75	3	50.45