

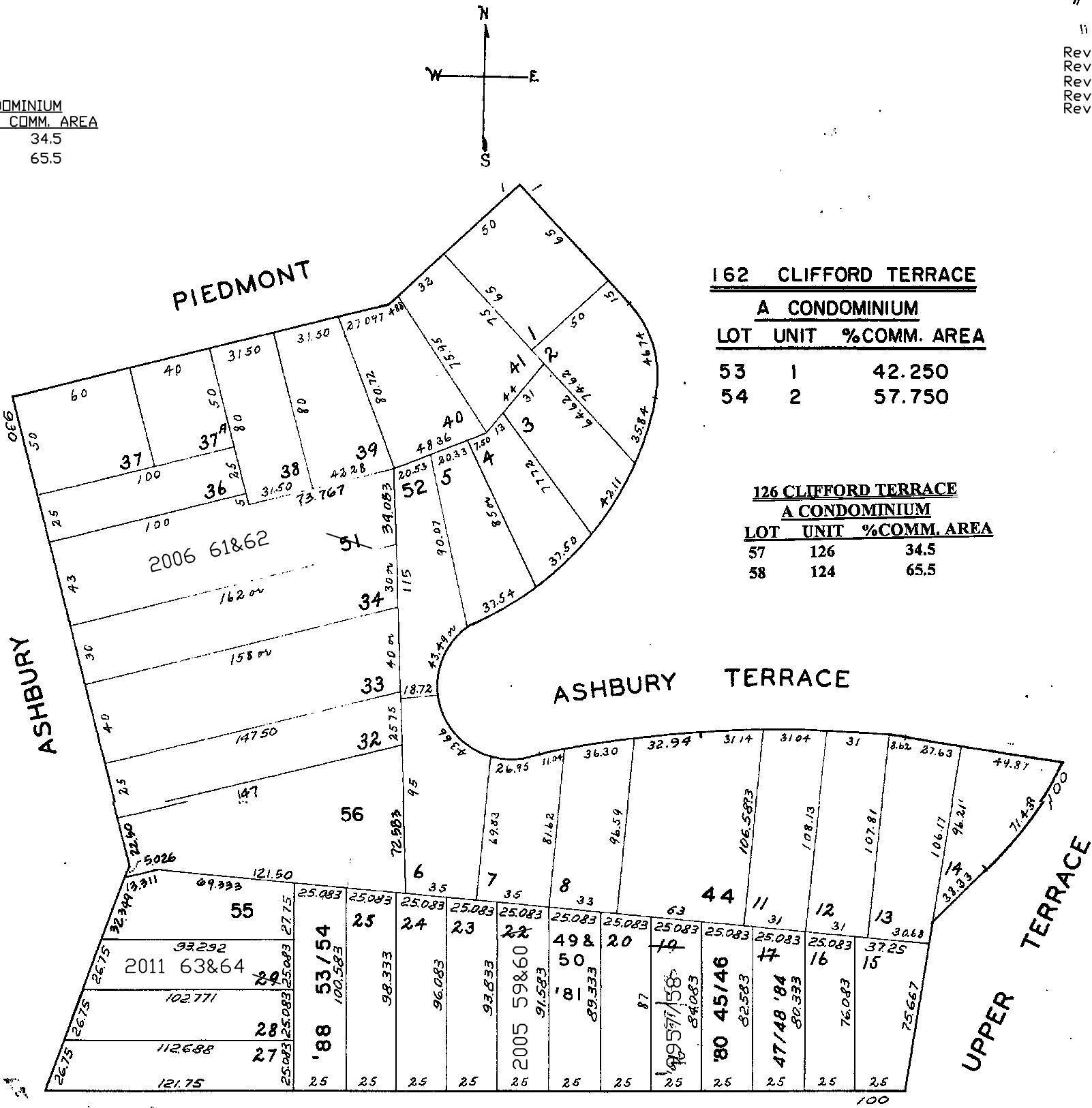
LYON & HOAG SUB. ASHBURY 1
W. A. BLK. 660 & PARK BLK. TR. 6 BLK. Z

18 into 45/46 1980
21 49/50 1981
17 47/48 1984
lot 19 into lots 57/58 for 1999 roll
lot 22 into lots 59&60 for 2005 roll
lot 51 into lots 61&62 for 2006 roll
lot 23 into lots 50&51 for 2008 roll
lot 23 into lots 50&51 for 2009 roll
lot 29 into lots 63&64 for 2011 roll

© COPYRIGHT SAN FRANCISCO
CITY & COUNTY ASSESSOR 1995

REVISED '80
REVISED '73
REVISED '80
" '81
" '84
" '86
" '88
" '89
" '96
Revised '99
Revised 2005
Revised 2006
Revised 2009
Revised 2011

| A CONDOMINIUM | | |
|---------------|------|--------------|
| LOT | UNIT | % COMM. AREA |
| 57 | 126 | 34.5 |
| 58 | 124 | 65.5 |



| 162 CLIFFORD TERRACE | | |
|----------------------|------|--------------|
| A CONDOMINIUM | | |
| LOT | UNIT | % COMM. AREA |
| 53 | 1 | 42.250 |
| 54 | 2 | 57.750 |

| 126 CLIFFORD TERRACE | | |
|----------------------|------|--------------|
| A CONDOMINIUM | | |
| LOT | UNIT | % COMM. AREA |
| 57 | 126 | 34.5 |
| 58 | 124 | 65.5 |

| 952-954 ASHBURY ST. | | |
|---------------------|------|--------------|
| A CONDOMINIUM | | |
| LOT | UNIT | % COMM. AREA |
| 61 | 952 | 90 |
| 62 | 954 | 10 |

| 142-144 CLIFFORD TERRACE | | |
|--------------------------|------|--------------|
| A CONDOMINIUM | | |
| LOT | UNIT | % COMM. AREA |
| 59 | 142 | 80 |
| 60 | 144 | 20 |

CLIFFORD TERRACE

| 112-114 CLIFFORD TERRACE | | |
|--------------------------|------|--------------|
| A CONDOMINIUM | | |
| LOT | UNIT | % COMM. AREA |
| 47 | 112 | 63 |
| 48 | 114 | 37 |

| 136-138 CLIFFORD TER. | | |
|-----------------------|------|---------------|
| A CONDOMINIUM | | |
| LOT | UNIT | % COMMON AREA |
| 49 | 136 | 50.087 |
| 50 | 138 | 49.913 |

| 116-118 CLIFFORD TERRACE | | |
|--------------------------|----------|---------------|
| A CONDOMINIUM | | |
| LOT NO. | UNIT NO. | % COMMON AREA |
| 45 | 118 | 33.33 |
| 46 | 116 | 66.67 |

LOTS MERGED

LOTS 10/11 12/13 OF 19 - 1985

Lot 23 into lots 50 & 51 for 2009 roll

26174

FLINT TR. HD. ASSN. BLDG 4
LYON & HOAG SUB. ASHBURY I

REVISED '61
REVISED '73
REVISED 2009

