

ASSESSOR-RECORDER'S OFFICE

© COPYRIGHT SAN FRANCISCO
CITY & COUNTY ASSESSOR 1995

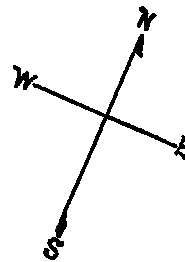
2621

FLINT TR. HD. ASSN. BLK. II

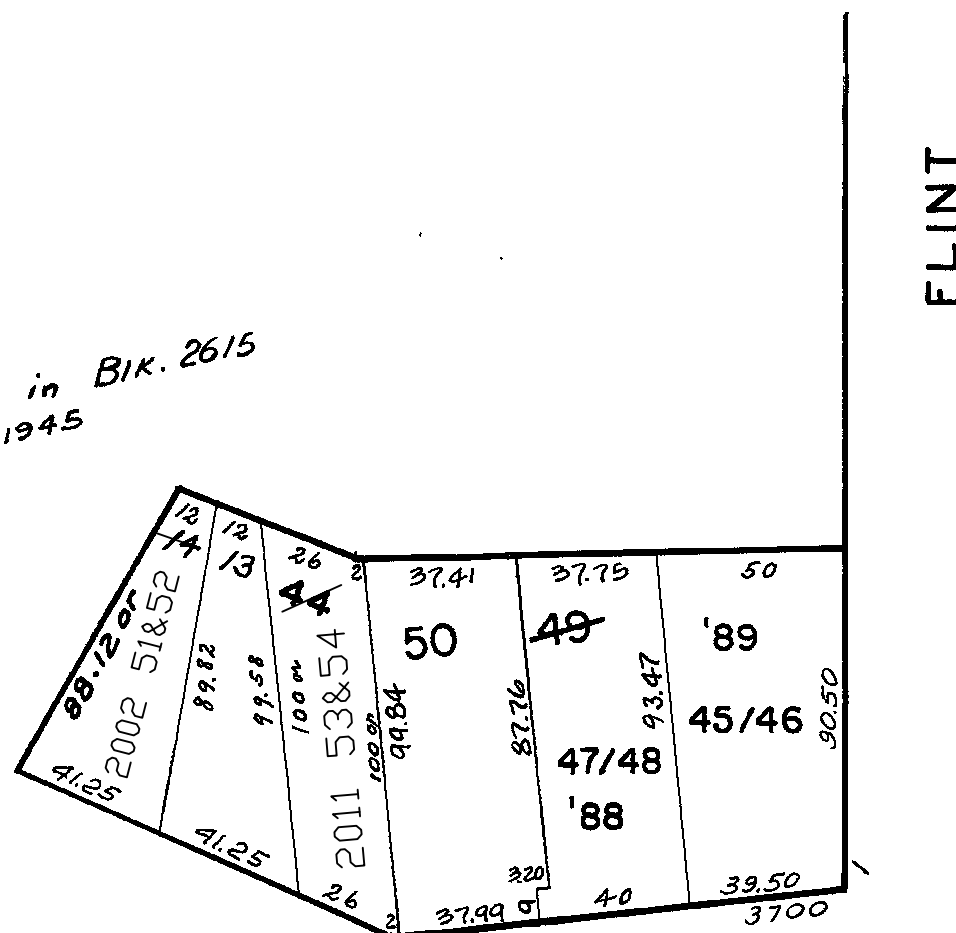
REVISED '62
" '88
" '89
Revised 2002
Revised 2011

LOTS MERGED			
LOTS	INTO LOT		
2/8, 15/42	1	"41"	
1	BLK 2615	"43"	

lot14 into lots51&52 for 2002 roll
lot44 into lots53&54 for 2011 roll



Assessed in Blk. 2615
1945



3810-3814 16TH ST.			
A CONDOMINIUM			
LOT	UNIT	% COMM. AREA	
51	3810	25.00	
52	3814	75.00	

LOT	UNIT	% COMM. AREA	CONDOMINIUMS
47	3790	47.23	3790-3792 16TH ST
48	3792	52.77	

3786-3788 16TH ST.

A CONDOMINIUM			
LOT	UNIT	% COMM. AREA	
45	3786	47	
46	3788	53	