

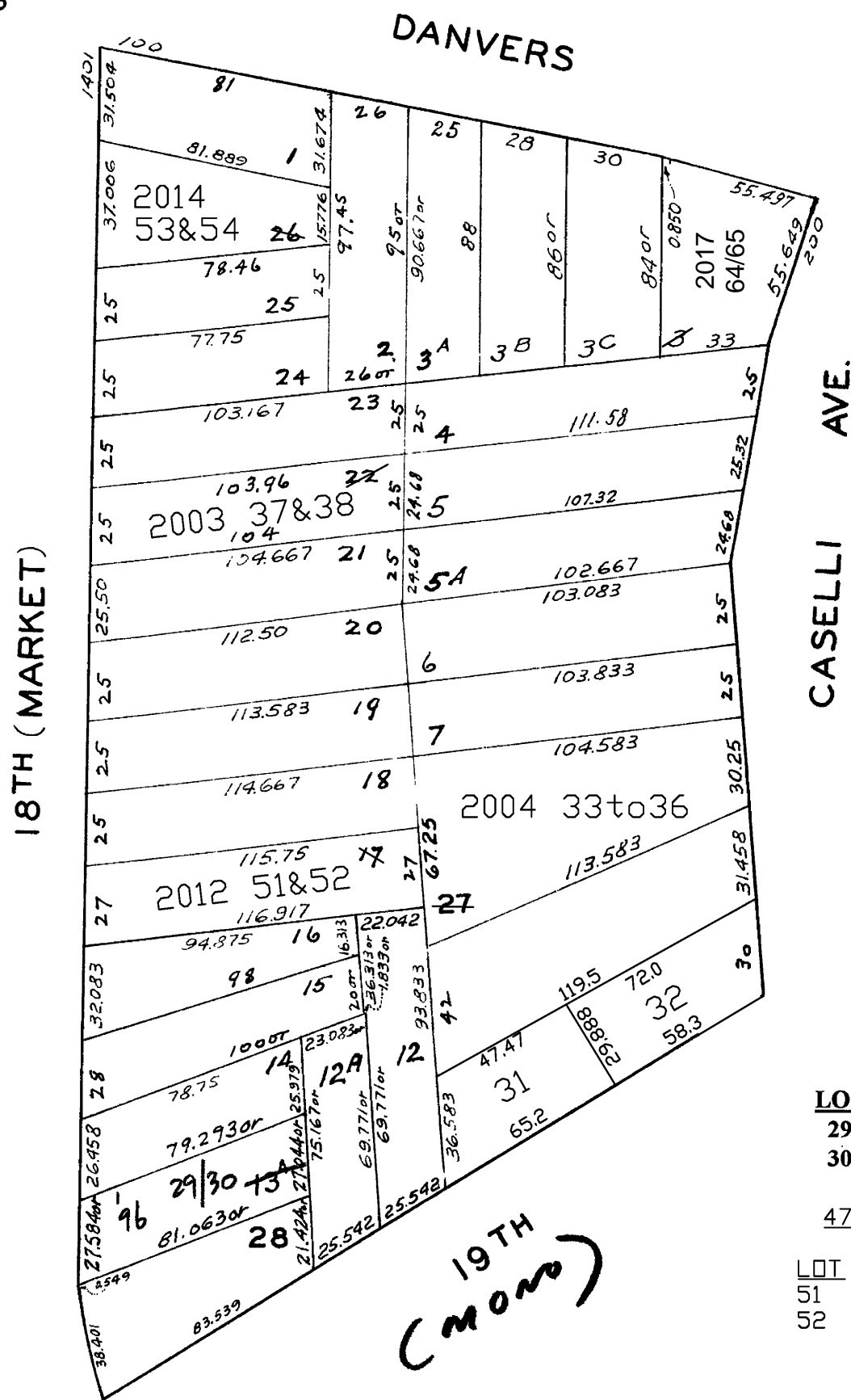
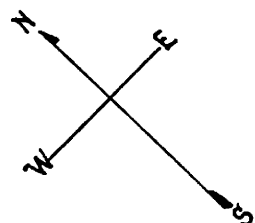
LOTS MERGED  
Lot 3<sup>D</sup> INTO St. - 1955  
lot11 into lots31&32 for 2002 roll  
lot22 into lots37&38 for 2003 roll  
lot27 into lots33/36 for 2004 roll  
lot17 into lots51&52 for 2012 roll  
lot26 into lots53&54 for 2014 roll  
Lot 3 into lots 64 & 65 for 2017 roll

MARKET ST. HD. ASSN. BLK.3  
MT. SPRING PROP. BLK.3

REVISED '58  
REVISED '60  
" '64

" '96  
Revised 2002  
Revised 2003  
Revised 2004  
Revised 2012  
Revised 2014  
REVISED 2017

© COPYRIGHT SAN FRANCISCO  
CITY & COUNTY ASSESSOR 1995



4733 18TH ST.  
A CONDOMINIUM

LOT	UNIT	% COMM. AREA
37	1	43.45
38	2	56.55

246-252 CASELLI AVE.  
A CONDOMINIUM

LOT	UNIT	% COMM. AREA
33	246	24.9
34	248	24.9
35	250	25.1
36	252	25.1

4785-4787 18TH ST.  
A CONDOMINIUM

LOT	UNIT	% COMM. AREA
29	4785	49.82
30	4787	50.18

4761-4763 18TH ST.  
A CONDOMINIUM

LOT	UNIT	% COMM. AREA
51	4761	51.64
52	4763	48.36