

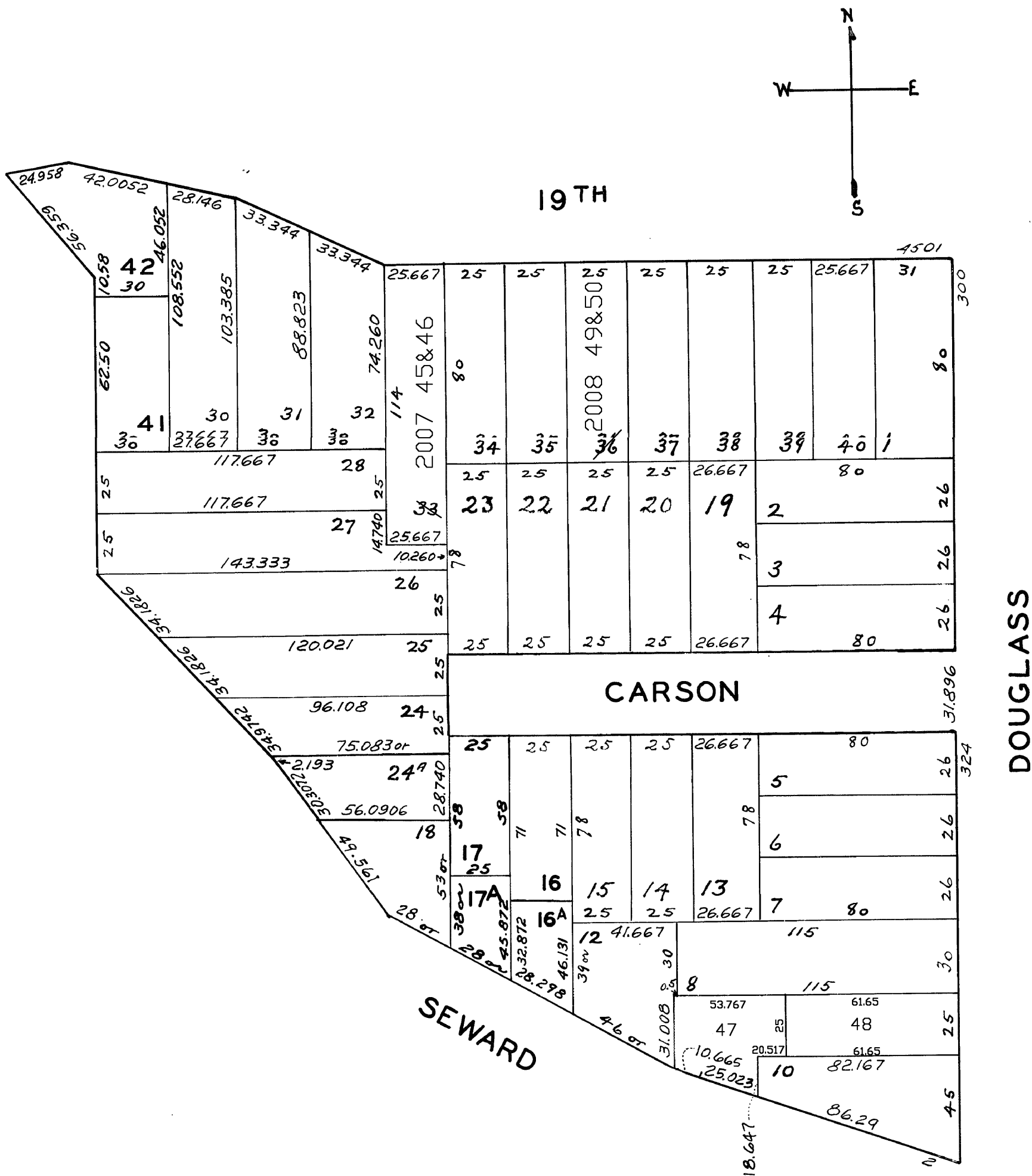
© COPYRIGHT SAN FRANCISCO  
CITY & COUNTY ASSESSOR 1995  
lot33 into lots45&46 for 2007 roll  
lot36 into lots49&50 for 2008 roll  
lot44 into lot47 for 2007 roll  
lot43 into lot48 for 2007 roll

2701

CLOVER HEIGHTS PIOCHE AND  
ROBINSON'S SUB. BLK. 15

REVISED	'67
"	'86
Revised 2007	
Revised 2008	

Lot 12A merged into lot 11-'31



4545-4547 19TH ST.			
A CONDOMINIUM			
LOT	UNIT	% COMM.	AREA
45	4545	57	
46	4547	43	

09B  
2701A  
CLOVER HEIGHTS  
REVISED 1957  
" 1959  
" 1961  
11 96

BLK. 2714

**95-97 SEWARD ST.**  
**A CONDOMINIUM**

LOT	UNIT	%COMM AREA
27	95	53.50
28	97	46.50