

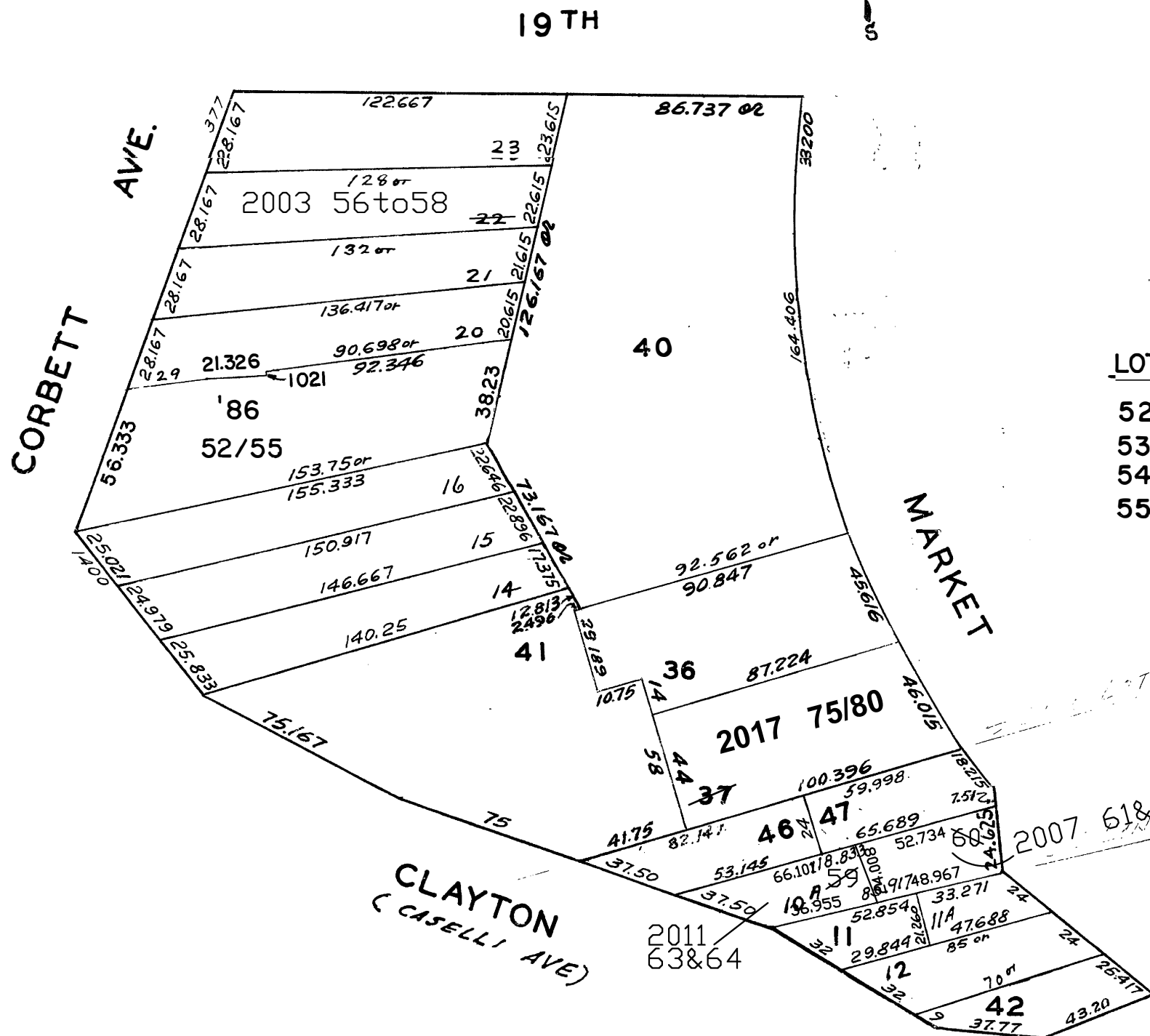
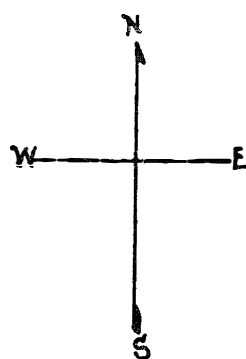
LOTS MERGED
 Lot 17 omitted - '15
 Lot 10B merged into 10A - '51
 45 48449 1984

2704
 MT. SPRING PROP. BLK. 4

© COPYRIGHT SAN FRANCISCO
 CITY & COUNTY ASSESSOR 1995

lot22 into lots56to58 for 2003 roll
 lot10A into lots59&60 for 2004 roll
 lot60 into lots61&62 for 2007 roll
 lot59 into lots63&64 for 2011 roll
 Lot 37 into lots 75 to 80 for 2017 roll

REVISED 1957
 " 1958
 " 1959
 REVISED '60
 " '62
 " '64
 " '75
 " '84
 " '86
 Revised 2003
 Revised 2004
 Revised 2007
 Revised 2011
 REVISED 2017



393 CORBETT AVE		
A CONDOMINIUM		
LOT	UNIT	% COMM. AREA
52	A	24.92
53	B	25.43
54	C	24.62
55	D	25.03

381-383 CORBETT AVE.		
A CONDOMINIUM		
LOT	UNIT	% COMM. AREA
56	381	39.9
57	381A	26.8
58	383	33.3

3264-3266 MARKET ST.		
A CONDOMINIUM		
LOT	UNIT	% COMM. AREA
61	3264	48.36
62	3266	51.64