

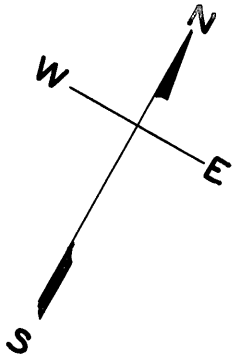
2717

SHEET 1

PIOCHE & ROBINSONS SUBS. BLK. 9
PIOCHE & ROBINSONS SUBS. BLK. 17
WENDELL TERRACE BLK. 9
HEYMAN SUB. OF SAN MIGUEL
RANCHO BLK. 9 & 17

REVISED 1957
" 1958
" 1959
REVISED '63
" '64
REVISED '70
" '71
" '73
" '74
" '76
" '84

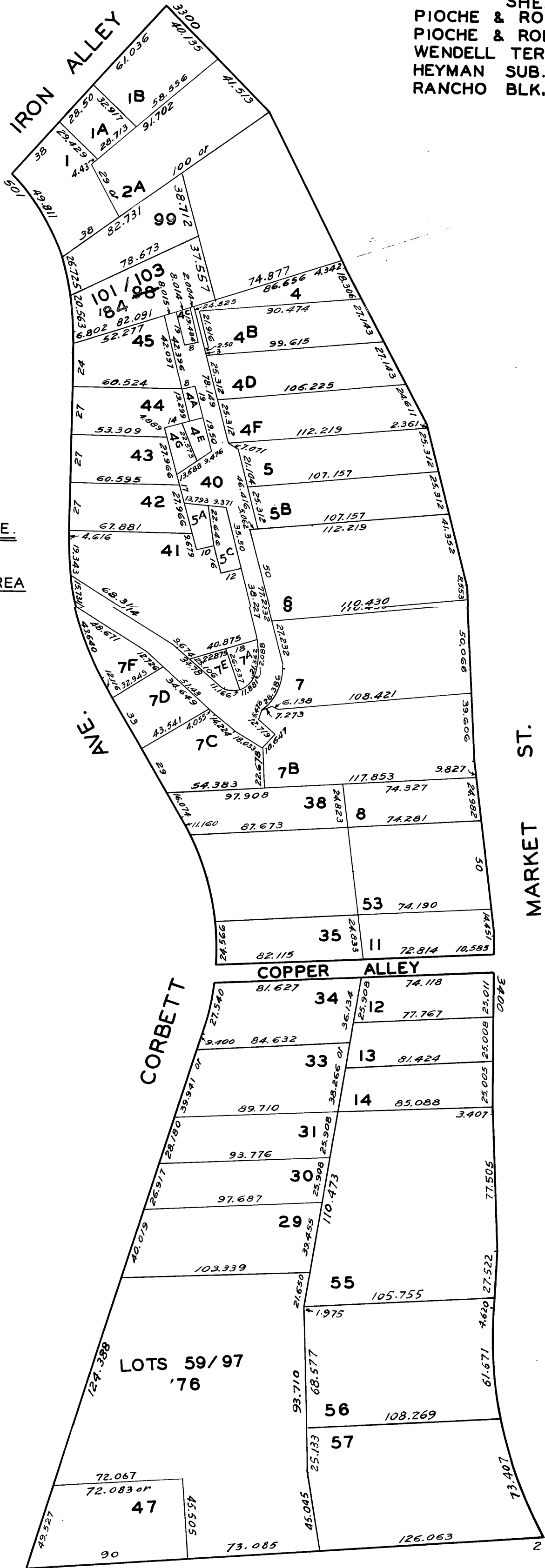
| LOTS MERGED | |
|-------------|---------------------|
| LOT 28 | INTO LOT 27-29-1942 |
| " 32 | " " 33 -1948 |
| " 7C | " " 78 -1953 |
| " 2 | " " 1 -1955 |
| " 39 | OMITTED -1957 |
| 58 | 59/97 1976 |
| 98 | 101/103 1984 |



515-17-19 CORBETT AVE.

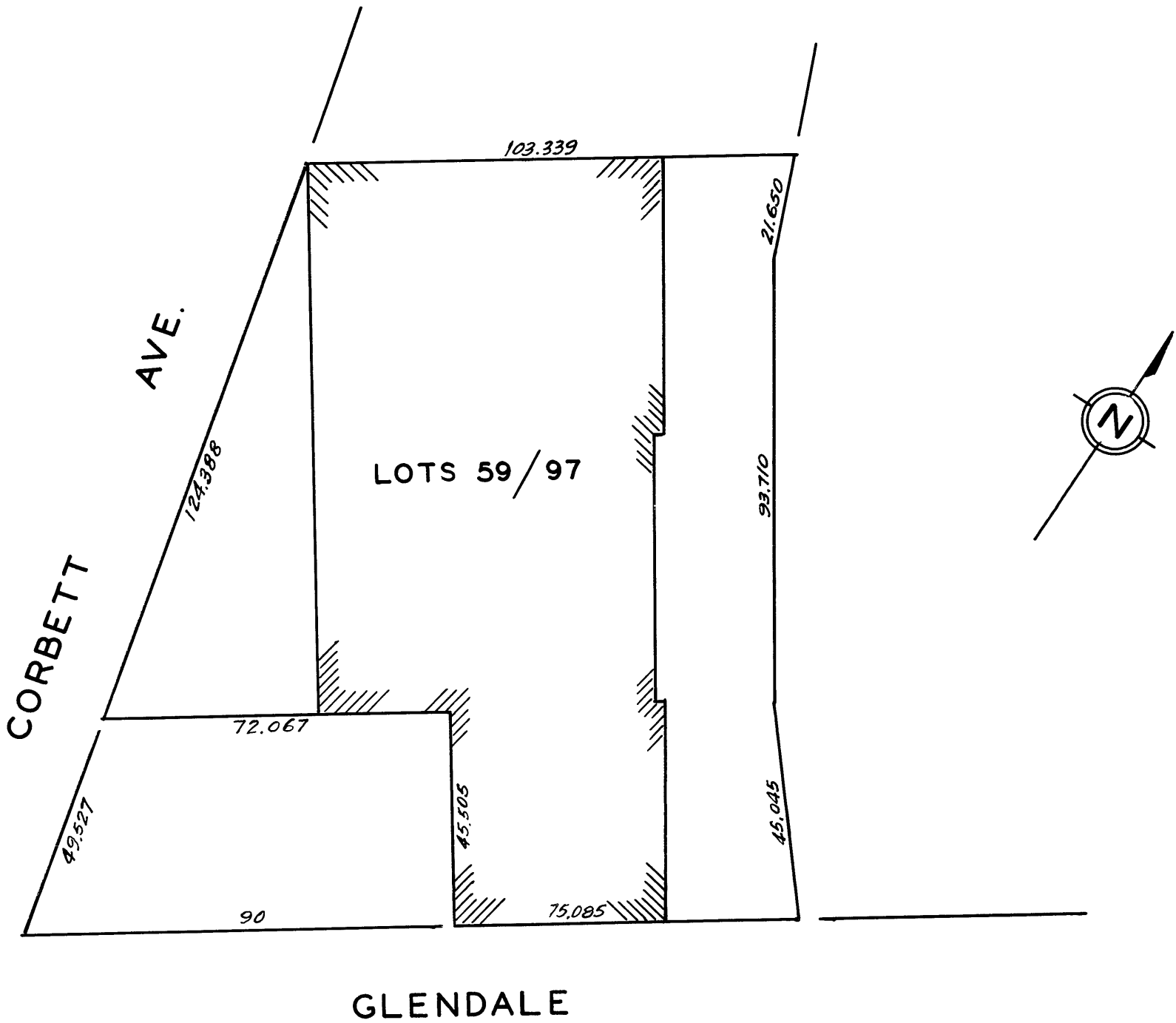
A CONDOMINIUM

| LOT | UNIT | % COMM AREA |
|-----|------|-------------|
| 101 | 515 | 23.30 |
| 102 | 517 | 34.62 |
| 103 | 519 | 42.08 |



CORBETT AVE./GLENDALE ST. CONDOMINIUM

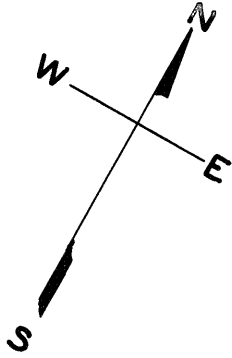
| LOT NO. | UNIT NO. | %COMMON AREA | LOT NO. | UNIT NO. | %COMMON AREA | LOT NO. | UNIT NO. | %COMMON AREA |
|---------|----------|--------------|---------|----------|--------------|---------|----------|--------------|
| 59 | A | 2.683 | 72 | 204 | 2.198 | 85 | 501 | 2.498 |
| 60 | B | 3.408 | 73 | 301 | 1.887 | 86 | 502 | 2.390 |
| 61 | 105 | 2.683 | 74 | 302 | 2.198 | 87 | 503 | 2.390 |
| 62 | 106 | 3.501 | 75 | 303 | 2.198 | 88 | 504 | 2.522 |
| 63 | 205 | 2.683 | 76 | 304 | 2.198 | 89 | 505 | 2.498 |
| 64 | 206 | 3.501 | 77 | 401 | 2.498 | 90 | 506 | 2.390 |
| 65 | 101 | 2.198 | 78 | 402 | 2.390 | 91 | 507 | 2.390 |
| 66 | 102 | 2.198 | 79 | 403 | 2.390 | 92 | 508 | 2.522 |
| 67 | 103 | 2.198 | 80 | 404 | 2.522 | 93 | 601 | 6.245 |
| 68 | 104 | 2.198 | 81 | 405 | 2.498 | 94 | 604 | 2.512 |
| 69 | 201 | 2.198 | 82 | 406 | 2.390 | 95 | 605 | 2.498 |
| 70 | 202 | 2.198 | 83 | 407 | 2.390 | 96 | 606 | 2.390 |
| 71 | 203 | 2.198 | 84 | 408 | 2.522 | 97 | 607 | 2.631 |



lot100 into lots104 & 105 for 2001 roll

| LOTS MERGED | | | |
|-------------|----------|------------|--|
| LOT 28 | INTO LOT | 27-29-1942 | |
| " 32 | " " | 33 -1948 | |
| " 7C | " " | 78 -1953 | |
| " 2 | " " | 1 -1955 | |
| " 39 | OMITTED | -1957 | |
| 58 | 59/97 | 1976 | |
| 98 | 101/103 | 1984 | |

lot105 into lots106&107 for 2001 roll
lot104 into lots108&109 for 2001 roll
lot49 into lots110&111 for 2002 roll
lot47 into lots112to115 for 2004 roll
lot41 into lots116&117 for 2008 roll



515-17-19 CORBETT AVE.

A CONDOMINIUM

LOT UNIT % COMM AREA

| | | |
|-----|-----|-------|
| 101 | 515 | 23.30 |
| 102 | 517 | 34.62 |
| 103 | 519 | 42.08 |

3324-3326 MARKET ST.

A CONDOMINIUM

| LOT | UNIT | % COMM. AREA |
|-----|------|--------------|
| 106 | 3324 | 45.18 |
| 107 | 3326 | 54.82 |

3320-3322 MARKET ST.

A CONDOMINIUM

| LOT | UNIT | % COMM. AREA |
|-----|------|--------------|
| 108 | 3320 | 46.15 |
| 109 | 3322 | 53.85 |

657 CORBETT AVE.

A CONDOMINIUM

| LOT | UNIT | % COMM. AREA |
|-----|------|--------------|
| 112 | 1 | 26.20 |
| 113 | 2 | 24.36 |
| 114 | 3 | 27.27 |
| 115 | 4 | 22.17 |

SHEET 1
PIOCHE & ROBINSONS SUBS. BLK. 9
PIOCHE & ROBINSONS SUBS. BLK. 17
WENDELL TERRACE BLK. 9
HEYMAN SUB. OF SAN MIGUEL
RANCHO BLK. 9 & 17

REVISED 1957
" 1958
" 1959
REVISED '63
" '64
REVISED '70
" '71
" '73
" '74
" '76
" '84

Revised 2001
Revised 2002
Revised 2004
Revised 2008

