

# ASSESSOR-RECORDER'S OFFICE

2719

© COPYRIGHT SAN FRANCISCO  
CITY & COUNTY ASSESSOR 1995

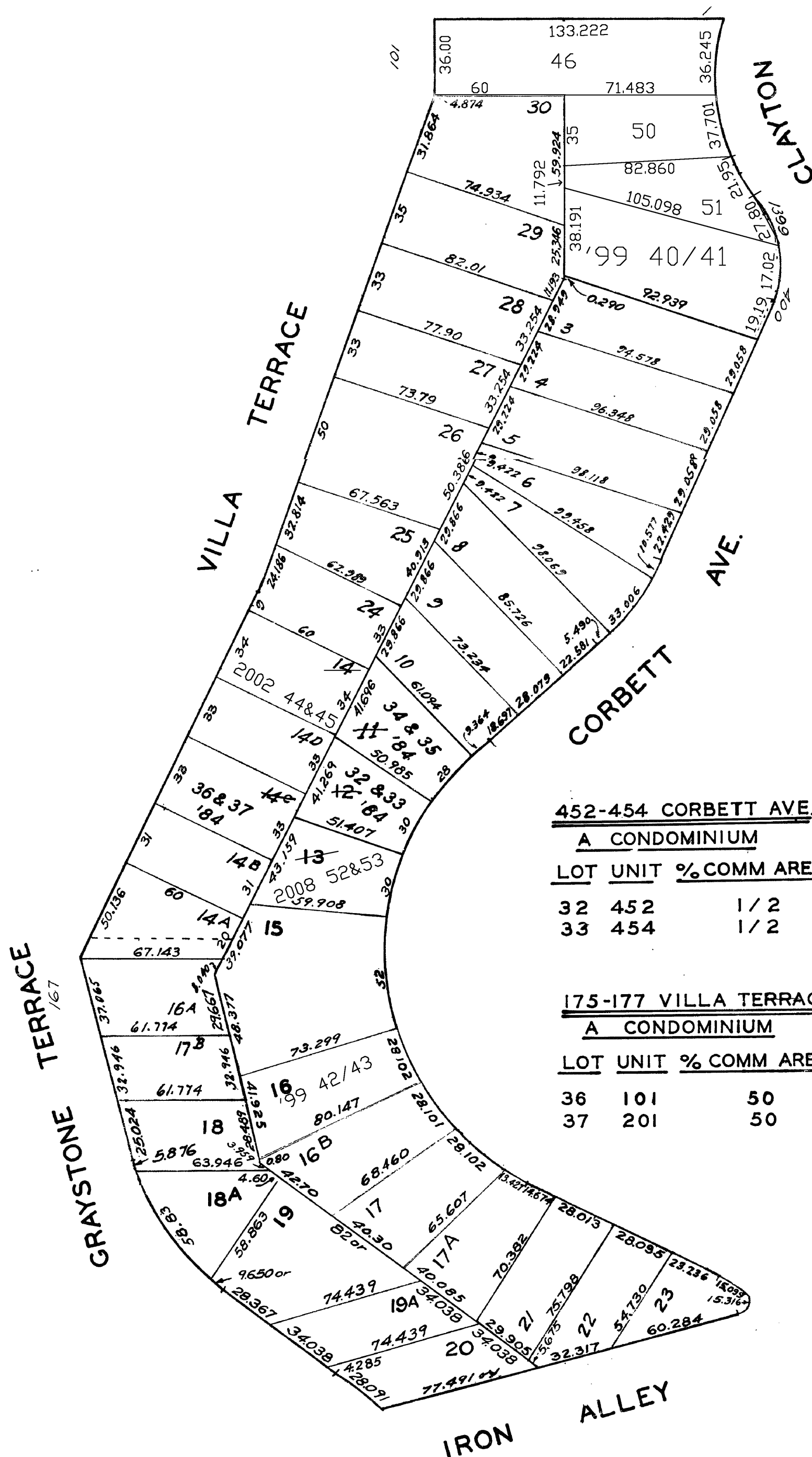
lot 1 & 2 & 31 into lots 38 & 39 for 1998 roll  
lot 16 into lots 42/43 for 1999 roll  
lot 39 into lots 40/41 for 1999 roll  
lot 14 into lots 44&45 for 2002 roll  
lot 38 into lots 46&47 for 2002 roll  
lot 13 into lots 52&53 for 2008 roll  
lot 47 into lots 50&51 for 2009 roll

TWIN PEAKS TERRACE

REVISED 1984

Revised '98  
Revised '99  
Revised 2002  
Revised 2008  
Revised 2009

PEMBERTON PLACE



## LOTS MERGED

LOTS	INTO LOT
31A	37 "1940"
32A	37 "1941"
19A, 20A, 21A, 22A	11 "1942"
11	34 & 35 1984
12	32 & 33 "
14C	36 & 37 "

## 468-470 CORBETT AVE. A CONDOMINIUM

LOT	UNIT	% COMM. AREA
42	468	50
43	470	50

## 400 CORBETT AVE. A CONDOMINIUM

LOT	UNIT	% COMM. AREA
40	1	48.6
41	2	51.4

## 163-165 VILLA TERRACE A CONDOMINIUM

LOT	UNIT	% COMM. AREA
40	163	29.00
41	165	71.00

## 452-454 CORBETT AVE.

### A CONDOMINIUM

LOT	UNIT	% COMM. AREA
32	452	1/2
33	454	1/2

## 448-450 CORBETT AVE.

### A CONDOMINIUM

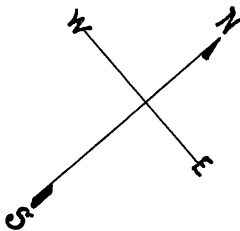
LOT	UNIT	% COMM. AREA
34	448	1/2
35	450	1/2

## 175-177 VILLA TERRACE

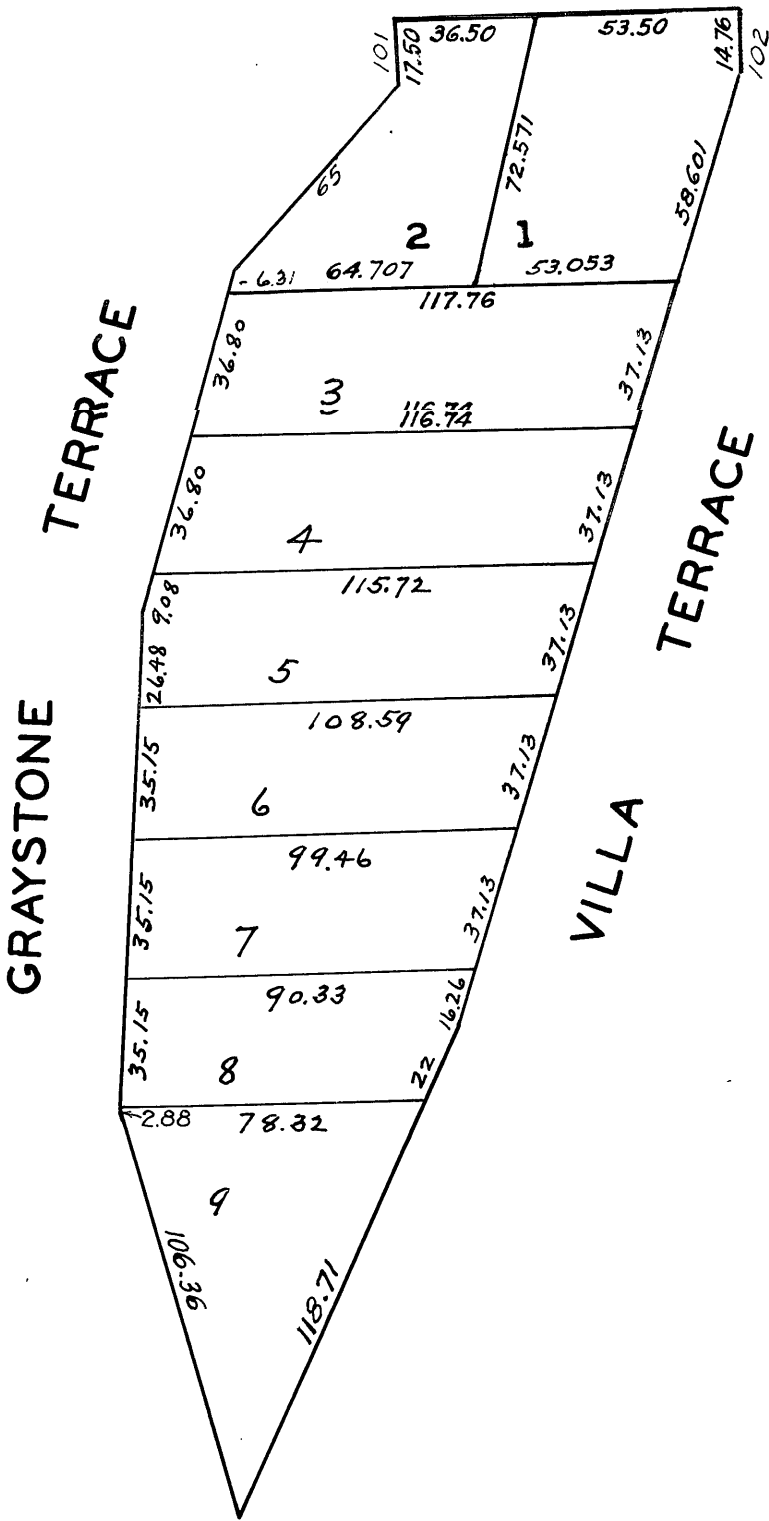
### A CONDOMINIUM

LOT	UNIT	% COMM. AREA
36	101	50
37	201	50

LOTS MERGED			
LOTS	INTO LOT		
Lot 1A 2A	" 1	1943	
" 1B	" 2	1953	
" 10	" 9	1955	



PEMBERTON PLACE



© COPYRIGHT SAN FRANCISCO  
CITY & COUNTY ASSESSOR 1995

lot58 into lots64&65 for 2002 roll  
lot59 into lots66&67 for 2002 roll  
lot60 into lots68&69 for 2002 roll

2719B

PART TWIN PEAKS TERRACE

REVISED 1950

REVISED '60

REVISED '63

" '77

" '81

" '82

" '83

" '84

" '92

" '94

Revised 2002

LOTS MERGED

LOTS	INTO LOT	19--
18 TO 23	16	1944
10/13 & 21/24	4/9	'51'
26 B	26 A	'56'

184 GRAYSTONE TERRACE

A CONDOMINIUM

LOT	UNIT	% COMM. AREA
66	A	48.45
67	B	51.55

188 GRAYSTONE TERRACE

A CONDOMINIUM

LOT	UNIT	% COMM. AREA
64	A	48.45
65	B	51.55

192 GRAYSTONE TERRACE

A CONDOMINIUM

LOT	UNIT	% COMM. AREA
68	A	47.91
69	B	52.09

180-182 GRAYSTONE TERRACE

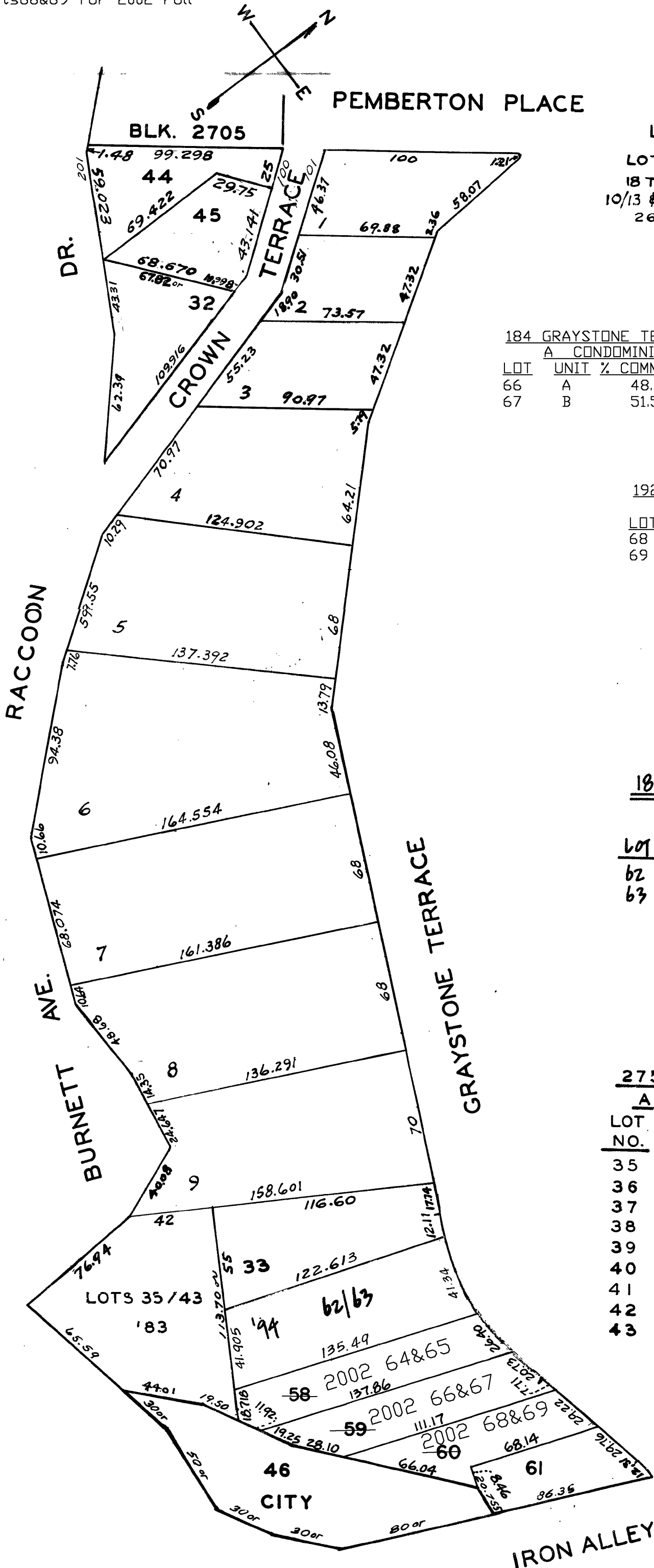
A CONDOMINIUM

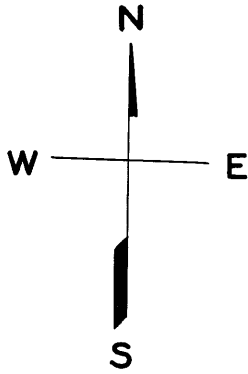
LOT	UNIT	% COMM. AREA
62	A	50
63	B	50

275 BURNETT AVE.

A CONDOMINIUM

LOT NO.	UNIT NO.	% COMMON AREA
35	6	8.660
36	5	8.723
37	4	8.723
38	3	8.723
39	2	8.723
40	1	8.660
41	8	12.866
42	7	12.866
43	9	22.056





scale: 1" = 200'

2719C

TWIN PEAKS TERRACE

REVISED	1957
"	1958
"	1959
"	'63
"	'67
"	'68
"	'73
"	'78
"	'82

