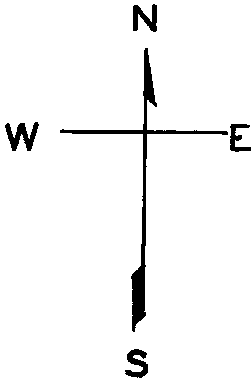


lot21 into lots46&47 for 2005 roll
lot37 into lots44&45 for 2006 roll
lot20C into lots48&49 for 2010 roll

2770



HORNERS ADDN. BLK. 189

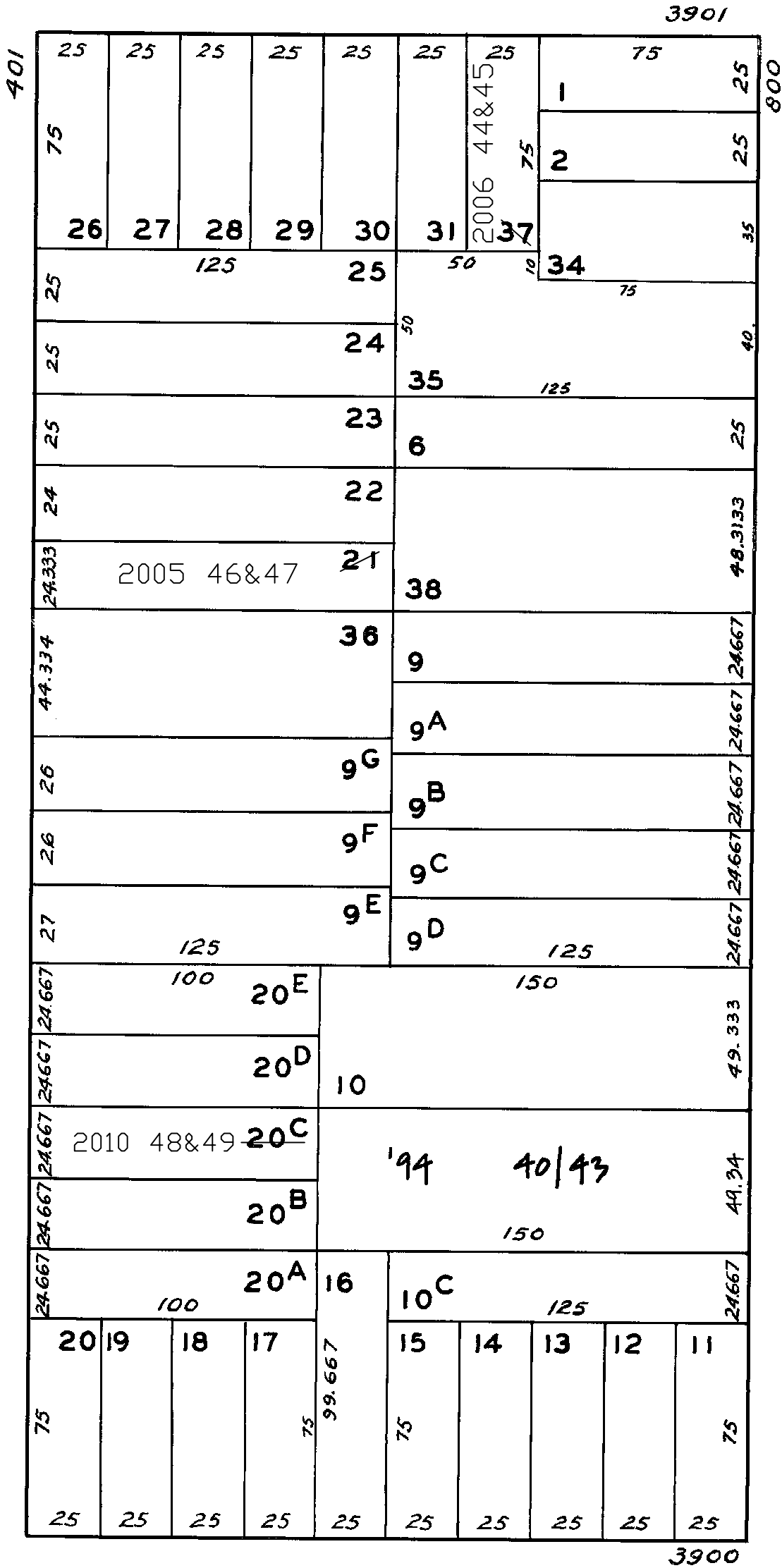
REVISED '66
REVISED '73
REVISED '74
REVISED '79
" '93
" '94

Revised 2005
Revised 2006
Revised 2010

21 ST

COLLINGWOOD

CASTRO



876 - 880 CASTRO ST.

A CONDOMINIUM

LOT	UNIT	% COMM. AREA
40	876A	32.95
41	876B	17.49
42	880A	29.88
43	880B	24.08

3919-3921 21ST ST.

A CONDOMINIUM

LOT	UNIT	% COMM. AREA
44	3919	87
45	3921	13

433 COLLINGWOOD ST.

A CONDOMINIUM

LOT	UNIT	% COMM. AREA
46	433B	44.7
47	433A	55.3