

2799

LOTS MERGED

LOT 5 INTO LOT 22 - 1940
1 49/52 1981

lot 7 into lots 75/77 for 2000 roll
lot 44 into lots 53/58 for 2000 roll
lot 8 into lots 81 & 82 fpr 200 roll
lot6 into lots78/80 for 2001 roll
lot13 into lots83to85 for 2008 roll
lot45 into lots72to74 for 2009 roll

HEYMAN
TR. LOTS 270-306

REVISED '58
REVISED '60
" '62
REVISED '63
" '68
REVISED '70
REVISED '79
" '81
" '86
" '89

Revised 2000
Revised 2001
Revised 2008
Revised 2009

ETT AVE

MINIUM
COMM. AREA

16.362
16.971
16.362
16.971
16.362
16.972

916 CORBETT AVE.

A CONDOMINIUM
UNIT % COMM. AREA

1	30.4
2	35.0
3	34.6

918 CORBETT AVE.

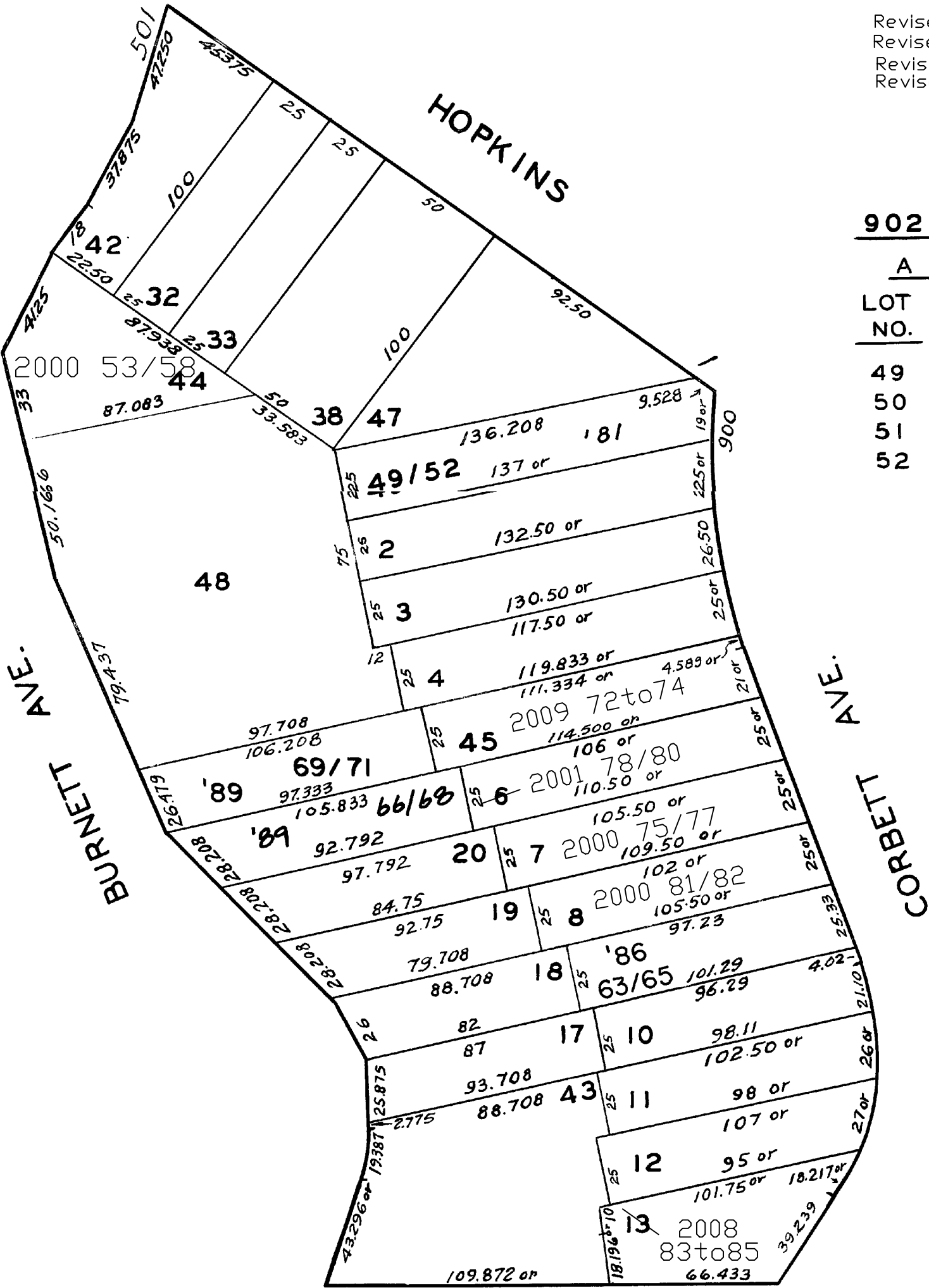
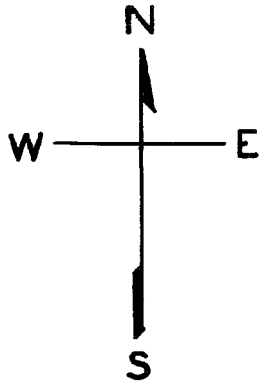
A CONDOMINIUM
LOT UNIT % COMM. AREA

81	1	51
82	2	49

912 CORBETT AVE.

A CONDOMINIUM
LOT UNIT % COMM. AREA

78	1	30.60
79	2	35.00
80	3	34.40



902 CORBETT AVE.

A CONDOMINIUM		
LOT NO.	UNIT NO.	% COMMON AREA
49	1	20.841
50	2	20.841
51	3	28.637
52	4	29.681

GOLDING LANE

924 CORBETT AVE

A CONDOMINIUM		
LOT	UNIT	% COMM. AREA
63	A	31.2192
64	B	34.3904
65	C	34.3904

559 BURNETT AVE.

A CONDOMINIUM		
LOT	UNIT	% COMM. AREA
69	100	33.333
70	200	33.333
71	300	33.334

561 BURNETT AVE.

A CONDOMINIUM		
LOT	UNIT	% COMM. AREA