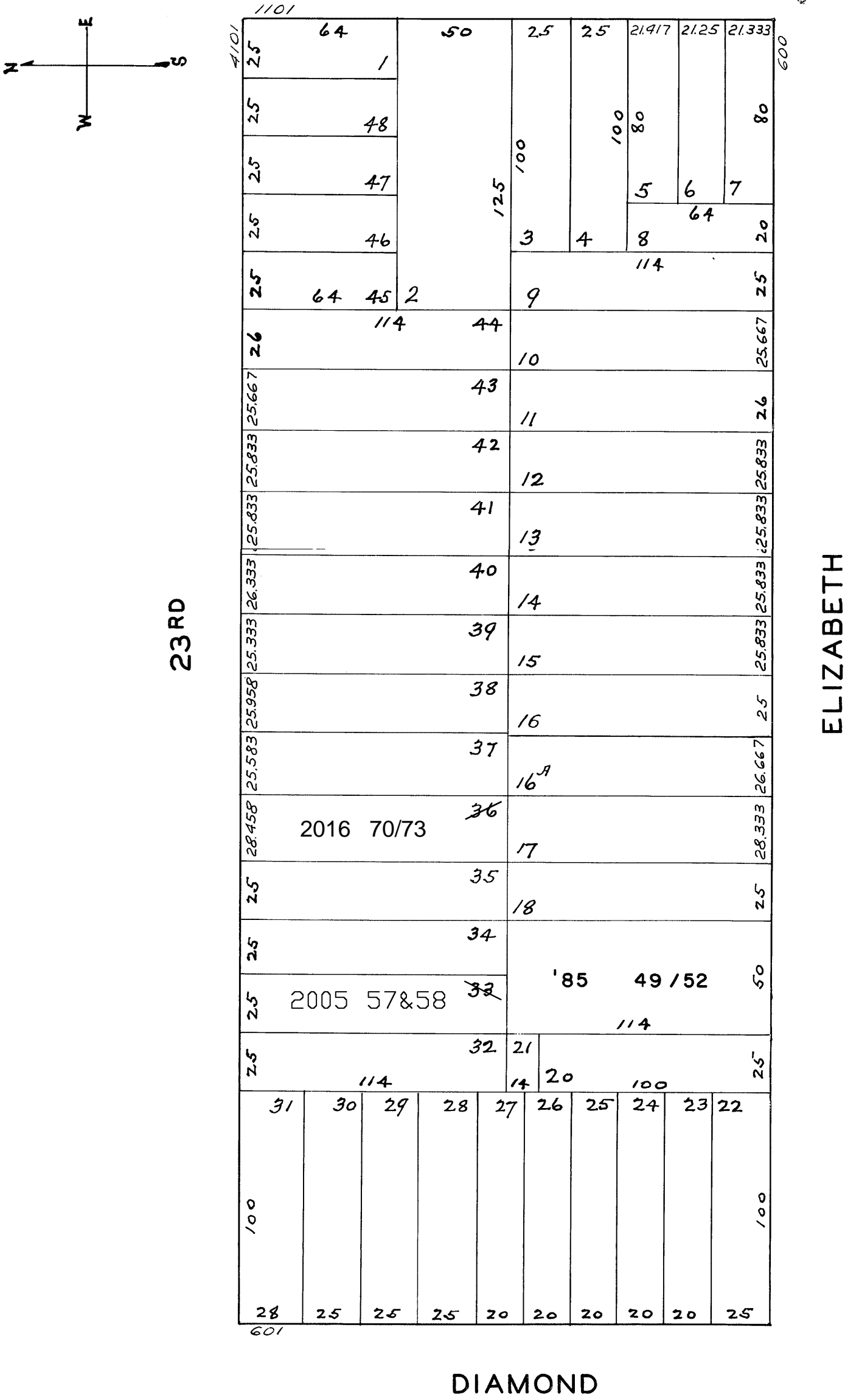


lot33 into lots57&58 for 2005 roll  
Lot 36 into lots 70 to 73 for 2016 roll

NOE GARDEN HD. UN. BLK. 8

REVISED 1985  
Revised 2005  
REVISED 2016



664 - 670 ELIZABETH ST.		
A CONDOMINIUM		
LOT NO.	UNIT NO.	% COMMON AREA
49	664	1/4
50	666	1/4
51	668	1/4
52	670	1/4

4175-4177 23RD ST.		
A CONDOMINIUM		
LOT	UNIT	% COMM. AREA
57	4175	50
58	4177	50