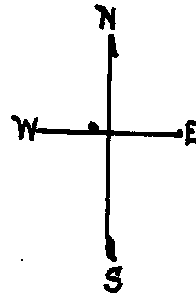


LOTS MERGED

Lots 2/3 merged into lot 1 - '51
 " 52 " " " 53/54 - '52
 lot 1 into lots 116&117 for 2006 roll

© COPYRIGHT SAN FRANCISCO
 CITY & COUNTY ASSESSOR 1995

lots 116&117 into lots 118 to 121 for 2012 roll



3027A

(Formerly Block 3034)
 1927-28

SUNNYSIDE ADDN. NO. 1
 BLOCK 123

MIRALOMA PARK SUB. 10

REVISED '59

" '61

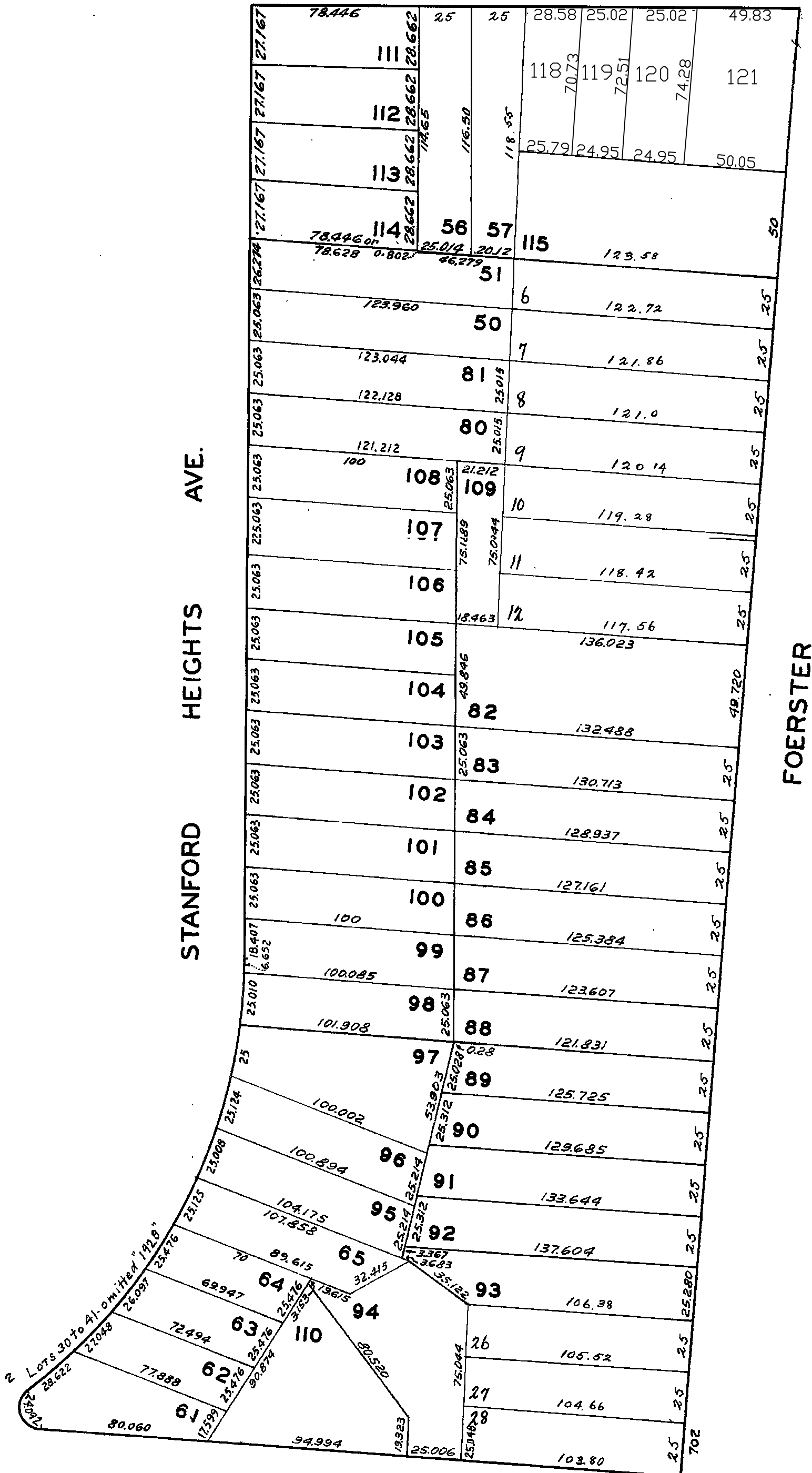
" '63

" '70

Revised 2006

Revised 2012

LOS PALMOS DR.



MELROSE

AVE.