

© COPYRIGHT SAN FRANCISCO
CITY & COUNTY ASSESSOR 1995

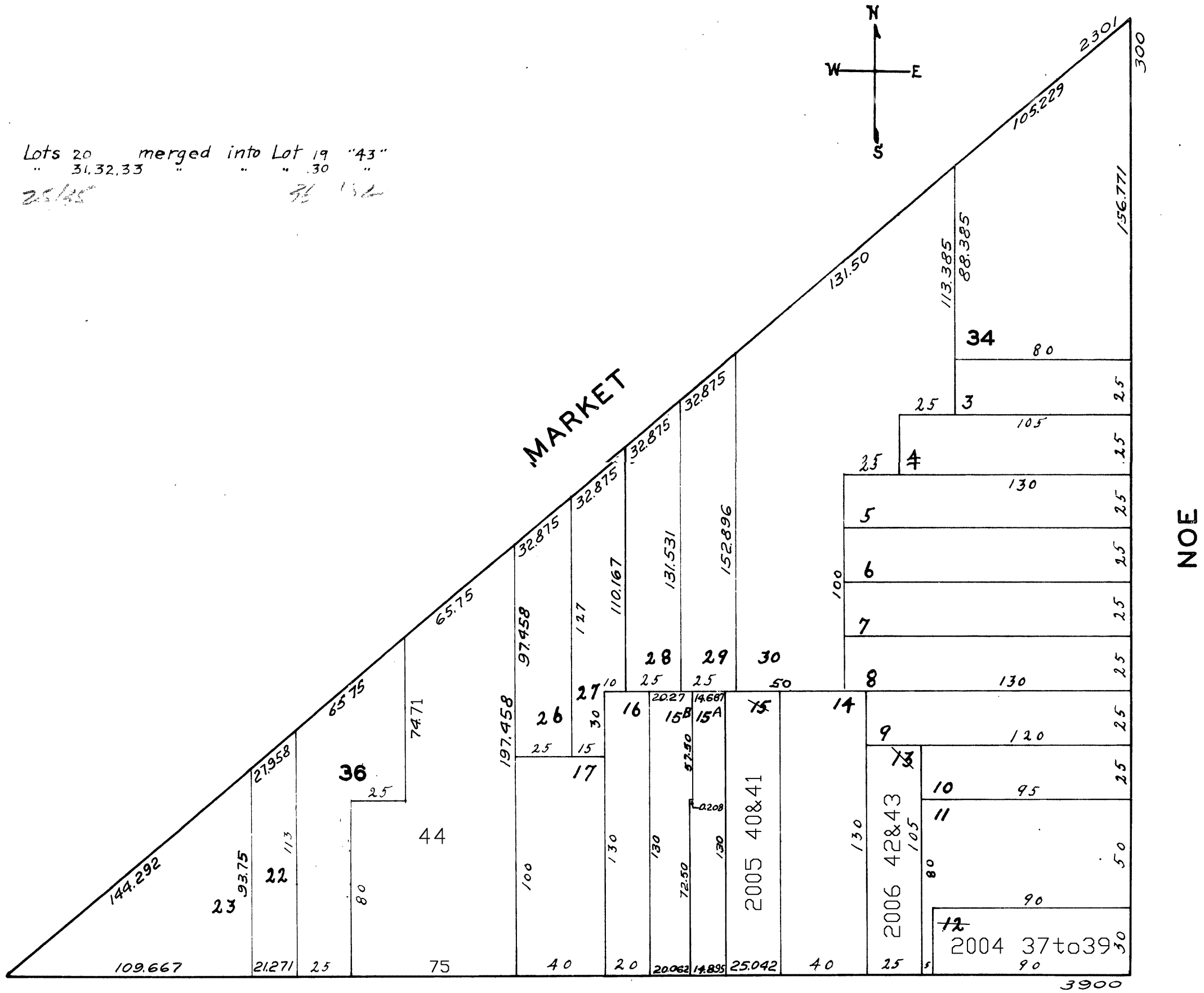
lot12 into lots37/39 for 2004 roll
lot15 into lots40&41 for 2005 roll
lot13 into lots42&43 for 2006 roll
lots18&19 into lot44 for 2006 roll

3563

MISSION BLK. 115

REVISED '62
" '64
" '82

Revised 2004
Revised 2005
Revised 2006



3918-3920 17TH ST. A CONDOMINIUM			
LOT	UNIT	% COMM.	AREA
42	3920	51	
43	3918	49	

3930-3932 17TH ST. A CONDOMINIUM			
LOT	UNIT	% COMM.	AREA
40	3930	50	
41	3932	50	

3900-3906 17TH ST.&392 NOE ST. A CONDOMINIUM			
LOT	UNIT	% COMM.	AREA
37	392	40.1	
38	3900	33.2	
39	3906	26.7	