

ASSESSOR-RECORDER'S OFFICE

© COPYRIGHT SAN FRANCISCO
CITY & COUNTY ASSESSOR 1995

3623

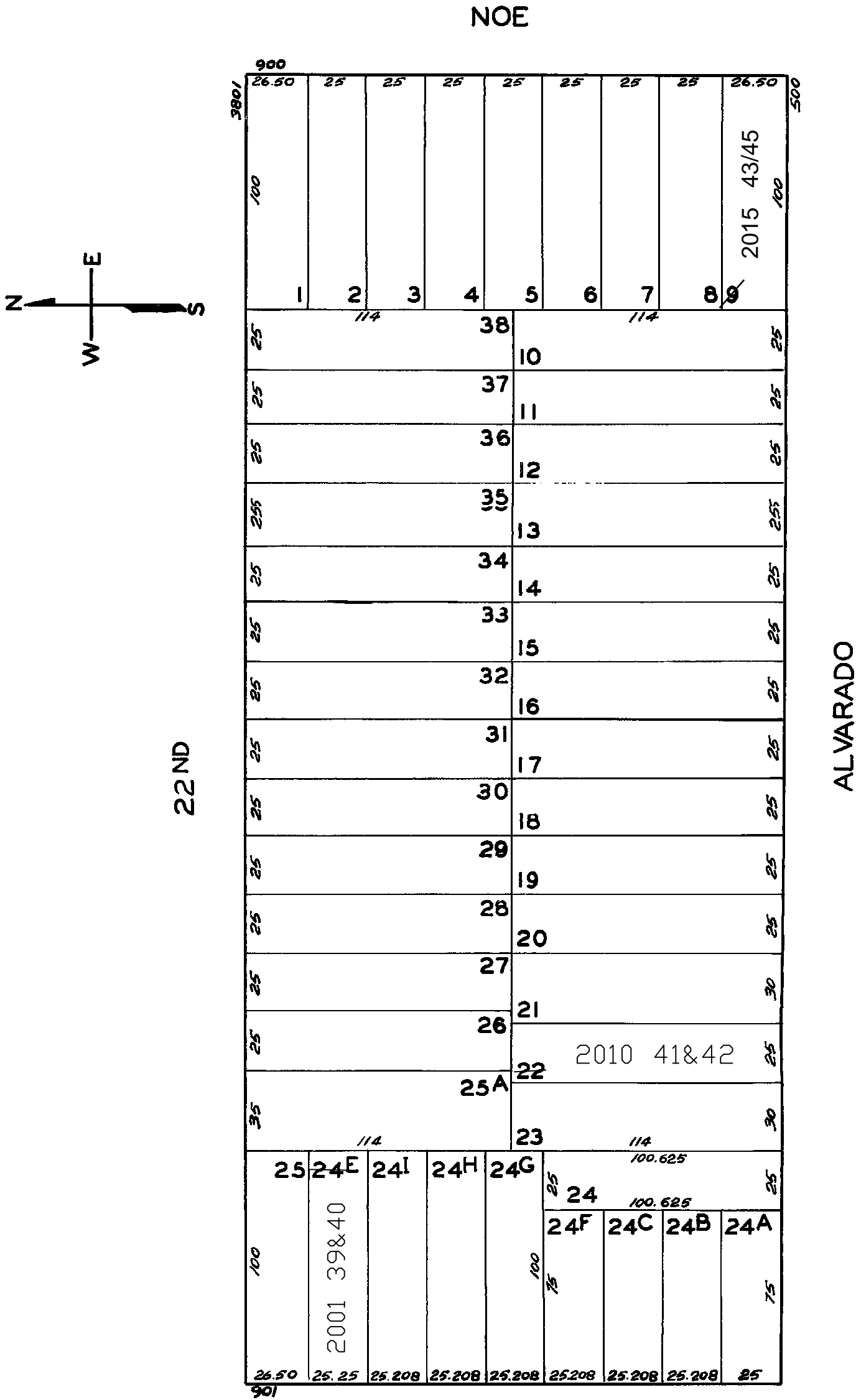
LOTS MERGED

LOT 24^D INTO LOT 24-1928

lot24E into lots39&40 for 2001 roll
lot22 into lots41&42 for 2010 roll
Lot 9 into lots 43 to 45 for 2015 roll

HORNER'S ADDITION BLK. 157

Revised 2001
Revised 2010
REVISED 2015



907-909 CASTRO ST.		
A CONDOMINIUM		
LOT	UNIT	% COMM. AREA
39	907	52.00
40	909	48.00