

ASSESSOR-RECORDER'S OFFICE

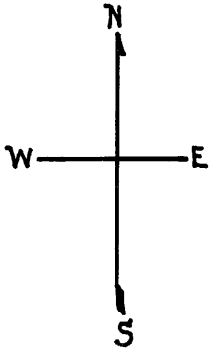
3646

HORNERS ADDN. BLK. II

© COPYRIGHT SAN FRANCISCO
CITY & COUNTY ASSESSOR 1995

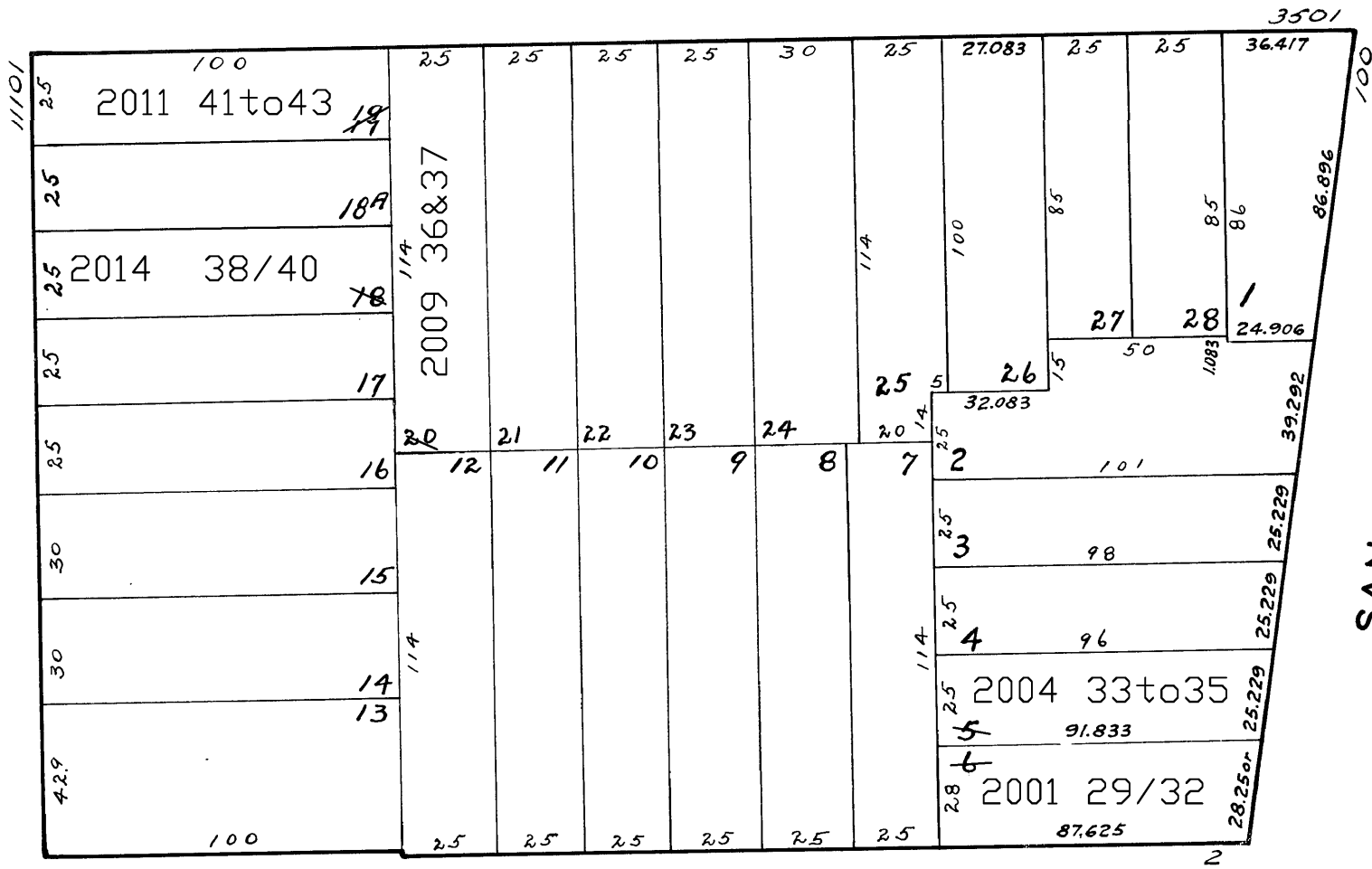
lot6 into lots29/32 for 2001 roll
lot5 into lots33/35 for 2004 roll
lot20 into lots36&37 for 2009 roll
lot19 into lots41to43 for 2011 roll
lot18 into lots38/40 for 2014 roll

Revised 2001
Revised 2004
Revised 2009
Revised 2011
Revised 2014



23RD

GUERRERO



ELIZABETH

SAN JOSE AVE.

20 ELIZABETH ST.
A CONDOMINIUM

LOT	UNIT	% COMM. AREA
29	1	21.65
30	2	21.16
31	3	28.82
32	4	28.37

108 SAN JOSE AVE.
A CONDOMINIUM

LOT	UNIT	% COMM. AREA
33	1	35.30
34	2	35.63
35	3	29.07