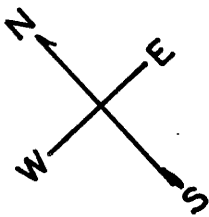


lot6 into lots144to170 for 2008 roll  
lots82to84 into lots119to143 for 2008 roll  
lot71/73 into lot240 for 2014 roll

LOTS MERGED

Lots 4-5 merged into Lot 2 "43"  
34-37-60-61  
44  
46-47-48-54-55-  
56-57  
63  
40-41-58  
30  
748  
13  
35  
43  
45  
46  
39  
17  
6  
44  
56

lot2 into lots79to112 for 2002 roll  
2 lot9 into lots113to118 for 2006 roll



© COPYRIGHT SAN FRANCISCO  
CITY & COUNTY ASSESSOR 1995

3704  
100 VARA BLK.380

REVISED '57  
Revised 2002  
Revised 2006  
Revised 2008  
Revised 2014

MARKET

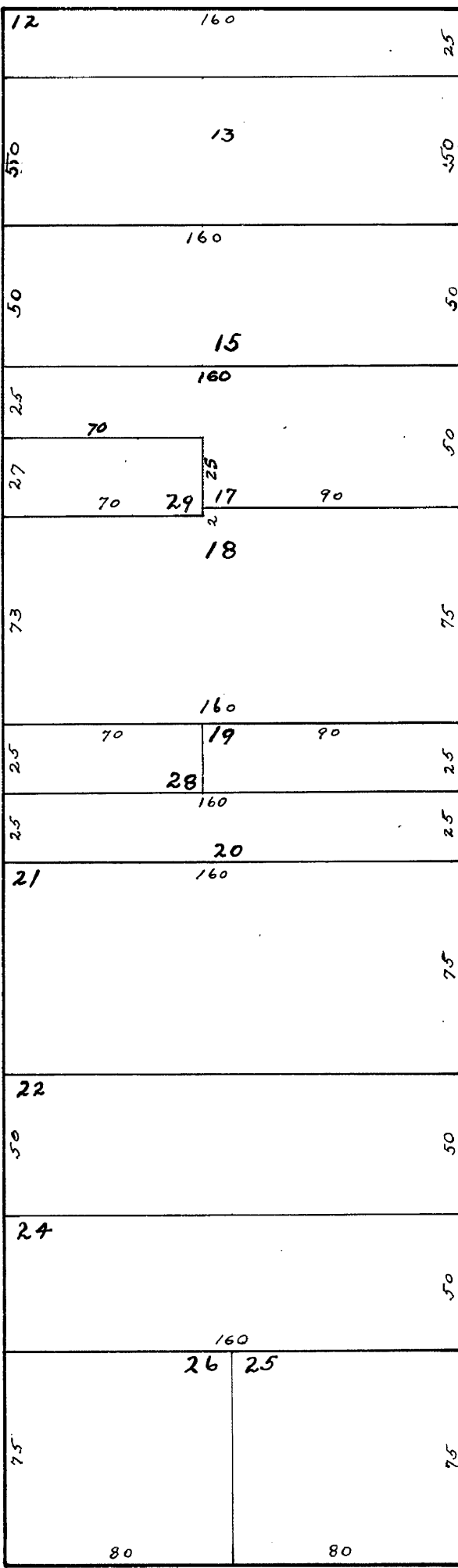
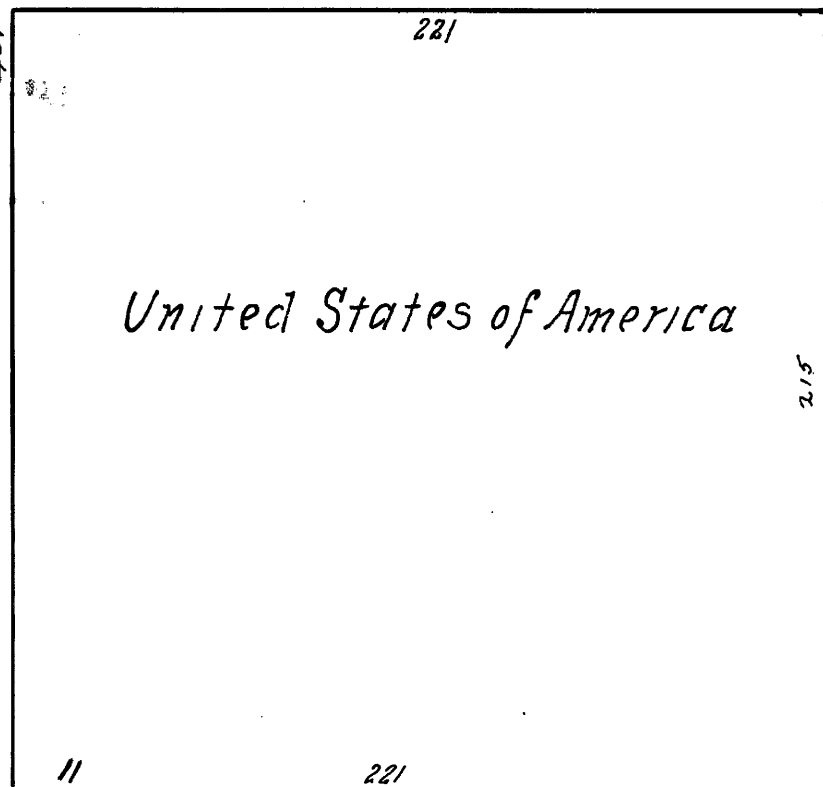
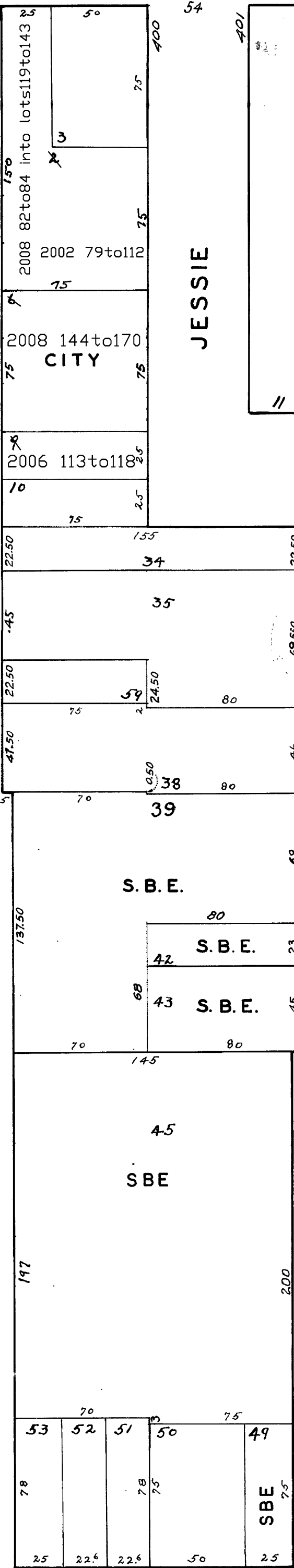
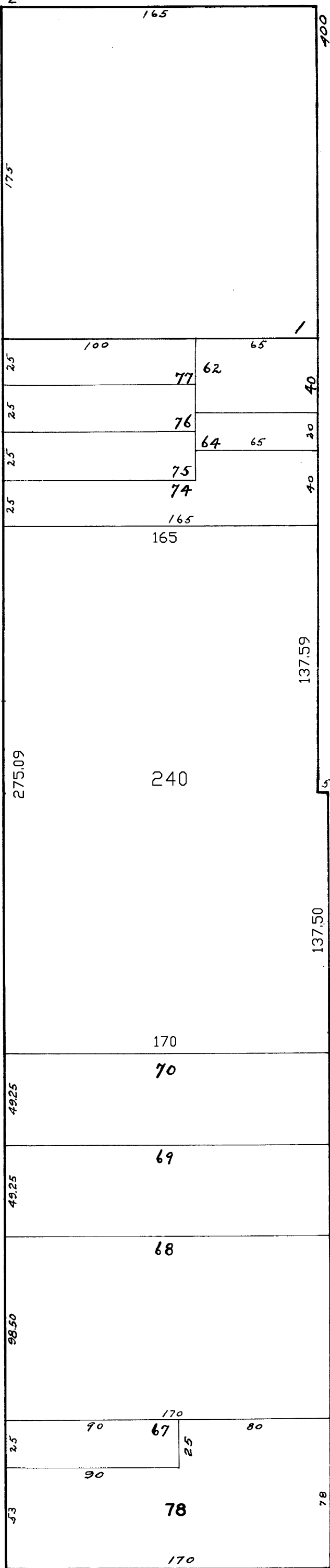
STEVENSON

JESSIE

MISSION

6TH

MINT



418-420 JESSIE ST.

LOT	UNIT
144	COMM'L1
145	COMM'L2
146	201
147	203
148	301
149	302
150	303
151	304
152	306
153	401
154	402
155	403
156	404
157	501
158	502
159	503
160	504
161	601
162	602
163	603
164	701
165	702
166	703
167	801
168	802
169	803
170	900

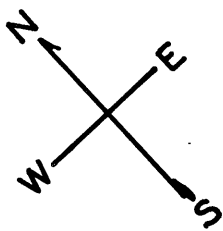
410 JESSIE ST.

LOT	UNIT
119	103
120	201
121	202
122	203
123	204
124	205
125	206
126	207
127	208
128	301
129	302
130	303
131	304
132	305
133	306
134	307
135	308
136	401
137	402
138	403
139	404
140	405
141	406
142	407
143	408

LOT	UNIT	% COMM. AREA
113	1	14
114	2	14
115	3	14
116	4	14
117	5	14
118	6	30

LOTS MERGED

Lots 4-5 merged into Lot 2 "43"  
19-33 "35"  
36-37-60-61 "43"  
44 "45"  
46-47-48-54-55-} "45"  
56-57 "42"  
63 "39"  
40-41-58 "17"  
30 "44"  
748 "6-56"



© COPYRIGHT SAN FRANCISCO  
CITY & COUNTY ASSESSOR 1995

3704  
100 VARA BLK.380

REVISED '57

MARKET

STEVENSON

JESSIE

MINT

MISSION

JESSIE

6TH

