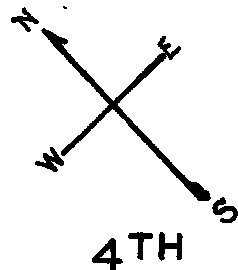


lots 9&10&12 to 15&17&18&33&38&43 & portion of Jessie St into lots 49 to 54 for 2004 roll
lot 49 into lots 55&56 for 2010 roll

Lots 11 merged into Lot 10 "48"
31-32 " 14 "
16 " 15 "
19-20-27-28-29-30 " 18 "
22-24/26 " 21 "
40-41 " 39 "
44 " 37 "
35 & 36 " 3 "



© COPYRIGHT SAN FRANCISCO
CITY & COUNTY ASSESSOR 1995

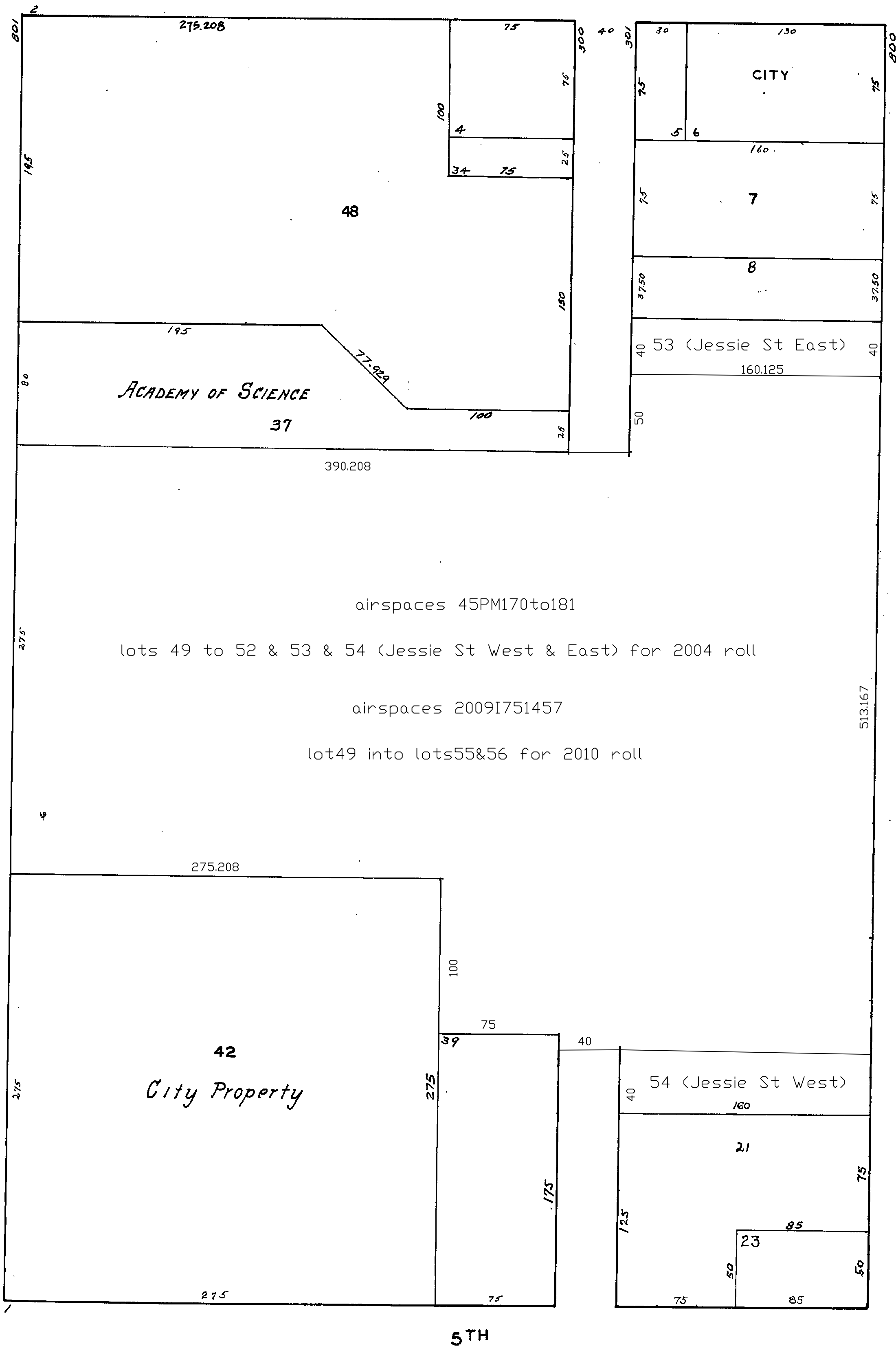
3705

100 VARA BLK. 371

Revised '80
" '83
" '93
Revised 2004
Revised 2010

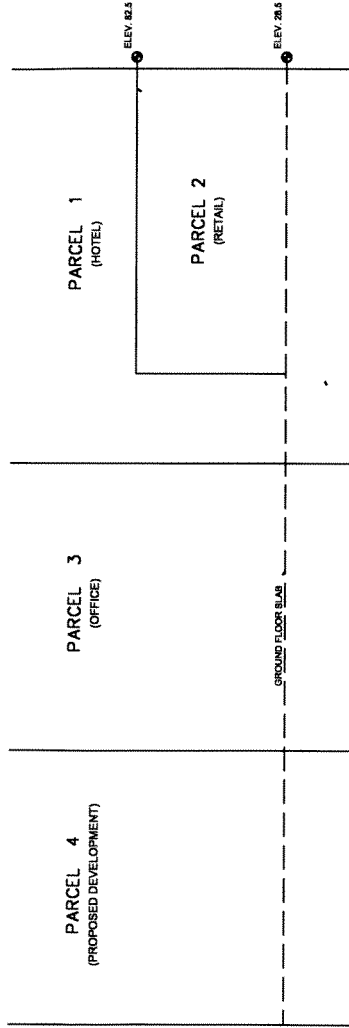
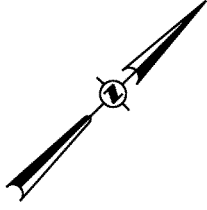
MARKET

MISSION

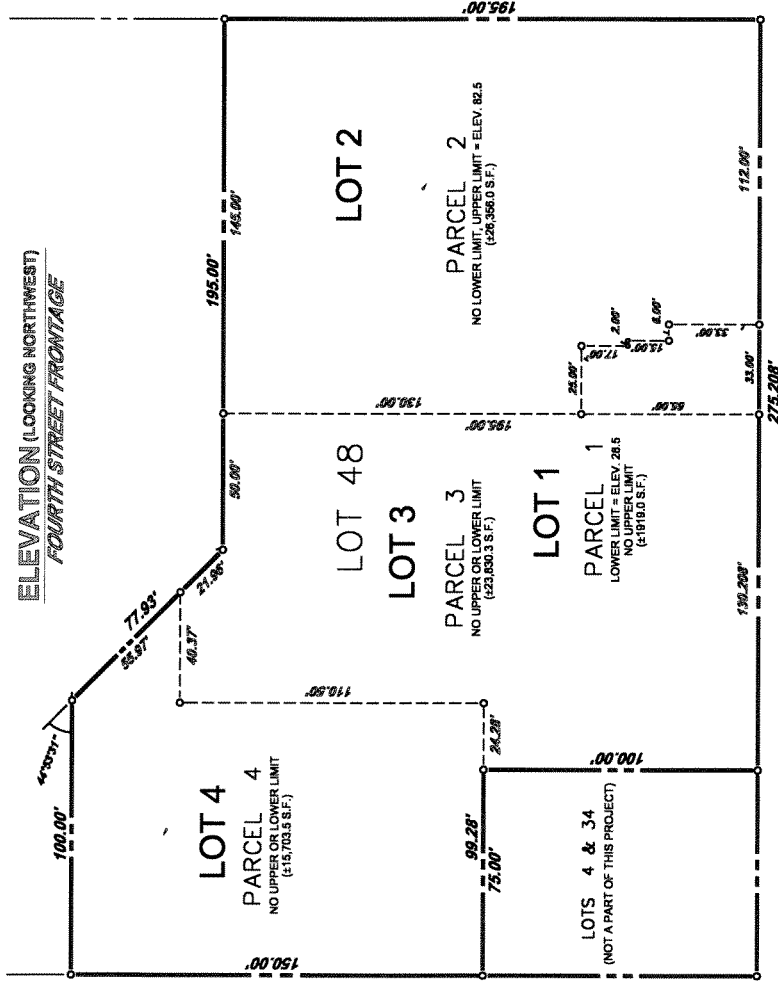


3705 Z

2001 roll



ELEVATION (LOOKING NORTHWEST)
FOURTH STREET FRONTAGE



Block 3705 Lot 48 into Block 3705Z lots 1 to 4
For tax assessment purposes only.

NOTE
ELEVATIONS ARE ON CITY OF SAN FRANCISCO DATUM.

MARKET STREET

JESSIE STREET

FOURTH STREET

TAX PARCEL MAP
ASSESSOR'S LOT 48, BLOCK 3705
BEING A PORTION OF 100 VARA BLOCK NO. 371
CITY AND COUNTY OF SAN FRANCISCO, CALIFORNIA
PREPARED BY
TRONOFF ASSOCIATES - LAND SURVEYORS
5858 HORTON STREET, SUITE 140 EMERYVILLE, CA
(510) 428-1515
SCALE 1"=30' SEPTEMBER 1, 2000
SURVEY NO. 4040-3