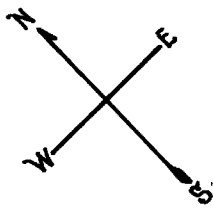


Lots 15-34 merged into Lot 14 "43"

15	16	17	18	19	20	21	22	23	24	25	26	27	28	29	30	31	32	33	34
1	2	3	4	5	6	7	8	9	10	11	12	13	14	15	16	17	18	19	20



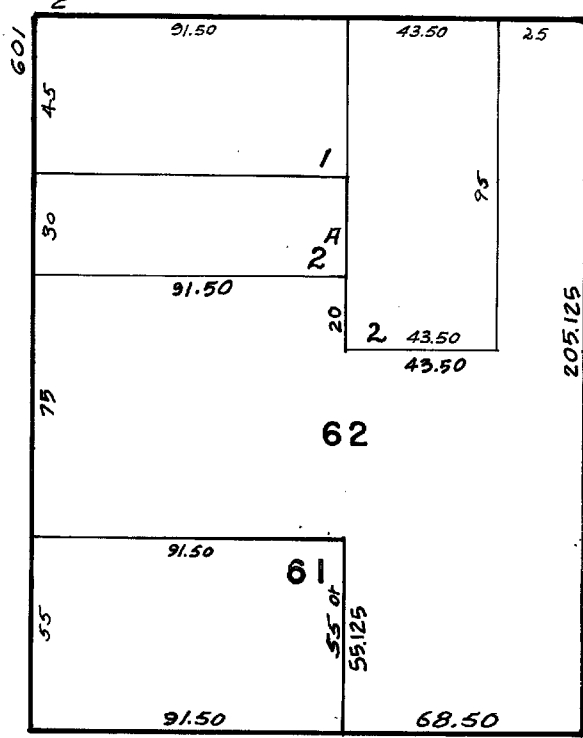
© COPYRIGHT SAN FRANCISCO  
CITY & COUNTY ASSESSOR 1995

3707

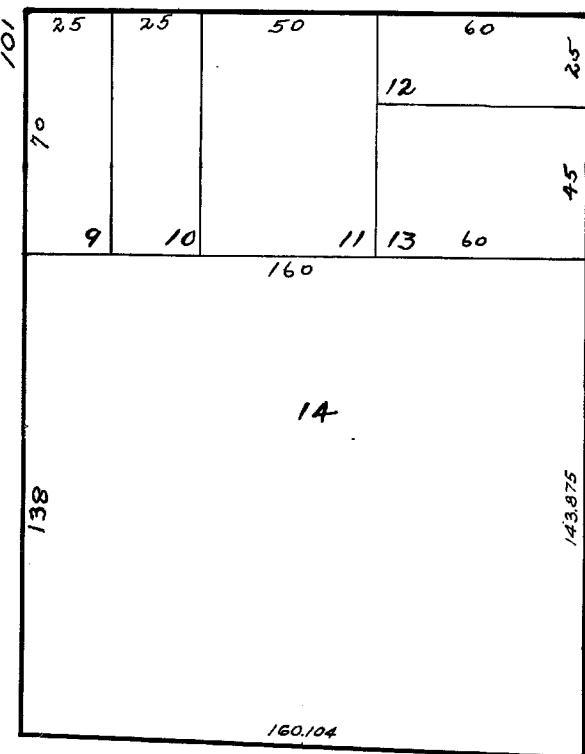
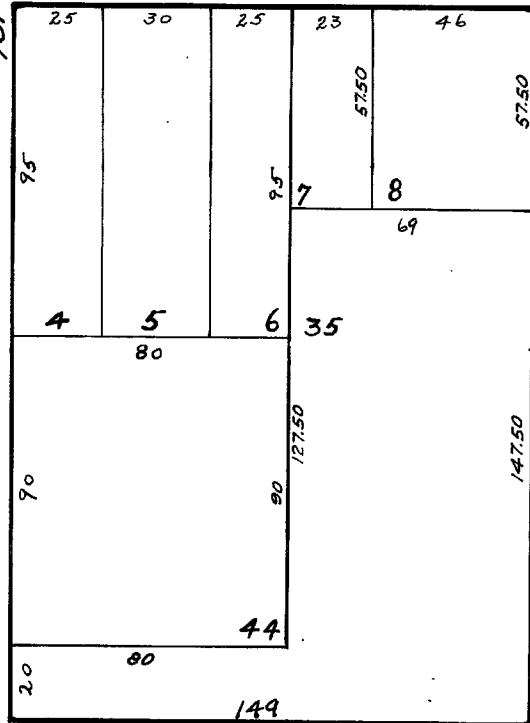
100 VARA BLK. 354

lots 22/25&28&29&31 into lot 63 for 2000 roll  
lot 33 into lots 64 to 173 for 2008 roll

2ND



STEVENSON

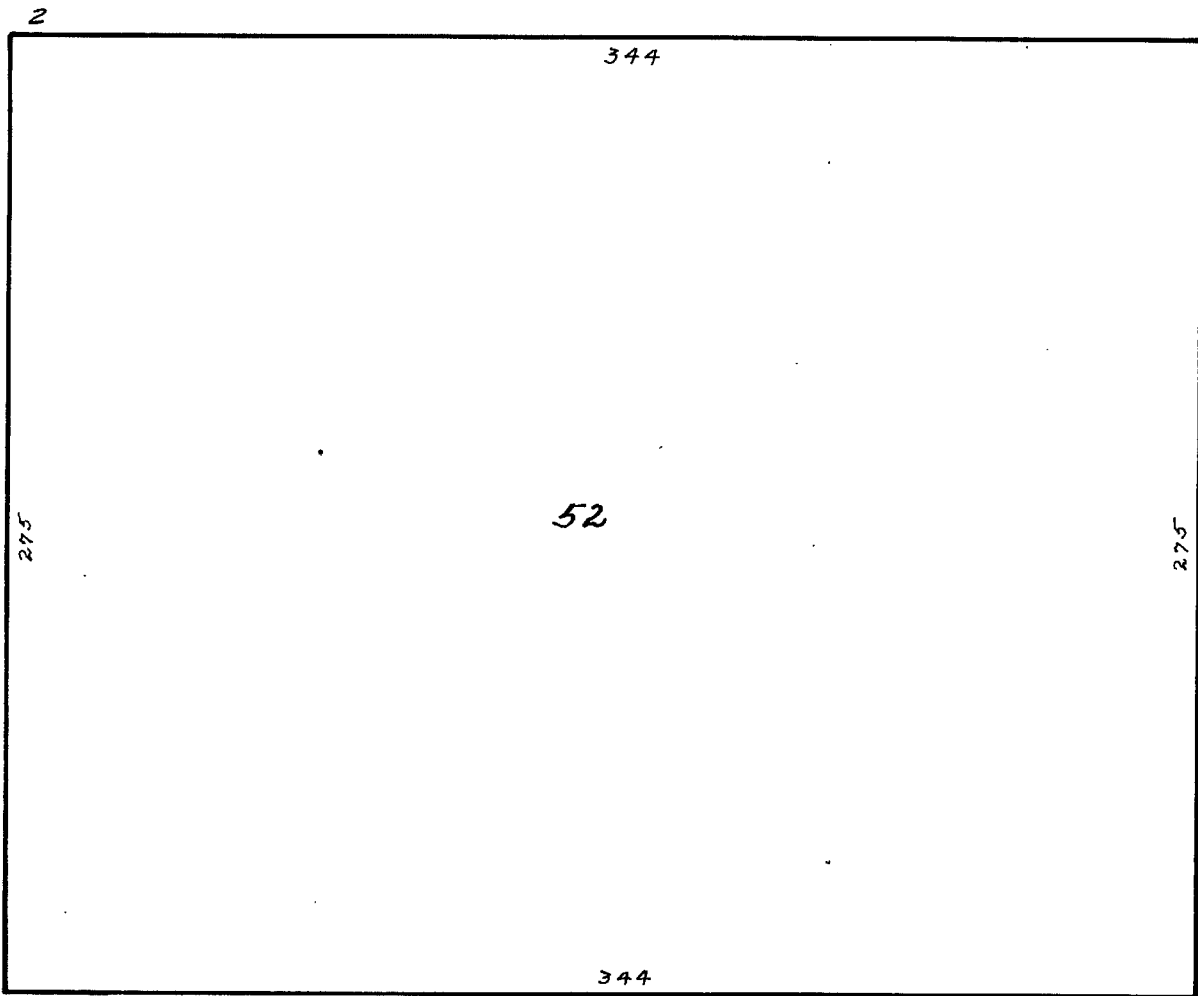


REVISED	'61
"	'69
"	'70
"	'83
"	'85

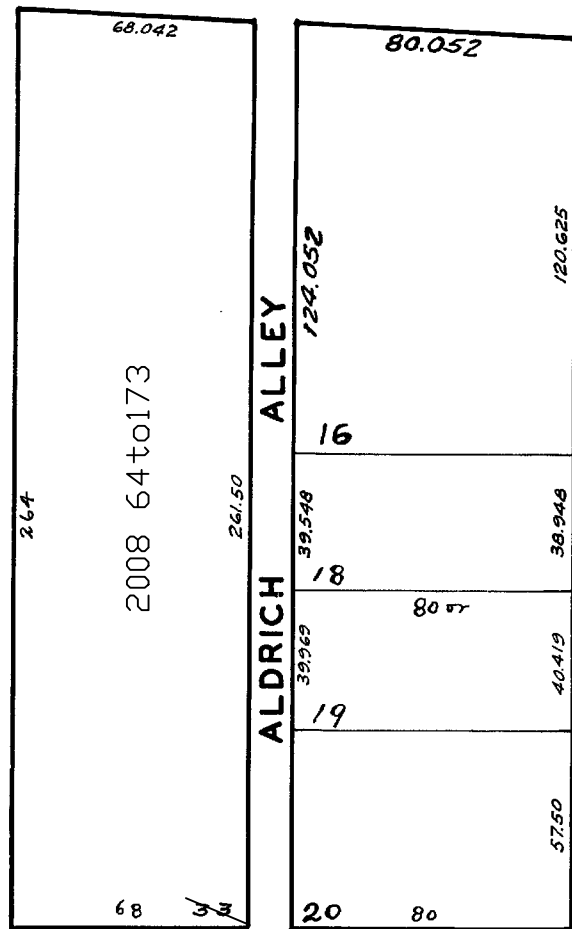
Revised 2000  
Revised 2008

NEW MONTGOMERY

MARKET

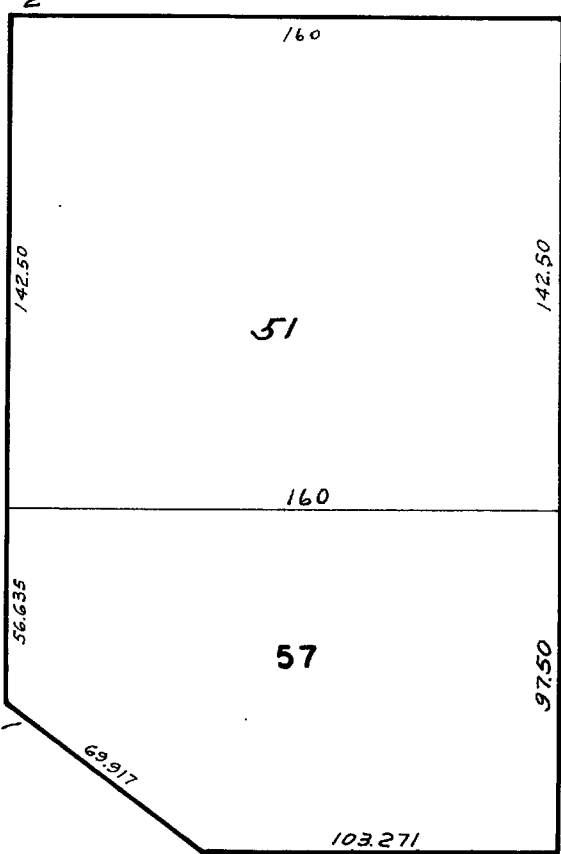


JESSIE

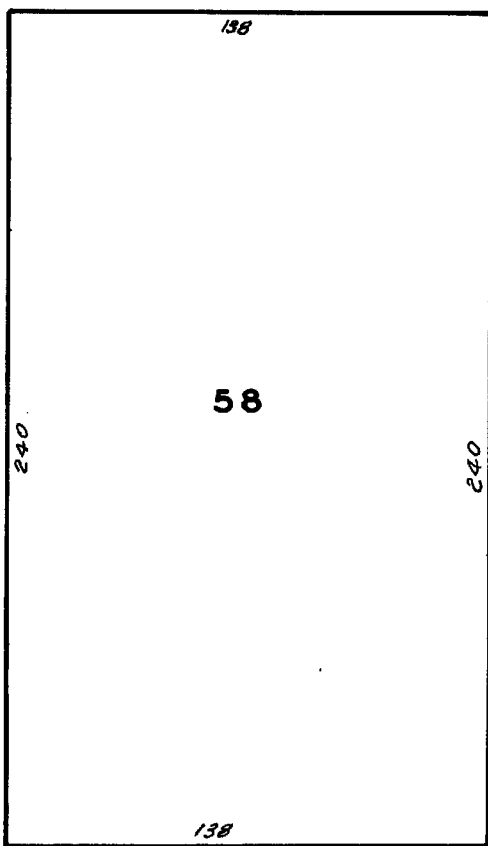


MISSION

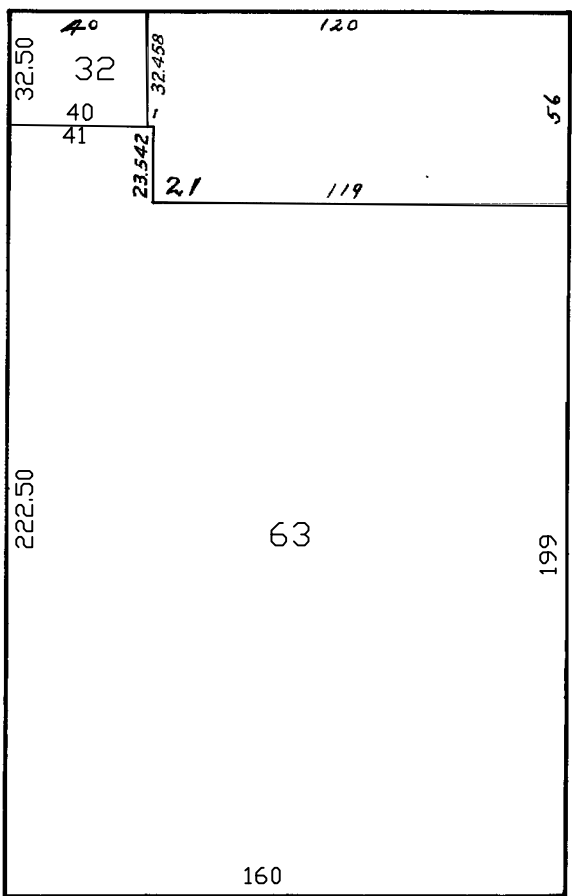
ANNIE (MARK TWAIN LANE)



STEVENSON



JESSIE



3RD