

lots79&80 into lots90&91 for 2001 roll
lots2&93(portion of Dow Place)into lot92 for 2001 roll
lot90 into lots599&600 for 2009 roll
lot599 into lots601to716 for 2010 roll

LOTS MERGED

Lots 6 & 7 merged into Lot 5 "1943"
" 11, 12, 20, 59, 60, " " 10
" 63 merged into Lot 64
" 63 " " 8 1996
" 61 & 2 " " 9 "1941"
" 55 " " 54 "1943"
" 51 " " 50
" 48 & 49 " " 47
" 39 " " 38
" 64-66-67 " 300 " 2 1946

Lots 37A merged into Lot 37
" 69 " " 69
" 12 " " 13 "47"
" 56/57 " " 54 "49"
" 47 " " 46-52
" 46 " " 45-63
" 33 " " 30-44
" 15, 16, 75 " 85, 86 78
" 1 " 87 & 88 84

17/19, 21/24, 27/32, 34/37, 37B
40/44, 58, 70/72, 74, 83/85 } into 89-1984

© COPYRIGHT SAN FRANCISCO
CITY & COUNTY ASSESSOR 1995

3750
100 VARA BLK. 357
SHEET 1
REVISED '57
REVISED '59

REVISED	'62
REVISED	'64
"	'67
"	'68
"	'75
"	'78
"	'84

Revised 2001
Revised 2009
Revised 2010

FOLSOM

HAWTHORNE

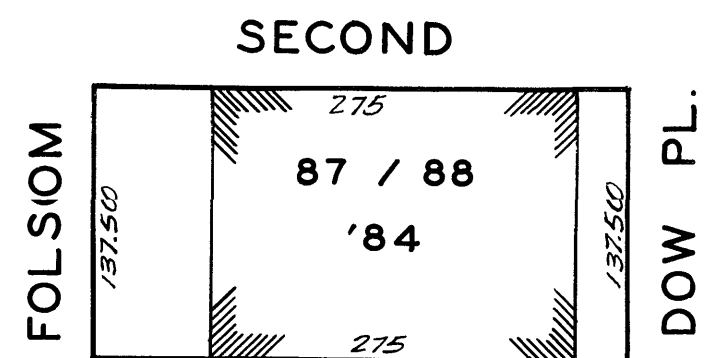
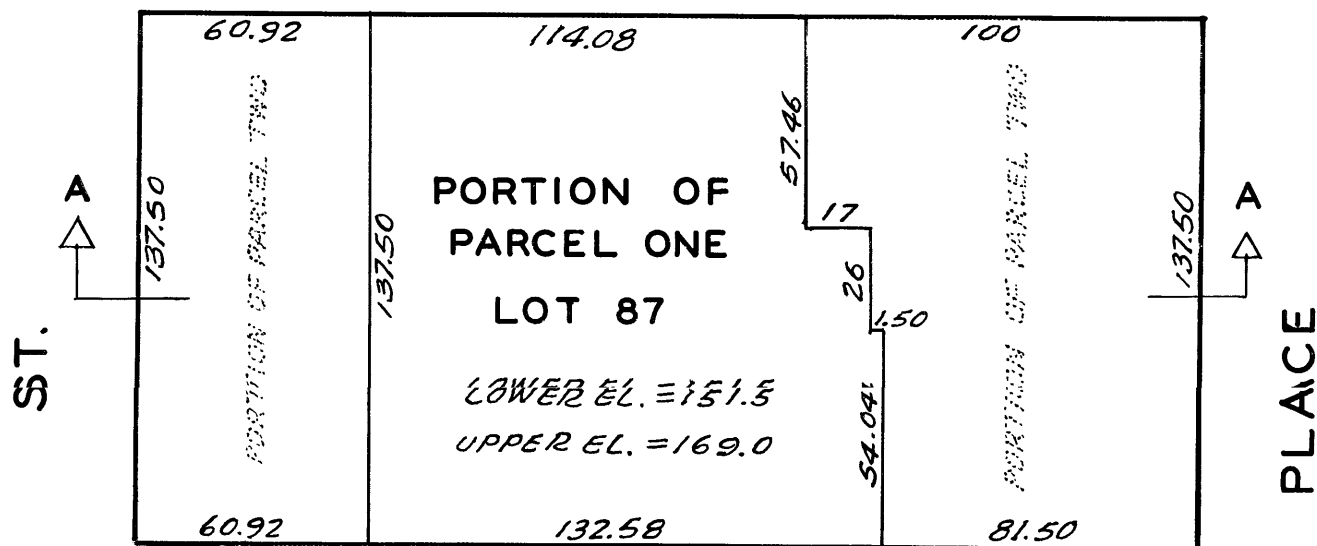
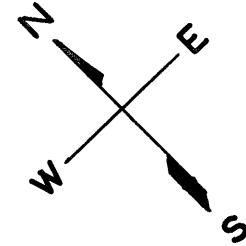
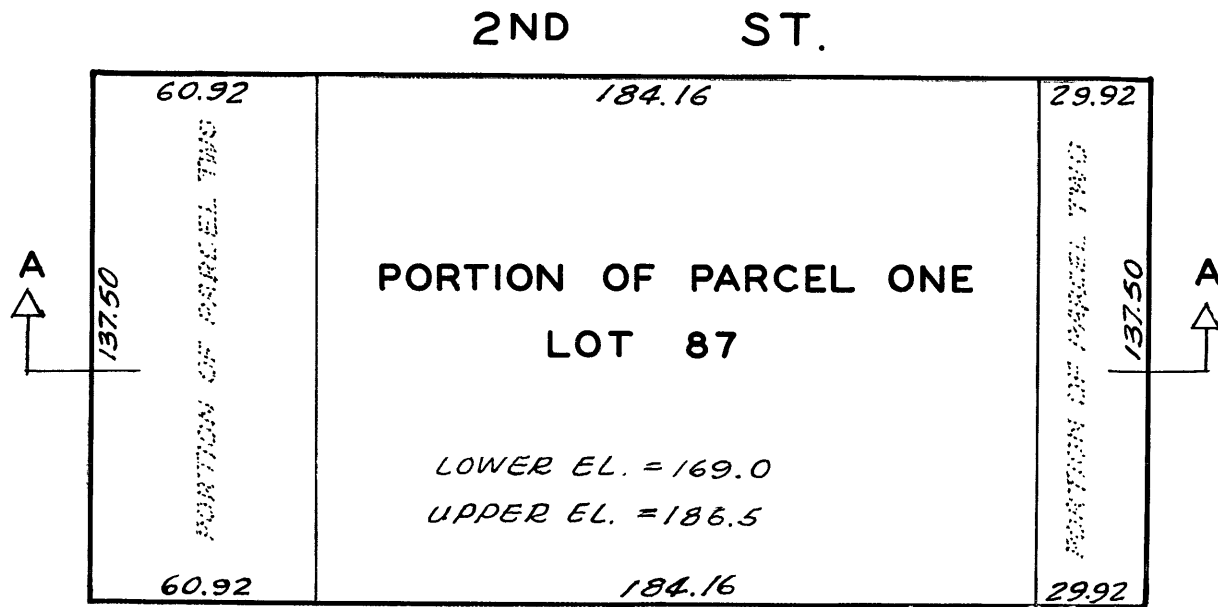
HARRISON

3 RD

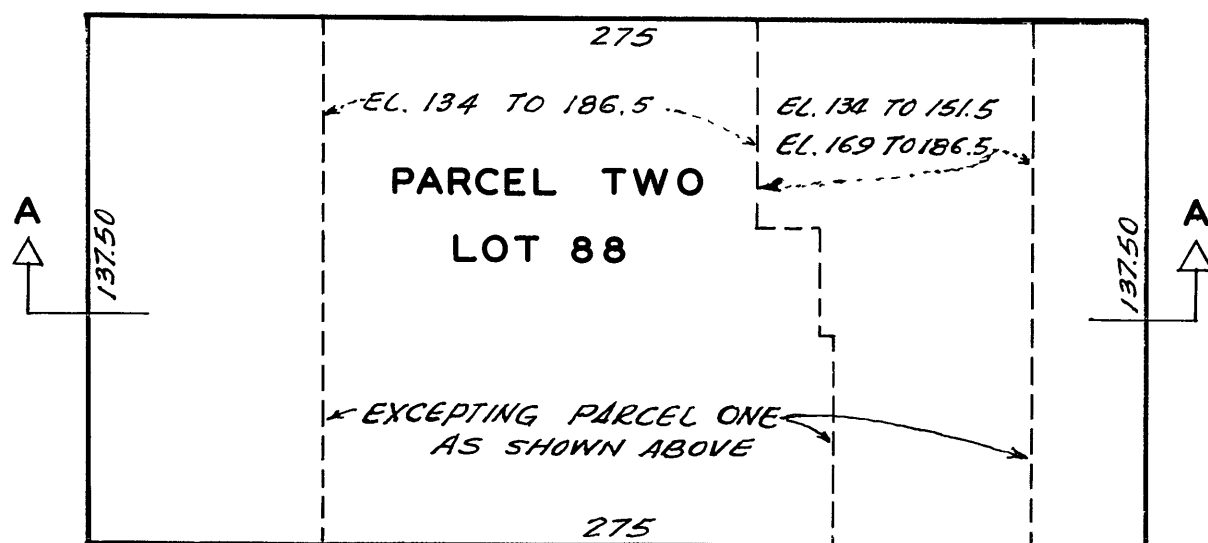
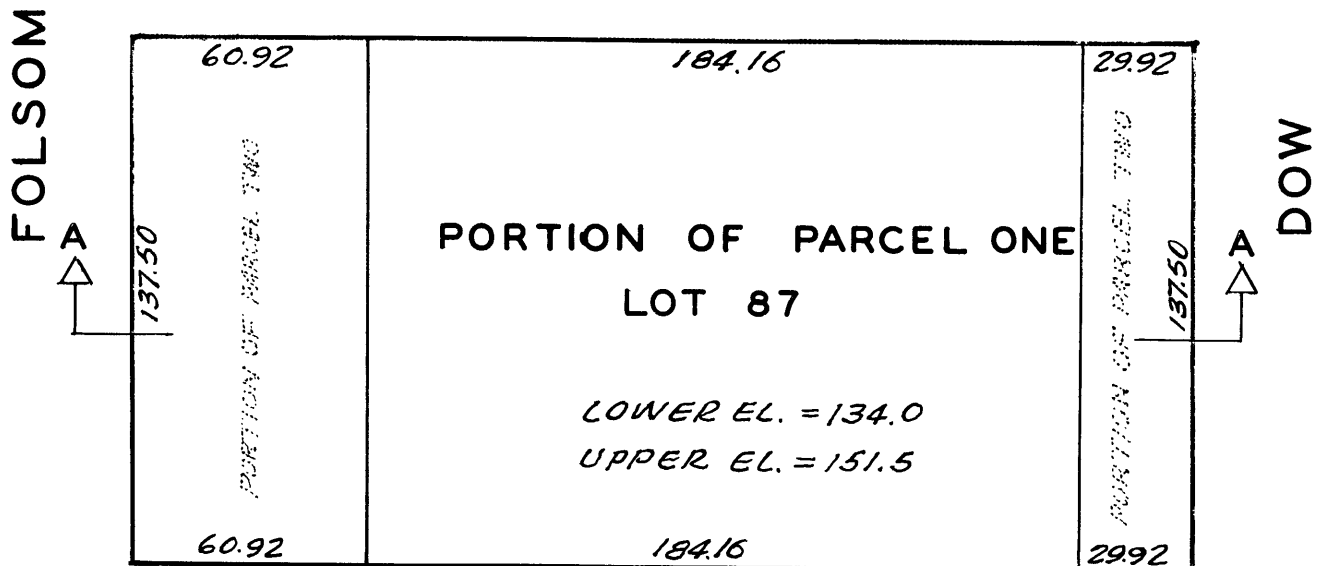
3750

SHEET 2

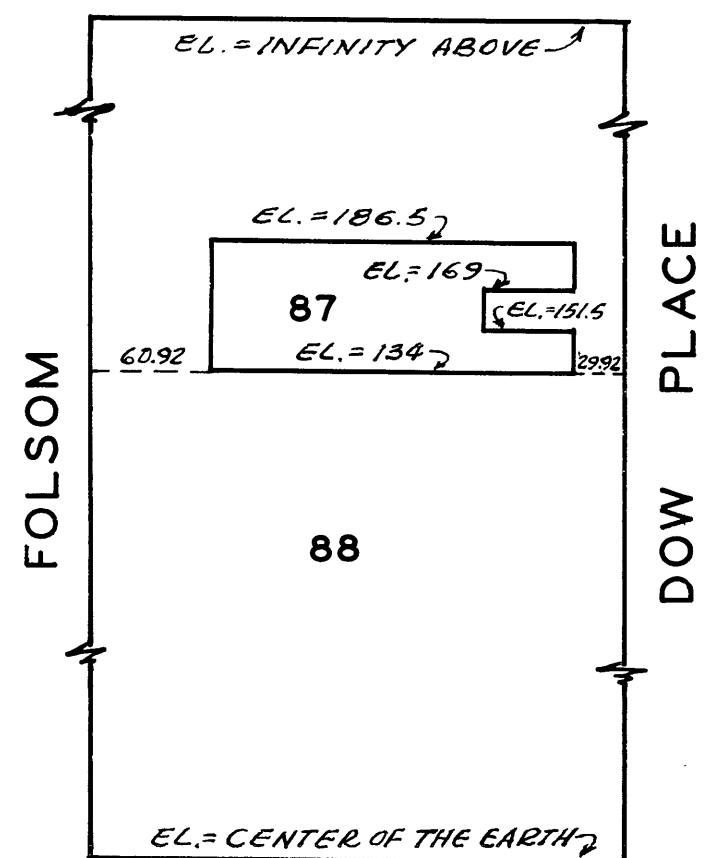
SUBDIVISION OF AIRSPACE



SITE MAP



LOWER ELEVATION = CENTER OF THE EARTH
UPPER ELEVATION = INFINITY ABOVE



3750

SHEET 3

2003roll

Lot92 into lots515to598 for 2003 roll

DOW PLACE LOFTS
LOT UNIT % COMM. AREA

515	100	1.728
516	102	1.257
517	103	1.270
518	104	1.141
519	105	1.055
520	106	1.346
521	107	1.151
522	108	1.133
523	109	1.243
524	110	1.247
525	111	1.283
526	300	1.170
527	301	1.095
528	302	1.274
529	303	1.270
530	304	1.141
531	305	1.055
532	306	1.344
533	307	1.152
534	308	1.134
535	309	1.245
536	310	1.247
537	311	1.385
538	500	1.170
539	501	1.095
540	502	1.274
541	503	1.270
542	504	1.141
543	505	1.055
544	506	1.344
545	507	1.152
546	508	1.134
547	509	1.245
548	510	1.247
549	511	1.385
550	700	1.170
551	701	1.095
552	702	1.274
553	703	1.270
554	704	1.141
555	705	1.055
556	706	1.344

557	707	1.152
558	708	1.134
559	709	1.245
560	710	1.247
561	711	1.385
562	900	1.003
563	901	1.095
564	902	1.273
565	903	1.268
566	904	1.141
567	905	0.888
568	906	1.073
569	907	1.141
570	908	1.128
571	909	1.239
572	910	1.240
573	911	1.103
574	1100	1.003
575	1101	1.095
576	1102	1.273
577	1103	1.268
578	1104	1.141
579	1105	0.888
580	1106	1.073
581	1107	1.141
582	1108	1.128
583	1109	1.239
584	1110	1.240
585	1111	1.103
586	1300	1.003
587	1301	1.095
588	1302	1.273
589	1303	1.268
590	1304	1.141
591	1305	0.888
592	1306	1.073
593	1307	1.141
594	1308	1.128
595	1309	1.239
596	1310	1.240
597	1311	1.103
598	C-1	1.842