

LOTS MERGED

Lots 34 Merged into Lot 2-43
 6A, 29A-30 " " 6-43
 13-24-25-26 " " 12-43
 28-29 " " 7-43
 35/37 " " 2/2A-55
 2A, 6, 31/32 " " 3-56
 16/23 " " 15-56

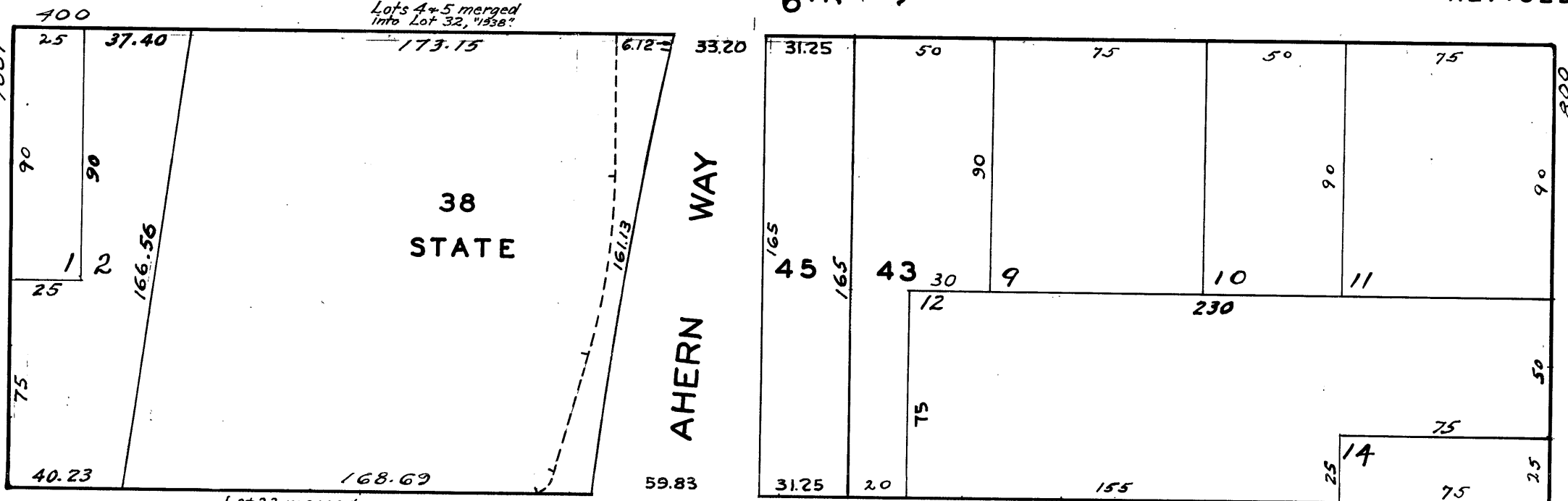
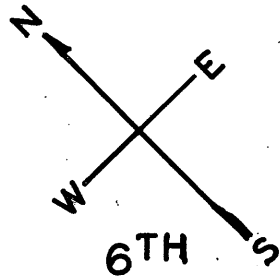
© COPYRIGHT SAN FRANCISCO
 CITY & COUNTY ASSESSOR 1995

3759

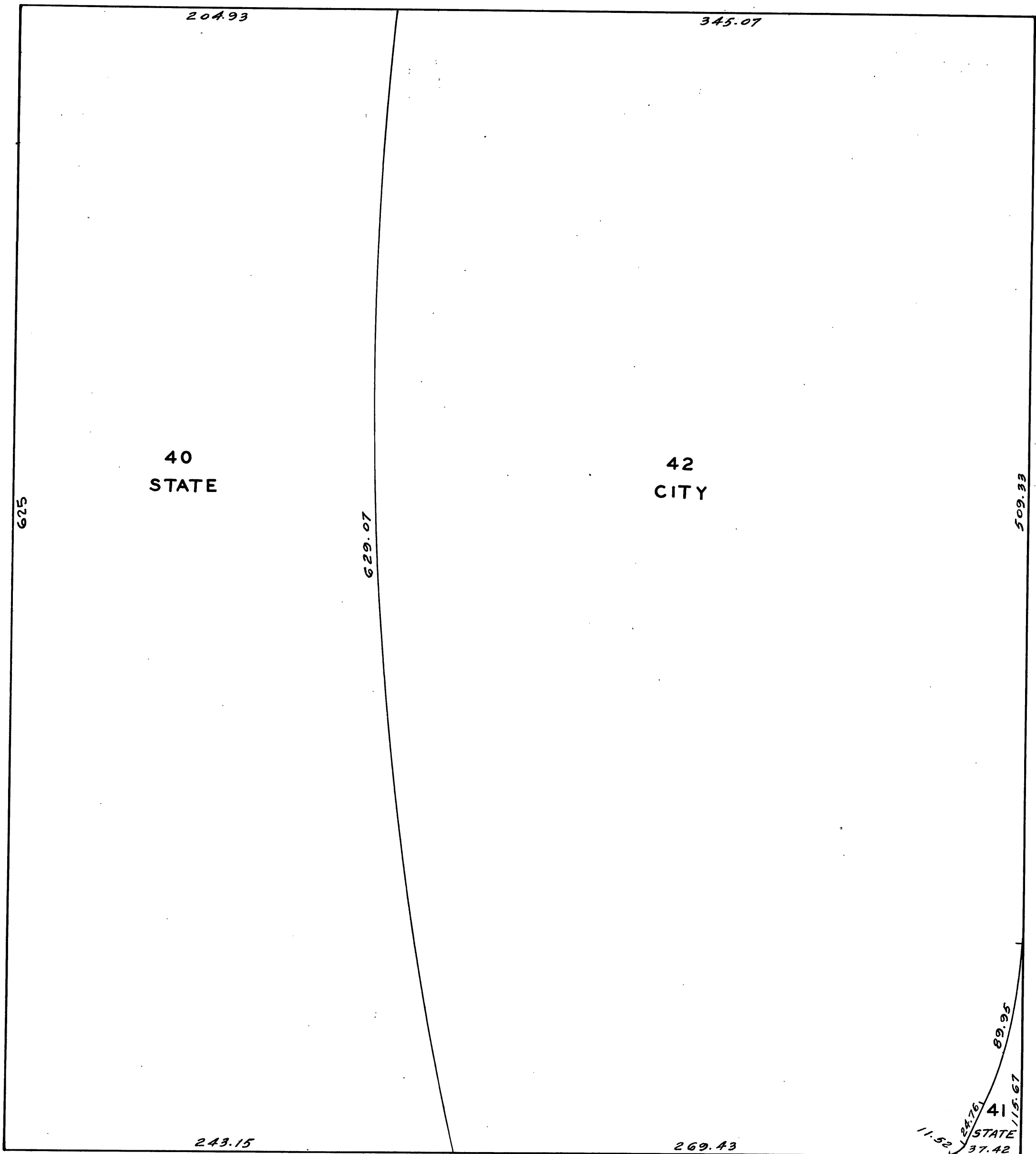
100 VARA BLK.397

REVISED '57

REVISED '58
 REVISED '60
 REVISED '61



HARRIET



7TH

HARRISON

BRYANT