

Block 3785

Sheet 2

Revised 2002

175 BLUXOME ST. A CONDOMINIUM

LOT	UNIT	% COMM. AREA
30	101	0.96
31	102	0.92
32	103	0.96
33	104	0.99
34	105	1.06
35	106	1.06
36	107	1.06
37	108	0.82
38	109	0.82
39	110	1.06
40	111	1.06
41	112	1.06
42	113	1.06
43	114	1.06
44	115	0.70
45	116	1.06
46	117	1.05
47	118	0.83
48	119	0.98
49	120	0.95
50	121	0.93
51	122	0.92
52	123	0.94
53	124	0.97
54	125	0.98
55	126	0.79
56	127	0.98
57	128	0.97
58	129	0.94
59	130	0.94
60	131	0.88
61	132	0.93
62	133	0.89
63	134	0.71
64	201	1.08
65	202	1.07
66	203	1.07
67	204	1.07
68	205	1.07
69	206	1.07
70	207	1.07
71	208	1.07
72	209	1.07
73	210	1.07
74	211	1.07
75	212	1.07
76	213	1.07
77	214	1.07
78	215	1.07
79	216	1.07
80	217	1.07
81	218	0.80

LOT	UNIT	% COMM. AREA
82	219	1.00
83	220	0.89
84	221	0.87
85	222	0.88
86	223	0.89
87	224	1.00
88	225	1.00
89	226	0.81
90	227	0.81
91	228	1.00
92	229	1.00
93	230	0.89
94	231	0.88
95	232	0.86
96	233	0.89
97	234	0.99
98	235	0.80
99	301	1.08
100	302	1.07
101	303	1.07
102	304	1.08
103	305	1.07
104	306	1.08
105	307	1.07
106	308	1.08
107	309	1.08
108	310	1.07
109	311	1.08
110	312	1.07
111	313	1.08
112	314	1.07
113	315	1.08
114	316	1.07
115	317	1.07
116	318	0.90
117	319	1.01
118	320	0.86
119	321	0.91
120	322	0.92
121	323	0.86
122	324	1.01
123	325	1.03
124	326	1.03
125	327	1.01
126	328	0.86
127	329	0.92
128	330	0.89
129	331	0.86
130	332	1.00
131	333	0.89

Block 3785 Lot 29

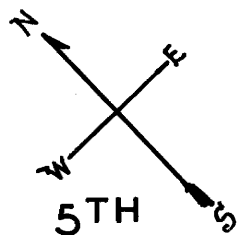
Sheet 2

lot7 into lots25to28 for 98 roll
lots25to28 into lot29 for 2000 roll
lots1&8 into lot132 for 2002 roll
lot29 into lots30to131 for 2002 roll
lots20&21 into lots133to136 for 2003 roll
lot133 into lots185to232 for 2008 roll

lot134 into lots137to184 for 2008 roll
lot136 into lots233/271 for 2014 roll
lot135 into lots272/313 for 2014 roll

LOTS MERGED

LOTS	INTO LOT	1943
" 13-14-15 "	" 7 "	43
" 178 "	" 8 "	"
" 174 "	" 17 "	45
" 11/12 "	" 10 "	53



© COPYRIGHT SAN FRANCISCO
CITY & COUNTY ASSESSOR 1995

SHEET 1
3785

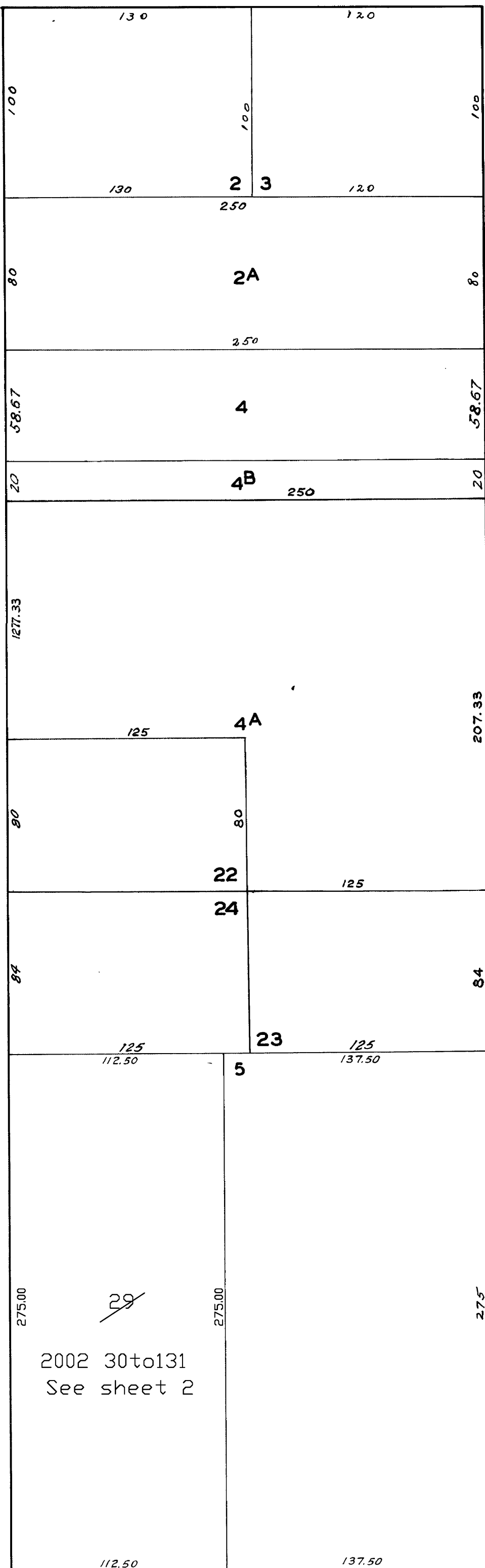
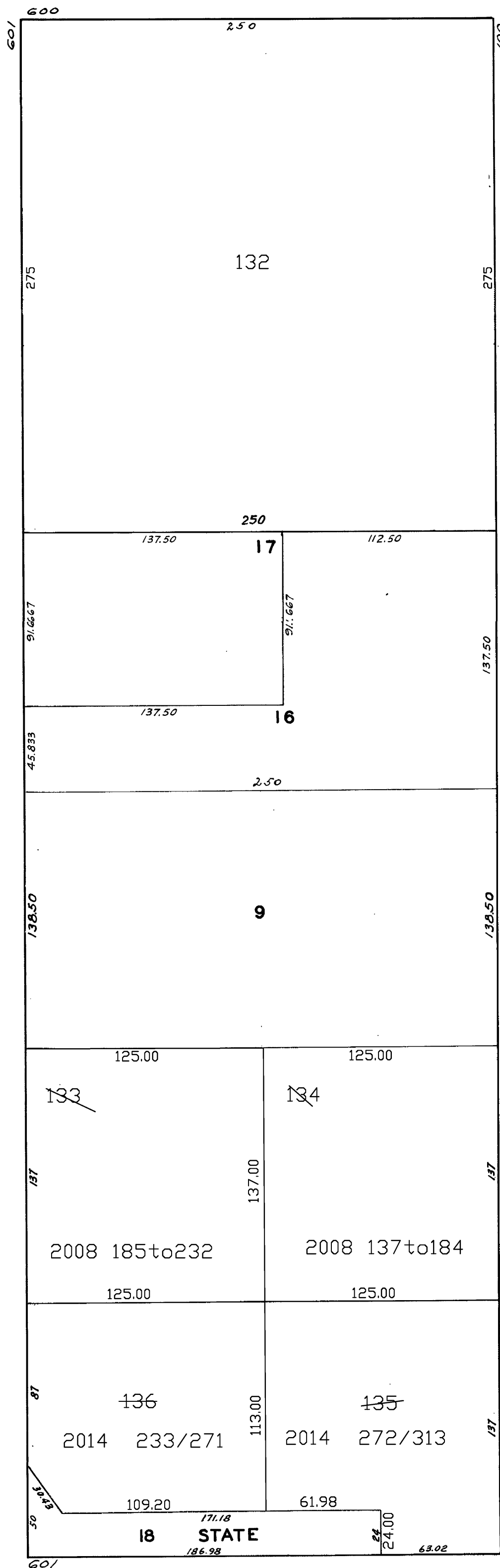
100 VARA BLK.386

BRANNAN

BLUXOME

TOWNSEND

REVISED '68
" '71
" '72
Revised 1998
Revised 2000
Revised 2002
Revised 2003
Revised 2008
Revised 2014



6TH