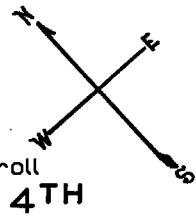


LOTS MERGED  
LOTS 6-7 INTO LOT 5 1993  
10-11-12 " " 9 '93  
14A " " 14 '93  
26-28-26B " " 25 '93  
32 " " 31 '93  
30 " " 29 '93  
25 " " 24 '93  
lot 40 into lots 43/62 for 2000 roll  
lot 17 into lots 40/42 for 1999 roll  
600 lot 41 into lots 63/82 for 2000 roll

© COPYRIGHT SAN FRANCISCO  
CITY & COUNTY ASSESSOR 1995



lot42 into lots83/102 for 2001 roll  
lots 8&9 into lots103to106 for 2004 roll  
lot103 into lots107to160 fpr 2004 roll  
lot13 into lots263to307 for 2007 roll  
lot19 into lots161to262 for 2008 roll  
Lot 38 into lots 321 & 322 for 2016 roll

3786

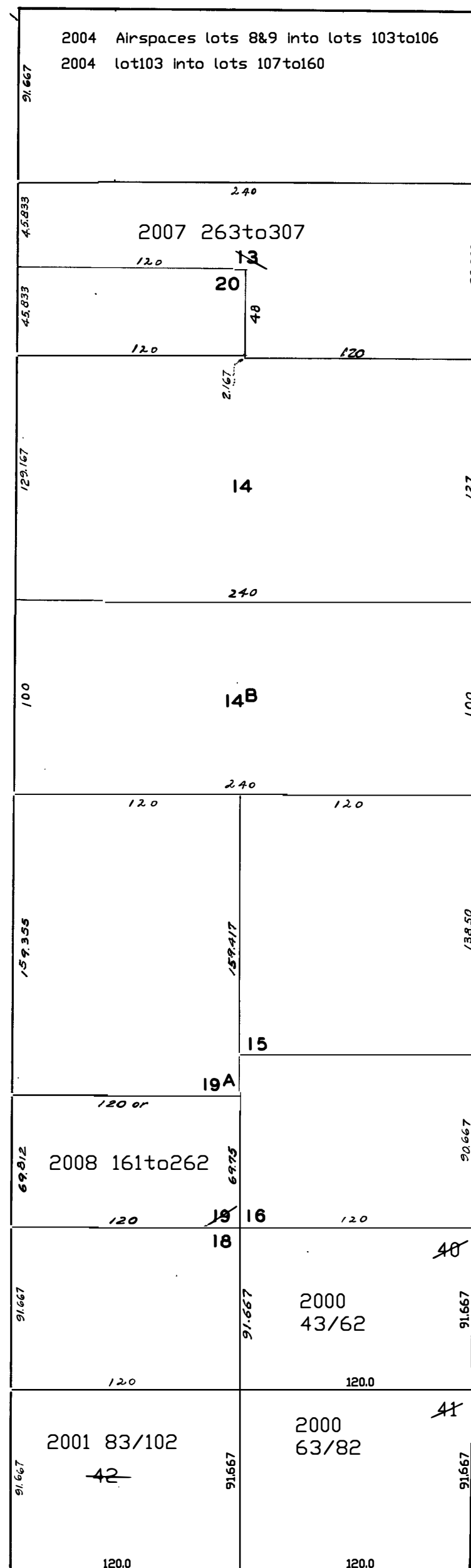
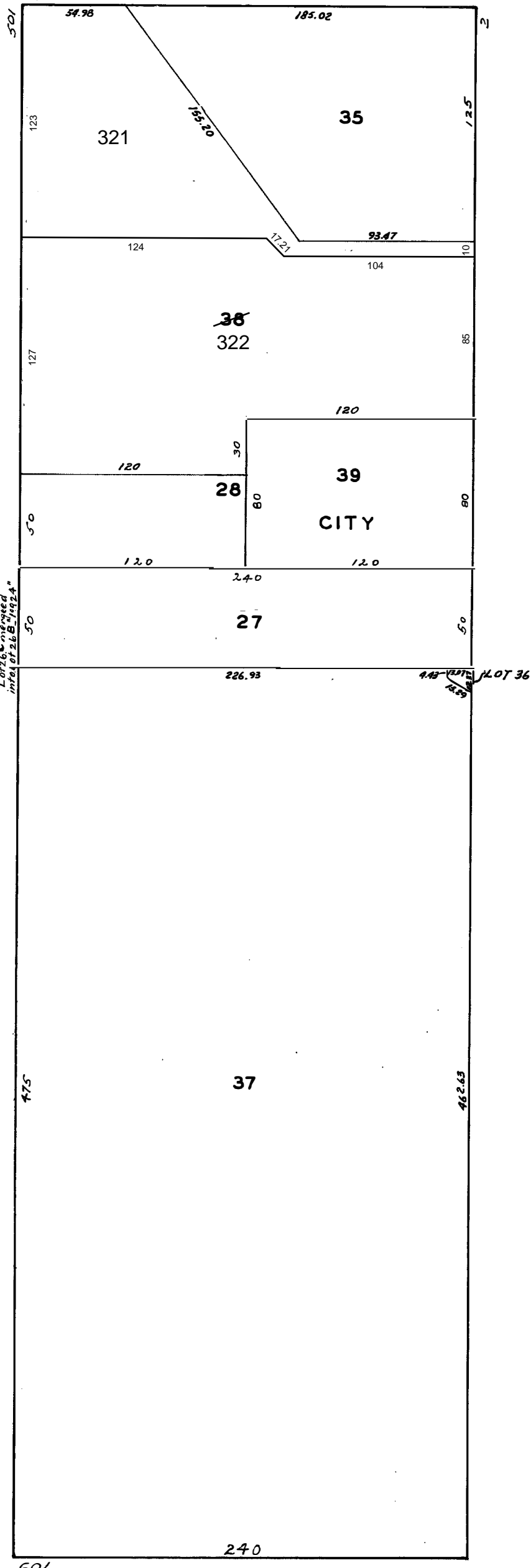
REVISED	'66
"	'71
"	'77
"	'88
"	'99
"	'00
"	'01
"	'04
"	'07
"	'08
"	'16

Revised 1999  
Revised 2000  
Revised 2001  
Revised 2004  
Revised 2007  
Revised 2008  
REVISED 2016

LOT	UNIT	% COMM. AREA
83	1	4.44
84	2	4.25
85	3	4.64
86	4	4.04
87	5	4.94
88	6	4.36
89	7	5.18
90	8	4.60
91	9	8.07
92	10	7.06
93	11	4.44
94	12	4.25
95	13	4.84
96	14	4.44
97	15	5.13
98	16	4.63
99	17	5.28
100	18	4.75
101	19	6.17
102	20	4.49

LOT	UNIT	% COMM. AREA
43	1	6.81
44	2	4.82
45	3	4.86
46	4	4.66
47	5	5.11
48	6	4.48
49	7	5.31
50	8	4.16
51	9	5.57
52	10	4.47
53	11	5.00
54	12	4.90
55	13	5.00
56	14	4.86
57	15	5.26
58	16	4.64
59	17	5.47
60	18	4.45
61	19	5.56
62	20	4.61

LOT	UNIT	% COMM. AREA
63	1	4.39
64	2	4.30
65	3	4.65
66	4	4.06
67	5	4.90
68	6	4.31
69	7	5.07
70	8	4.48
71	9	8.01
72	10	7.23
73	11	4.39
74	12	4.38
75	13	4.36
76	14	4.86
77	15	5.11
78	16	4.59
79	17	5.28
80	18	4.64
81	19	6.20
82	20	4.69



TOWNSEND

LOT	UNIT	% COMM. AREA
263	101	2.89
264	102	3.26
265	103	1.97
266	104	2.70
267	105	2.78
268	106	1.54
269	107	1.70
270	108	1.53
271	109	2.48
272	110	3.15
273	201	3.28
274	202	2.11
275	203	2.54
276	204	1.97
277	205	2.76
278	206	1.54
279	207	1.79
280	208	1.76
281	209	2.59
282	210	1.90
283	211	2.12
284	301	3.28
285	302	2.11
286	303	2.54
287	304	1.97
288	305	2.76
289	306	1.46
290	307	1.54
291	308	1.79
292	309	1.76
293	310	2.59
294	311	1.90
295	312	2.12
296	401	3.28
297	402	2.11
298	403	2.54
299	404	1.97
300	405	2.76
301	406	1.46
302	407	1.54
303	408	1.79
304	409	1.76
305	410	2.59
306	411	1.90
307	412	2.12