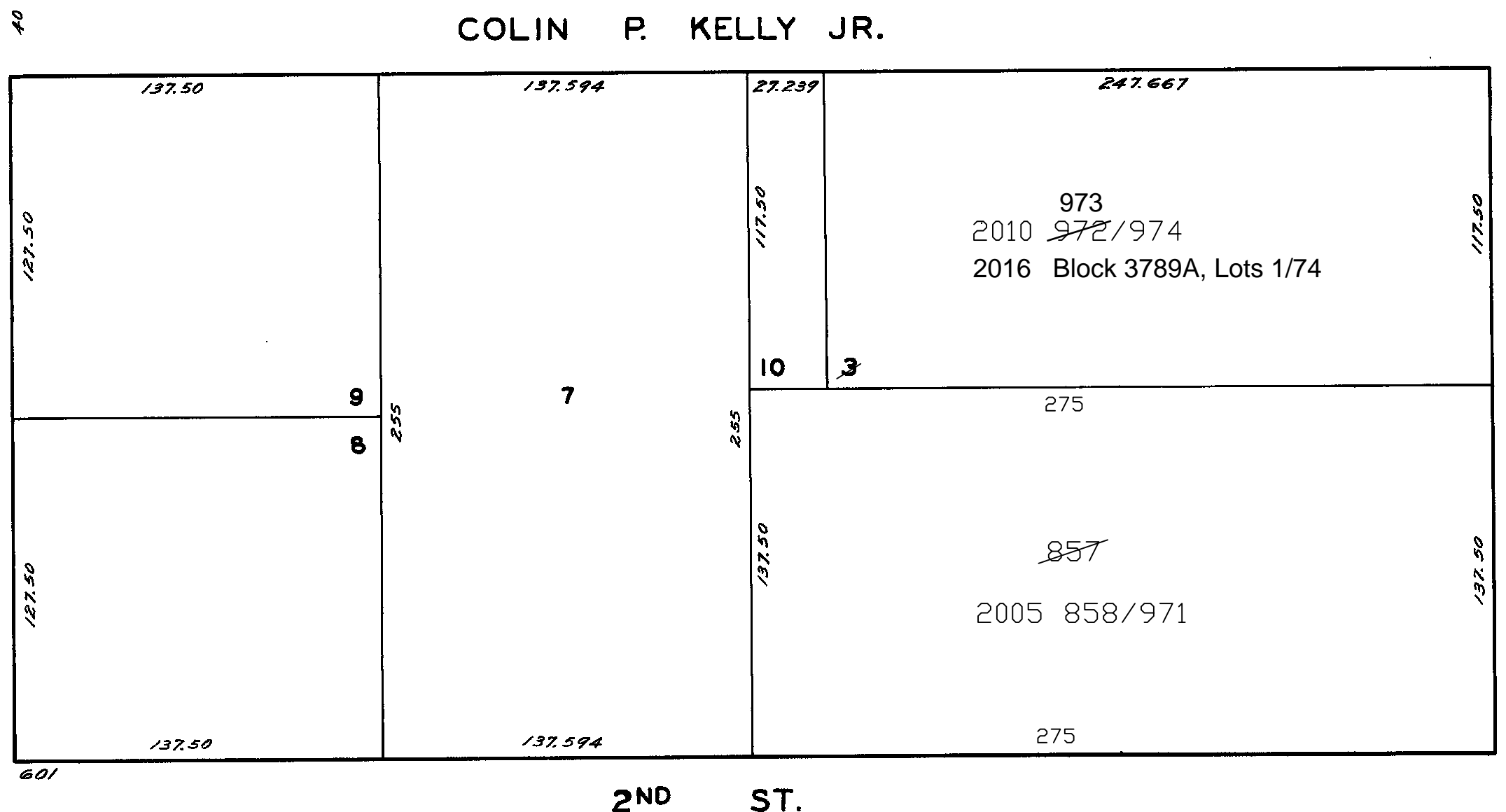
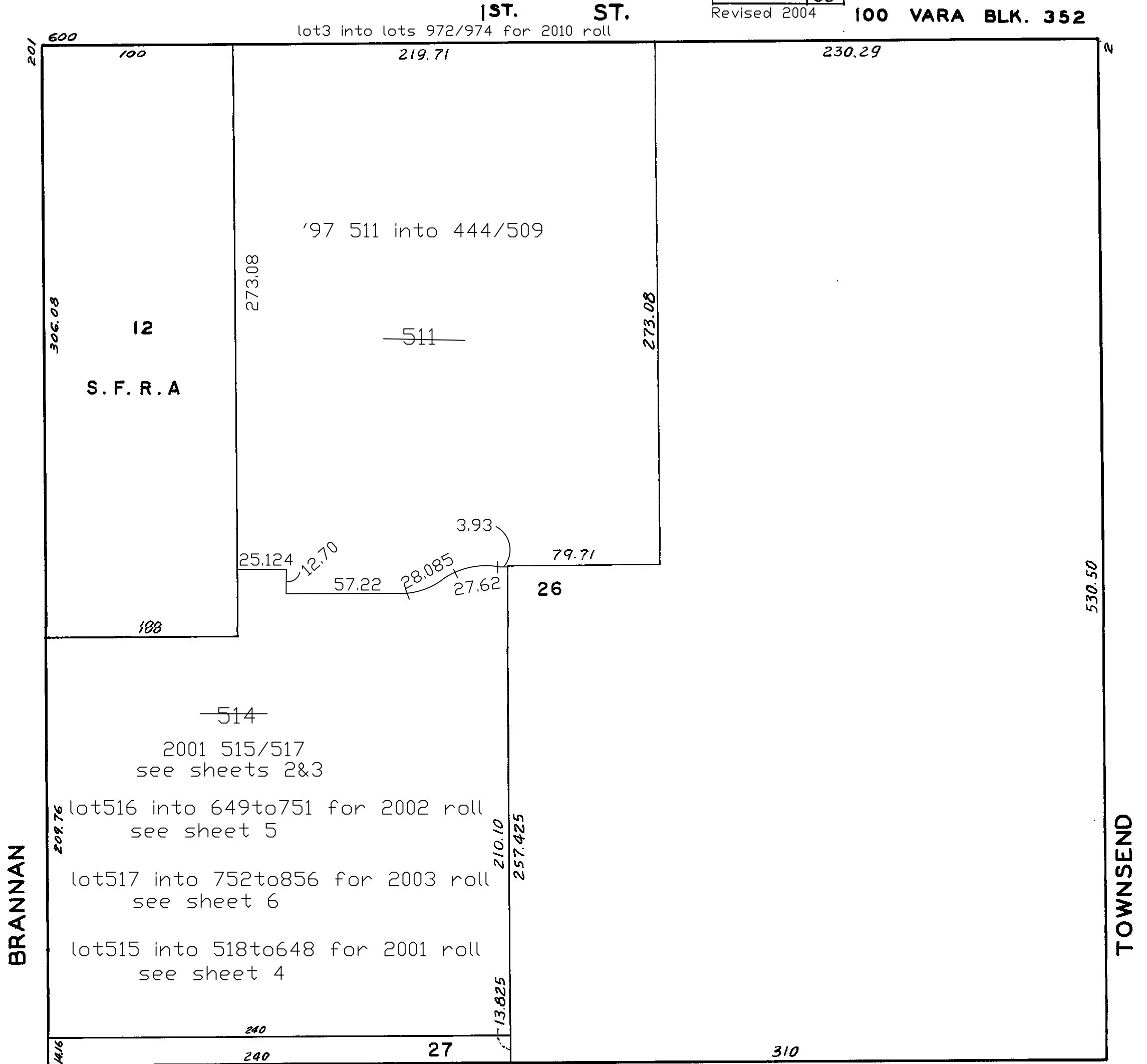


LOTS MERGED
 LOTS 2E, 2D INTO LOT 1B -1943
 " 6 " 5 " "
 " 2 & 2A " 1 " "
 " 2B, 2C " 1A " "
 " 1D " 1B " "
 Lot 972 into Block 3789A-Lots 1 to 74 for 2016 roll


lot857 into lots858/971 for 2005 roll
 lots20 & 25 into lots 510&511 for 1997 roll
 lot511 into lots 444/509 for 1997 roll
 lots12 & 510 into lot514 for 2000 roll
 lot514 into lots515/517 for 2001 roll
 lot515 into lots518to648 for 2001 roll
 lot516 into lots649to751 for 2002 roll
 lot517 into lots752to856 for 2003 roll
 lots4&5 into lot857 for 2004 roll

REVISED	'61
"	'66
"	'67
"	'68
"	'71
"	'75
"	'86

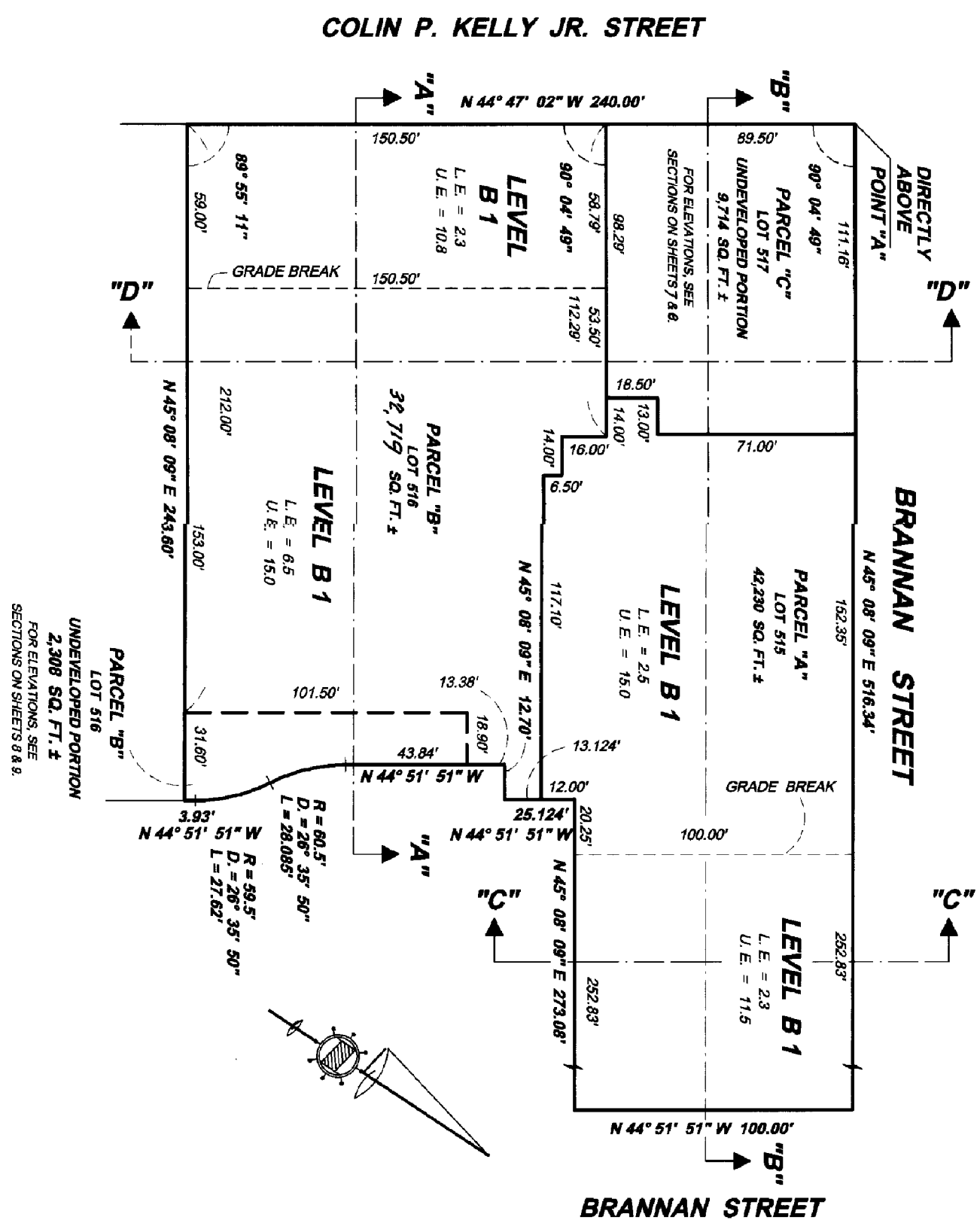
Revised 2002
 Revised 1997
 Revised 2000
 Revised 2001
 Revised 2003
 Revised 2005
SHEET 1
3789
 Revised 2010
 REVISED 2016

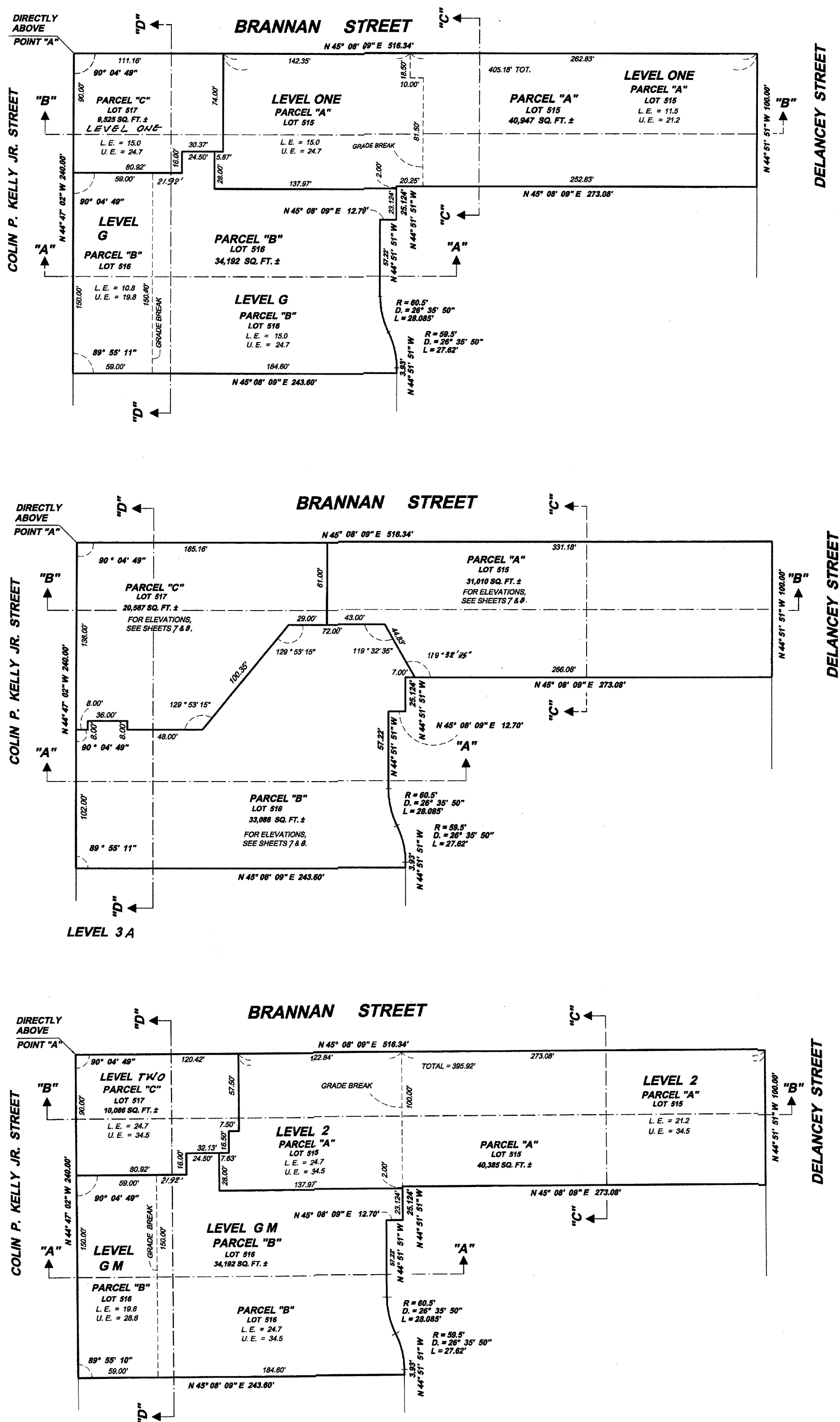




 LOT LINE
 GRADE BREAK
 UNDEVELOPED AREA LINE

NO.	LOT NO.	PARCEL NO.
1	515	A
2	516	B
3	517	C





BLOCK3789
SHEET 4

Revised 2001

219 BRANNAN STREET

2001 Roll

LOT	UNIT	%COMM AREA
518	A	2.66
519	1B	0.60
520	1C	0.60
521	1D	0.58
522	1E	0.35
523	1F	0.86
524	1G	0.71
525	1H	0.61
526	1J	0.56
527	1K	0.70
528	2B	0.72
529	2C	0.64
530	2D	0.82
531	2E	0.32
532	2F	0.90
533	2G	1.15
534	2H	0.82
535	2J	1.05
536	3A	0.83
537	3B	0.49
538	3C	0.61
539	3D	0.80
540	3E	0.32
541	3F	0.90
542	3G	1.15
543	3H	0.82
544	3J	1.05
545	3K	1.10
546	4A	0.83
547	4B	0.49
548	4C	0.61
549	4D	0.80
550	4E	0.32
551	4F	0.90
552	4G	1.15
553	4H	0.82
554	4J	0.78
555	4K	0.87
556	5A	0.83
557	5B	0.49
558	5C	0.61
559	5D	0.80
560	5E	0.76
561	5G	0.89
562	5H	0.56
563	5J	0.78
564	5K	0.87
565	6A	0.83
566	6B	0.49
567	6C	0.61
568	6D	0.80
569	6E	0.76
570	6G	0.89
571	6H	0.56
572	6J	0.78
573	6K	0.87
574	7A	0.83
575	7B	0.49
576	7C	0.61
577	7D	0.80
578	7E	0.76
579	7G	0.89
580	7H	0.56
581	7J	0.78
582	7K	0.82
583	8A	0.83

LOT	UNIT	%COMM AREA
584	8B	0.49
585	8C	0.61
586	8D	0.92
587	8H	0.75
588	8J	0.78
589	8K	0.87
590	9A	0.55
591	9B	0.49
592	9C	0.61
593	9D	0.92
594	9H	0.75
595	9J	0.78
596	9K	0.83
597	10A	0.55
598	10B	0.49
599	10C	0.61
600	10D	0.92
601	10H	0.75
602	10J	0.78
603	10K	0.88
604	11A	0.55
605	11B	0.49
606	11C	0.61
607	11D	0.92
608	11H	0.75
609	11J	0.78
610	11K	0.83
611	12A	0.55
612	12B	0.49
613	12C	0.61
614	12D	0.92
615	12H	0.75
616	12J	0.78
617	12K	0.88
618	14A	0.55
619	14B	0.49
620	14C	0.61
621	14D	0.92
622	14H	0.75
623	14J	0.78
624	14K	0.83
625	15A	0.55
626	15B	0.49
627	15C	0.61
628	15D	0.92
629	15H	0.75
630	15J	0.78
631	15K	0.88
632	16A	0.55
633	16B	0.49
634	16C	0.61
635	16D	0.92
636	16H	0.75
637	16J	0.78
638	16K	0.83
639	17A	1.10
640	17D	1.36
641	17H	0.95
642	17J	0.78
643	17K	0.78
644	18A	1.10
645	18D	1.36
646	18H	0.95
647	18J	0.78
648	18K	0.87

Block 3789
Sheet 5

Revised 2002

229 BRANNAN ST.
A CONDOMINIUM

LOT	UNIT	%COMM AREA
649	2A	1.01
650	2B	0.63
651	2C	0.79
652	2D	0.89
653	2E	0.79
654	2G	0.67
655	2H	0.73
656	2J	0.65
657	3A	1.12
658	3C	1.04
659	3D	0.89
660	3E	0.78
661	3G	0.66
662	3H	0.74
663	3J	1.19
664	4A	1.12
665	4C	1.04
666	4D	0.89
667	4E	0.80
668	4G	0.66
669	4H	0.73
670	4J	1.19
671	5A	1.12
672	5C	1.04
673	5D	0.89
674	5E	0.80
675	5G	0.66
676	5H	0.73
677	5J	1.19
678	6A	1.12
679	6C	1.04
680	6D	0.89
681	6E	0.80
682	6G	0.66
683	6H	0.73
684	6J	1.19
685	7A	1.12
686	7C	1.04
687	7D	0.89
688	7E	0.80
689	7G	0.66
690	7H	0.73
691	7J	1.19
692	8A	1.24
693	8C	1.04
694	8D	0.89
695	8E	0.80
696	8G	1.14
697	8J	1.06
698	9A	1.24
699	9C	1.04

LOT	UNIT	%COMM AREA
700	9D	0.89
701	9E	0.80
702	9G	1.14
703	9J	1.06
704	10A	1.24
705	10C	1.04
706	10D	0.89
707	10E	0.80
708	10G	1.14
709	10J	1.06
710	11A	1.24
711	11C	1.04
712	11D	0.89
713	11E	0.80
714	11G	1.14
715	11J	1.06
716	12A	1.24
717	12C	1.04
718	12D	0.89
719	12E	0.80
720	12G	1.14
721	12J	1.06
722	14A	1.24
723	14C	1.04
724	14D	0.89
725	14E	0.80
726	14G	1.14
727	14J	1.06
728	15A	1.24
729	15C	1.04
730	15D	0.89
731	15E	0.80
732	15G	1.14
733	15J	1.06
734	16A	1.24
735	16C	1.04
736	16D	0.89
737	16E	0.80
738	16G	1.14
739	16J	1.06
740	17A	1.24
741	17C	1.04
742	17D	0.89
743	17E	0.80
744	17G	1.14
745	17J	1.06
746	18A	1.24
747	18C	1.04
748	18D	0.89
749	18E	0.80
750	18G	1.14
751	18J	1.06

Block 3789

516-2-689/2x1

THE BRANNAN
TOWER "C"
239 BRANNAN STREET
A CONDOMINIUM

Block 3789

Sheet 6

Block3789 Lot517 into lots752to856 for 2003 roll

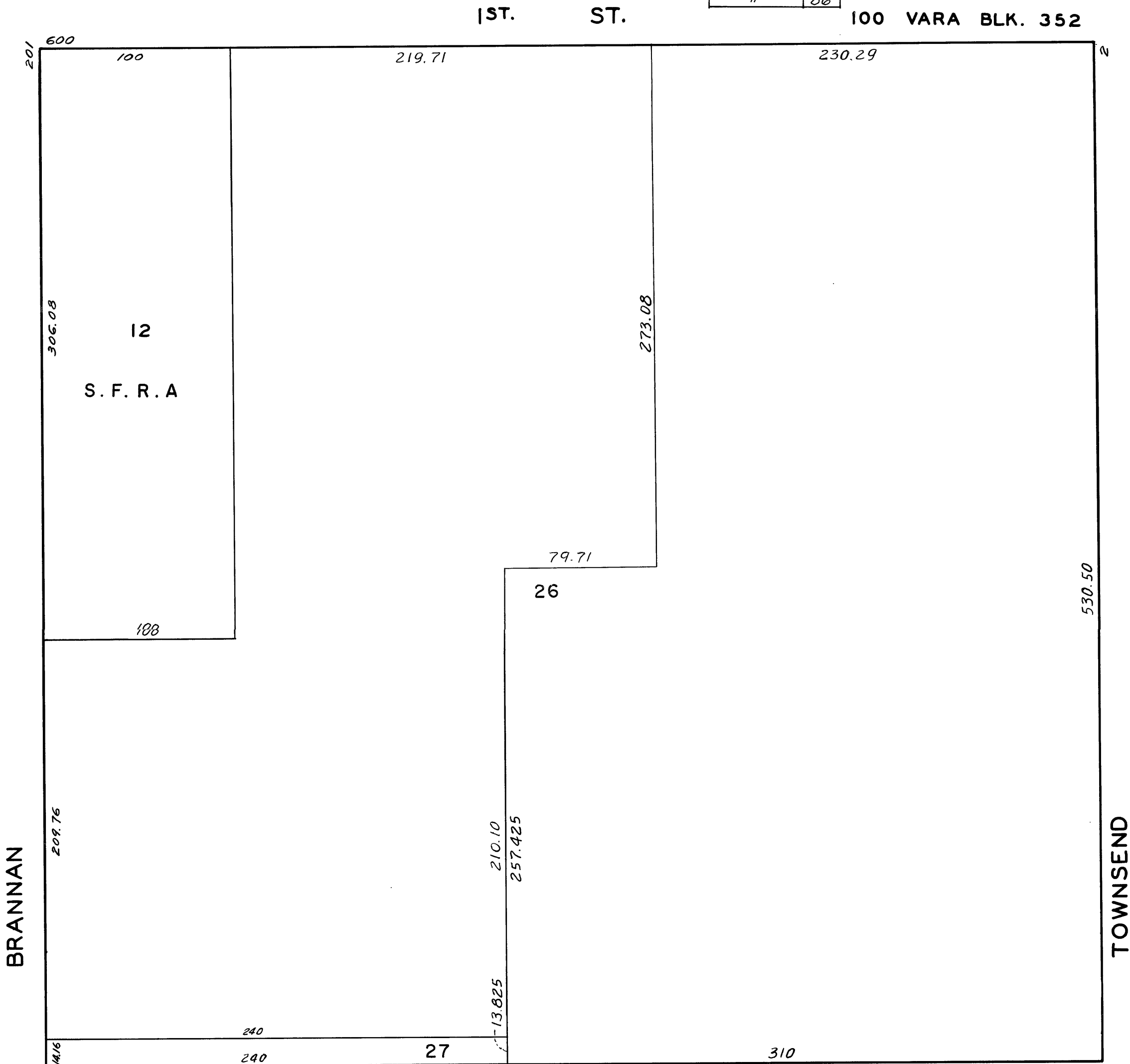
LOT	UNIT	% COMM. AREA
752	1	1.22
753	2	1.66
754	2A	0.87
755	2B	0.58
756	2C	0.75
757	2D	0.88
758	2E	0.85
759	2G	0.66
760	2H	0.66
761	2J	0.63
762	3A	0.96
763	3C	0.99
764	3D	0.88
765	3E	0.85
766	3G	0.68
767	3H	0.73
768	3J	1.14
769	4A	0.96
770	4C	0.99
771	4D	0.88
772	4E	0.85
773	4G	0.68
774	4H	0.73
775	4J	1.14
776	5A	0.96
777	5C	0.99
778	5D	0.88
779	5E	0.85
780	5G	0.68
781	5H	0.73
782	5J	1.14
783	6A	0.96
784	6C	0.99
785	6D	0.88
786	6E	0.85
787	6G	0.68
788	6H	0.73
789	6J	1.14
790	7A	0.96
791	7C	0.99
792	7D	0.88
793	7E	0.85
794	7G	0.68
795	7H	0.73
796	7J	1.14
797	8A	1.12
798	8C	0.99
799	8D	0.88
800	8E	0.85
801	8G	1.13
802	8J	1.04
803	9A	1.12
804	9C	0.99
805	9D	0.88
806	9E	0.85

LOT	UNIT	% COMM. AREA
807	9G	1.13
808	9J	1.04
809	10A	1.12
810	10C	0.99
811	10D	0.88
812	10E	0.85
813	10G	1.13
814	10J	1.04
815	11A	1.12
816	11C	0.99
817	11D	0.88
818	11E	0.85
819	11G	1.13
820	11J	1.04
821	12A	1.12
822	12C	0.99
823	12D	0.88
824	12E	0.85
825	12G	1.13
826	12J	1.04
827	14A	1.12
828	14C	0.99
829	14D	0.88
830	14E	0.85
831	14G	1.13
832	14J	1.04
833	15A	1.12
834	15C	0.99
835	15D	0.88
836	15E	0.85
837	15G	1.13
838	15J	1.04
839	16A	1.12
840	16C	0.99
841	16D	0.88
842	16E	0.85
843	16G	1.13
844	16J	1.04
845	17A	1.12
846	17C	0.99
847	17D	0.88
848	17E	0.85
849	17G	1.13
850	17J	1.04
851	18A	1.11
852	18C	0.99
853	18D	0.88
854	18E	0.85
855	18G	1.13
856	18J	1.04

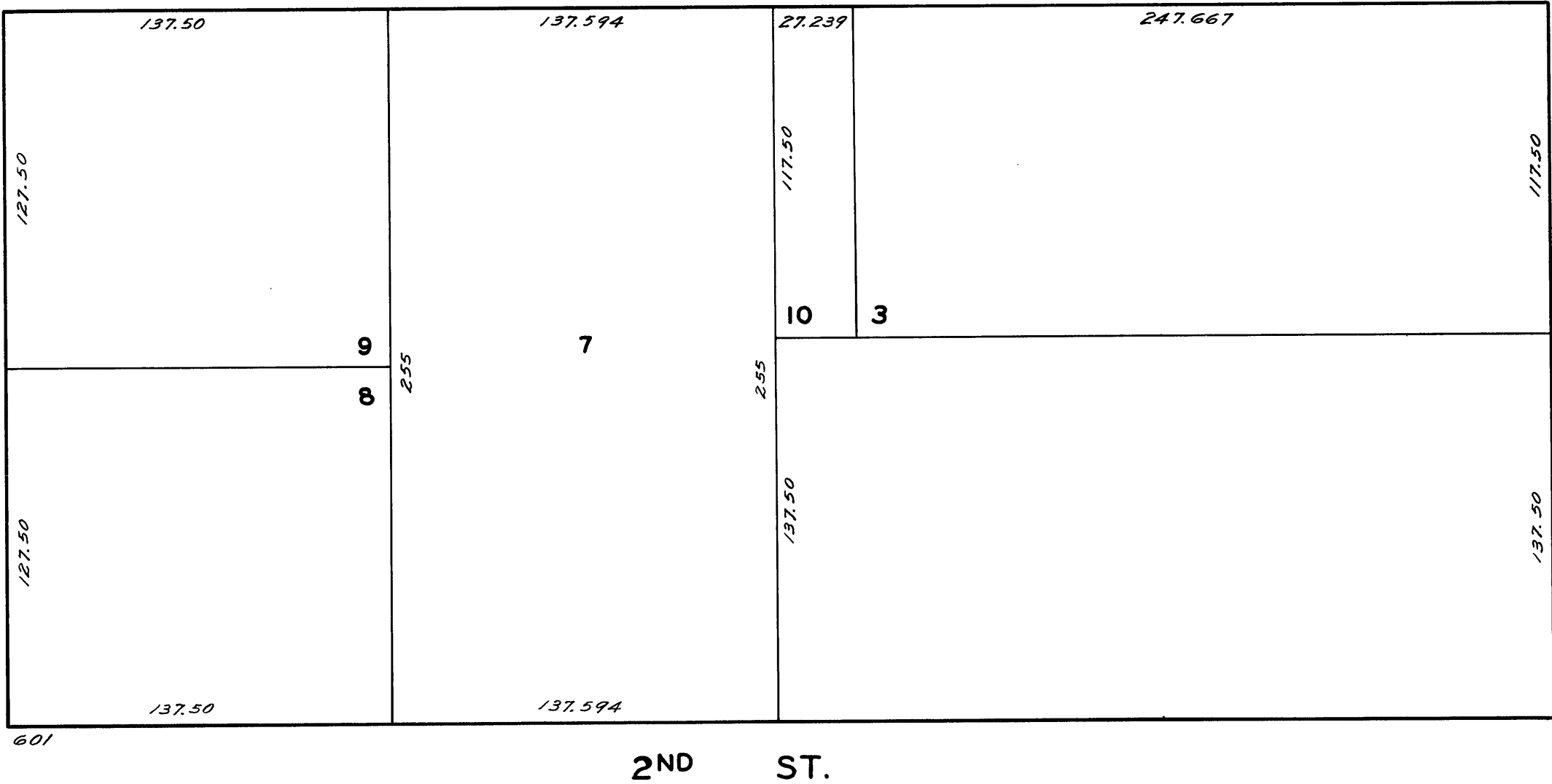
LOTS	MERGED
LOTS 2E, 2D	INTO LOT 1B -1943
" 6	" 5 - "
" 2 & 2A	" 1 - "
" 2B, 2C	" 1A - "
" 1D	" 1B - '56

REVISED	'61
"	'66
"	'67
"	'68
"	'71
"	'75
"	'86

3789



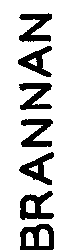
COLIN P. KELLY JR.



lot857 into lots858/971 for 2005 roll
lots20 &25 into lots 510&511 for 1997 roll
lot511 into lots 444/509 for 1997 roll
lots12 & 510 into lot514 for 2000 roll
lot514 into lots515/517 for 2001 roll
lot515 into lots518to648 for 2001 roll
lot516 into lots649to751 for 2002 roll
lot517 into lots752to856 for 2003 roll
lots4&5 into lot857 for 2004 roll

Revised 2002 Revised 2003
Revised 1997 Revised 2005
Revised 2000 SHEET 1
Revised 2001
3789 Revised 2010
100 VARA BLK. 352

lot3 into lots 972/974 for 2010 roll






TOWNSEND

40

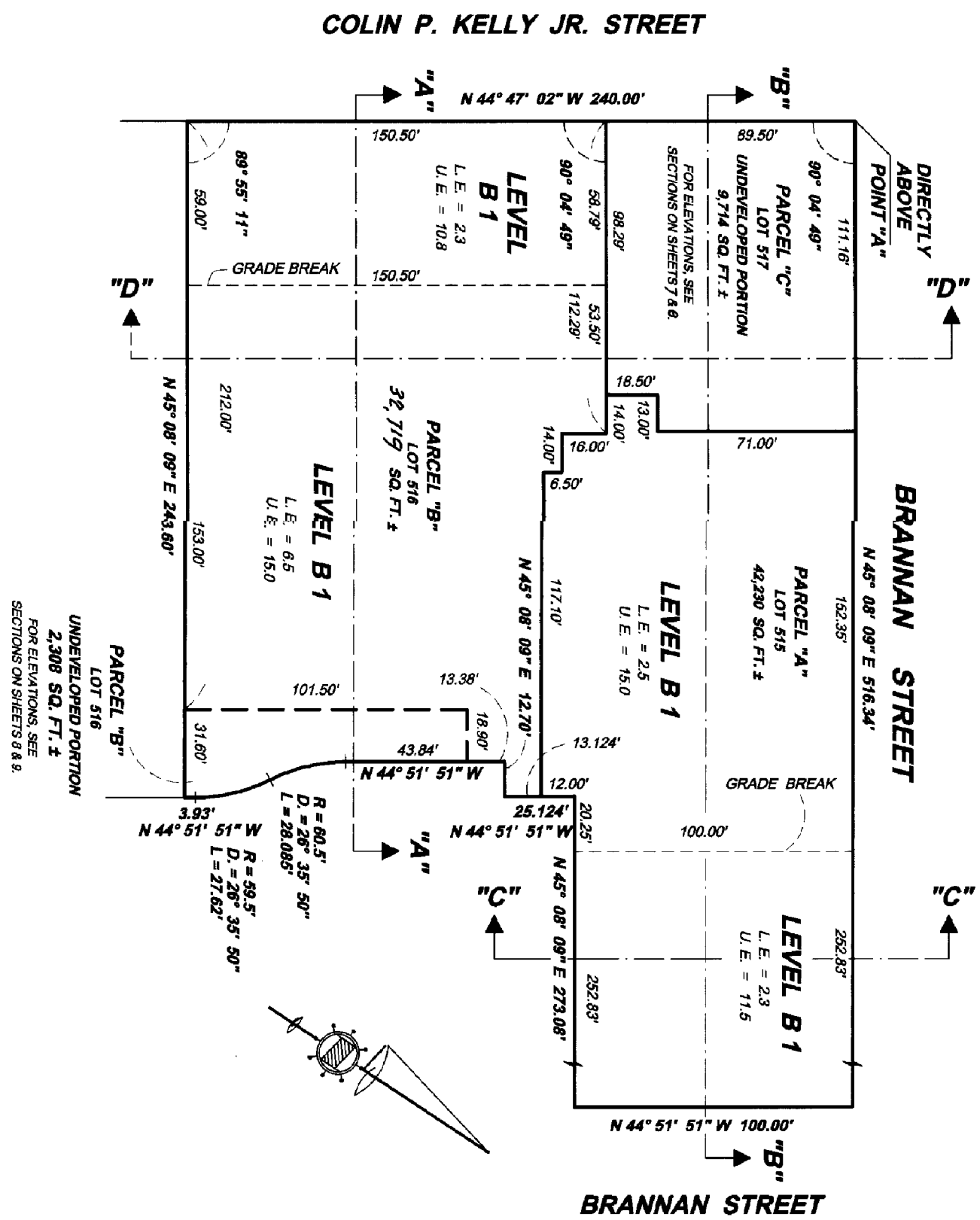


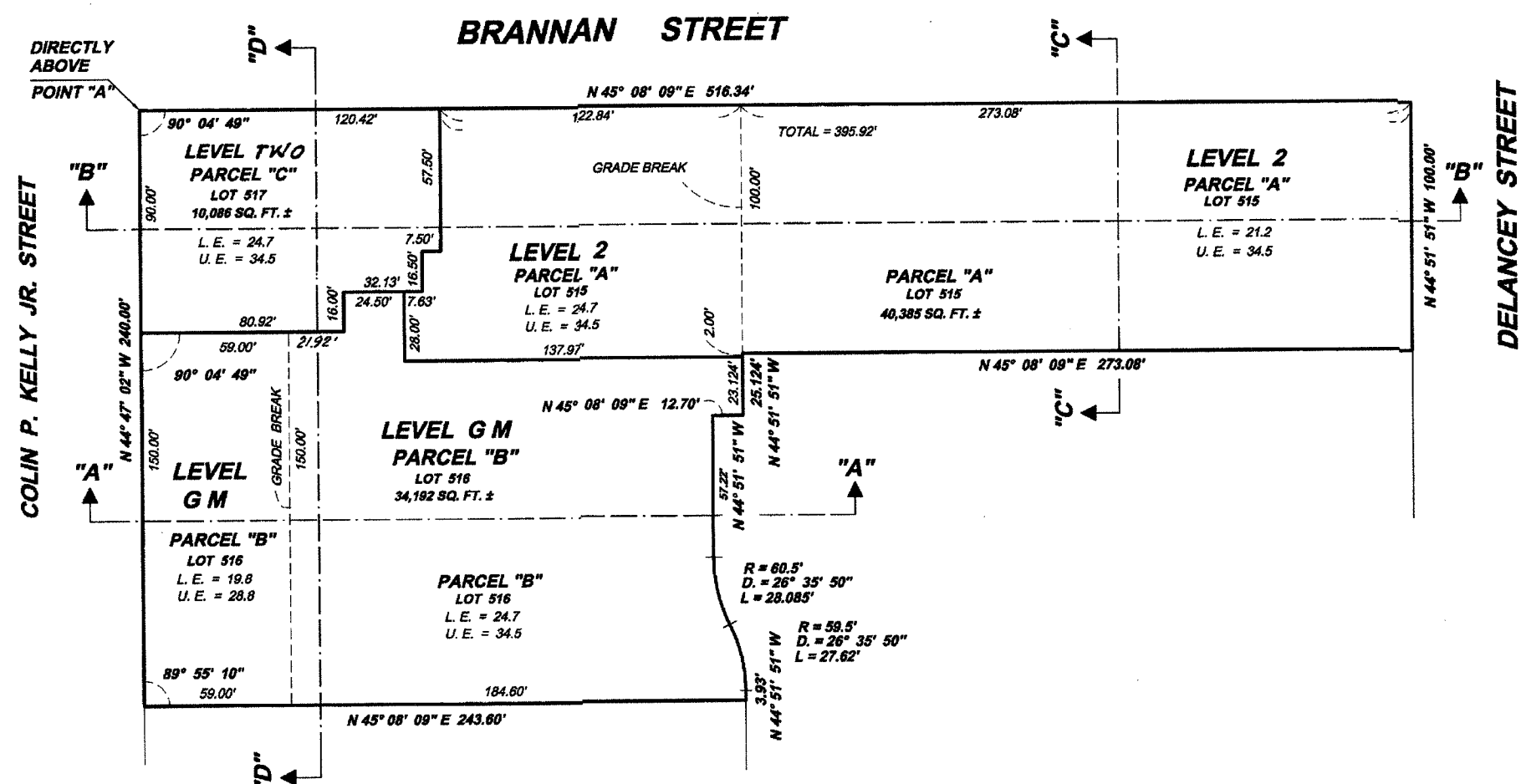
2ND ST.



 LOT LINE
 GRADE BREAK
 UNDEVELOPED AREA LINE

NO.	LOT NO.	PARCEL NO.
1	515	A
2	516	B
3	517	C





BLOCK3789
SHEET 4

Revised 2001

219 BRANNAN STREET

2001 Roll

LOT	UNIT	%COMM AREA
518	A	2.66
519	1B	0.60
520	1C	0.60
521	1D	0.58
522	1E	0.35
523	1F	0.86
524	1G	0.71
525	1H	0.61
526	1J	0.56
527	1K	0.70
528	2B	0.72
529	2C	0.64
530	2D	0.82
531	2E	0.32
532	2F	0.90
533	2G	1.15
534	2H	0.82
535	2J	1.05
536	3A	0.83
537	3B	0.49
538	3C	0.61
539	3D	0.80
540	3E	0.32
541	3F	0.90
542	3G	1.15
543	3H	0.82
544	3J	1.05
545	3K	1.10
546	4A	0.83
547	4B	0.49
548	4C	0.61
549	4D	0.80
550	4E	0.32
551	4F	0.90
552	4G	1.15
553	4H	0.82
554	4J	0.78
555	4K	0.87
556	5A	0.83
557	5B	0.49
558	5C	0.61
559	5D	0.80
560	5E	0.76
561	5G	0.89
562	5H	0.56
563	5J	0.78
564	5K	0.87
565	6A	0.83
566	6B	0.49
567	6C	0.61
568	6D	0.80
569	6E	0.76
570	6G	0.89
571	6H	0.56
572	6J	0.78
573	6K	0.87
574	7A	0.83
575	7B	0.49
576	7C	0.61
577	7D	0.80
578	7E	0.76
579	7G	0.89
580	7H	0.56
581	7J	0.78
582	7K	0.82
583	8A	0.83

LOT	UNIT	%COMM AREA
584	8B	0.49
585	8C	0.61
586	8D	0.92
587	8H	0.75
588	8J	0.78
589	8K	0.87
590	9A	0.55
591	9B	0.49
592	9C	0.61
593	9D	0.92
594	9H	0.75
595	9J	0.78
596	9K	0.83
597	10A	0.55
598	10B	0.49
599	10C	0.61
600	10D	0.92
601	10H	0.75
602	10J	0.78
603	10K	0.88
604	11A	0.55
605	11B	0.49
606	11C	0.61
607	11D	0.92
608	11H	0.75
609	11J	0.78
610	11K	0.83
611	12A	0.55
612	12B	0.49
613	12C	0.61
614	12D	0.92
615	12H	0.75
616	12J	0.78
617	12K	0.88
618	14A	0.55
619	14B	0.49
620	14C	0.61
621	14D	0.92
622	14H	0.75
623	14J	0.78
624	14K	0.83
625	15A	0.55
626	15B	0.49
627	15C	0.61
628	15D	0.92
629	15H	0.75
630	15J	0.78
631	15K	0.88
632	16A	0.55
633	16B	0.49
634	16C	0.61
635	16D	0.92
636	16H	0.75
637	16J	0.78
638	16K	0.83
639	17A	1.10
640	17D	1.36
641	17H	0.95
642	17J	0.78
643	17K	0.78
644	18A	1.10
645	18D	1.36
646	18H	0.95
647	18J	0.78
648	18K	0.87

Block 3789
Sheet 5

Revised 2002

229 BRANNAN ST.
A CONDOMINIUM

LOT	UNIT	%COMM AREA
649	2A	1.01
650	2B	0.63
651	2C	0.79
652	2D	0.89
653	2E	0.79
654	2G	0.67
655	2H	0.73
656	2J	0.65
657	3A	1.12
658	3C	1.04
659	3D	0.89
660	3E	0.78
661	3G	0.66
662	3H	0.74
663	3J	1.19
664	4A	1.12
665	4C	1.04
666	4D	0.89
667	4E	0.80
668	4G	0.66
669	4H	0.73
670	4J	1.19
671	5A	1.12
672	5C	1.04
673	5D	0.89
674	5E	0.80
675	5G	0.66
676	5H	0.73
677	5J	1.19
678	6A	1.12
679	6C	1.04
680	6D	0.89
681	6E	0.80
682	6G	0.66
683	6H	0.73
684	6J	1.19
685	7A	1.12
686	7C	1.04
687	7D	0.89
688	7E	0.80
689	7G	0.66
690	7H	0.73
691	7J	1.19
692	8A	1.24
693	8C	1.04
694	8D	0.89
695	8E	0.80
696	8G	1.14
697	8J	1.06
698	9A	1.24
699	9C	1.04

LOT	UNIT	%COMM AREA
700	9D	0.89
701	9E	0.80
702	9G	1.14
703	9J	1.06
704	10A	1.24
705	10C	1.04
706	10D	0.89
707	10E	0.80
708	10G	1.14
709	10J	1.06
710	11A	1.24
711	11C	1.04
712	11D	0.89
713	11E	0.80
714	11G	1.14
715	11J	1.06
716	12A	1.24
717	12C	1.04
718	12D	0.89
719	12E	0.80
720	12G	1.14
721	12J	1.06
722	14A	1.24
723	14C	1.04
724	14D	0.89
725	14E	0.80
726	14G	1.14
727	14J	1.06
728	15A	1.24
729	15C	1.04
730	15D	0.89
731	15E	0.80
732	15G	1.14
733	15J	1.06
734	16A	1.24
735	16C	1.04
736	16D	0.89
737	16E	0.80
738	16G	1.14
739	16J	1.06
740	17A	1.24
741	17C	1.04
742	17D	0.89
743	17E	0.80
744	17G	1.14
745	17J	1.06
746	18A	1.24
747	18C	1.04
748	18D	0.89
749	18E	0.80
750	18G	1.14
751	18J	1.06

Block 3789

516-2-689/2x1

THE BRANNAN
TOWER "C"
239 BRANNAN STREET
A CONDOMINIUM

Block 3789

Sheet 6

Block3789 Lot517 into lots752to856 for 2003 roll

LOT	UNIT	% COMM. AREA
752	1	1.22
753	2	1.66
754	2A	0.87
755	2B	0.58
756	2C	0.75
757	2D	0.88
758	2E	0.85
759	2G	0.66
760	2H	0.66
761	2J	0.63
762	3A	0.96
763	3C	0.99
764	3D	0.88
765	3E	0.85
766	3G	0.68
767	3H	0.73
768	3J	1.14
769	4A	0.96
770	4C	0.99
771	4D	0.88
772	4E	0.85
773	4G	0.68
774	4H	0.73
775	4J	1.14
776	5A	0.96
777	5C	0.99
778	5D	0.88
779	5E	0.85
780	5G	0.68
781	5H	0.73
782	5J	1.14
783	6A	0.96
784	6C	0.99
785	6D	0.88
786	6E	0.85
787	6G	0.68
788	6H	0.73
789	6J	1.14
790	7A	0.96
791	7C	0.99
792	7D	0.88
793	7E	0.85
794	7G	0.68
795	7H	0.73
796	7J	1.14
797	8A	1.12
798	8C	0.99
799	8D	0.88
800	8E	0.85
801	8G	1.13
802	8J	1.04
803	9A	1.12
804	9C	0.99
805	9D	0.88
806	9E	0.85

LOT	UNIT	% COMM. AREA
807	9G	1.13
808	9J	1.04
809	10A	1.12
810	10C	0.99
811	10D	0.88
812	10E	0.85
813	10G	1.13
814	10J	1.04
815	11A	1.12
816	11C	0.99
817	11D	0.88
818	11E	0.85
819	11G	1.13
820	11J	1.04
821	12A	1.12
822	12C	0.99
823	12D	0.88
824	12E	0.85
825	12G	1.13
826	12J	1.04
827	14A	1.12
828	14C	0.99
829	14D	0.88
830	14E	0.85
831	14G	1.13
832	14J	1.04
833	15A	1.12
834	15C	0.99
835	15D	0.88
836	15E	0.85
837	15G	1.13
838	15J	1.04
839	16A	1.12
840	16C	0.99
841	16D	0.88
842	16E	0.85
843	16G	1.13
844	16J	1.04
845	17A	1.12
846	17C	0.99
847	17D	0.88
848	17E	0.85
849	17G	1.13
850	17J	1.04
851	18A	1.11
852	18C	0.99
853	18D	0.88
854	18E	0.85
855	18G	1.13
856	18J	1.04