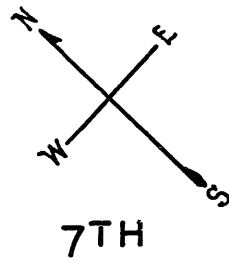


© COPYRIGHT SAN FRANCISCO  
CITY & COUNTY ASSESSOR 1995

lots4to6 into lots8&9 for 2001 roll



LOT 3 FROM S.B.E. INTO PRIVATE '90

3799

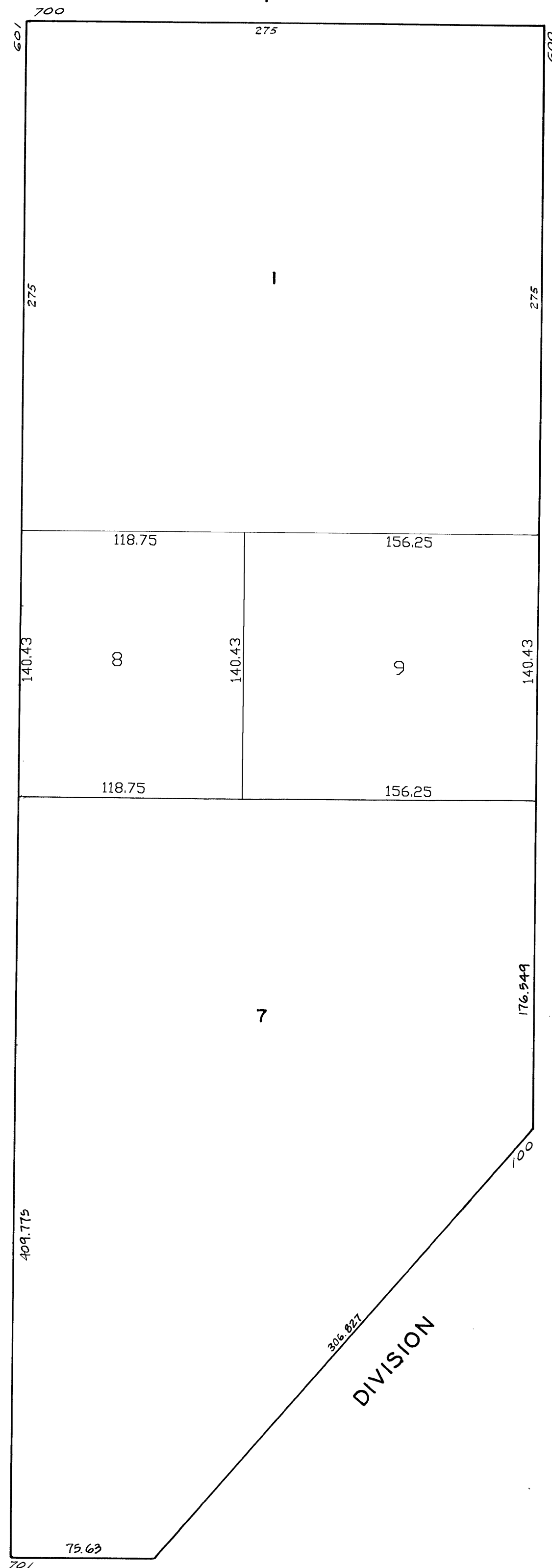
100 VARA BLK. 413

REVISED '90  
" '92

Revised 2001

TOWNSEND

KING



8TH