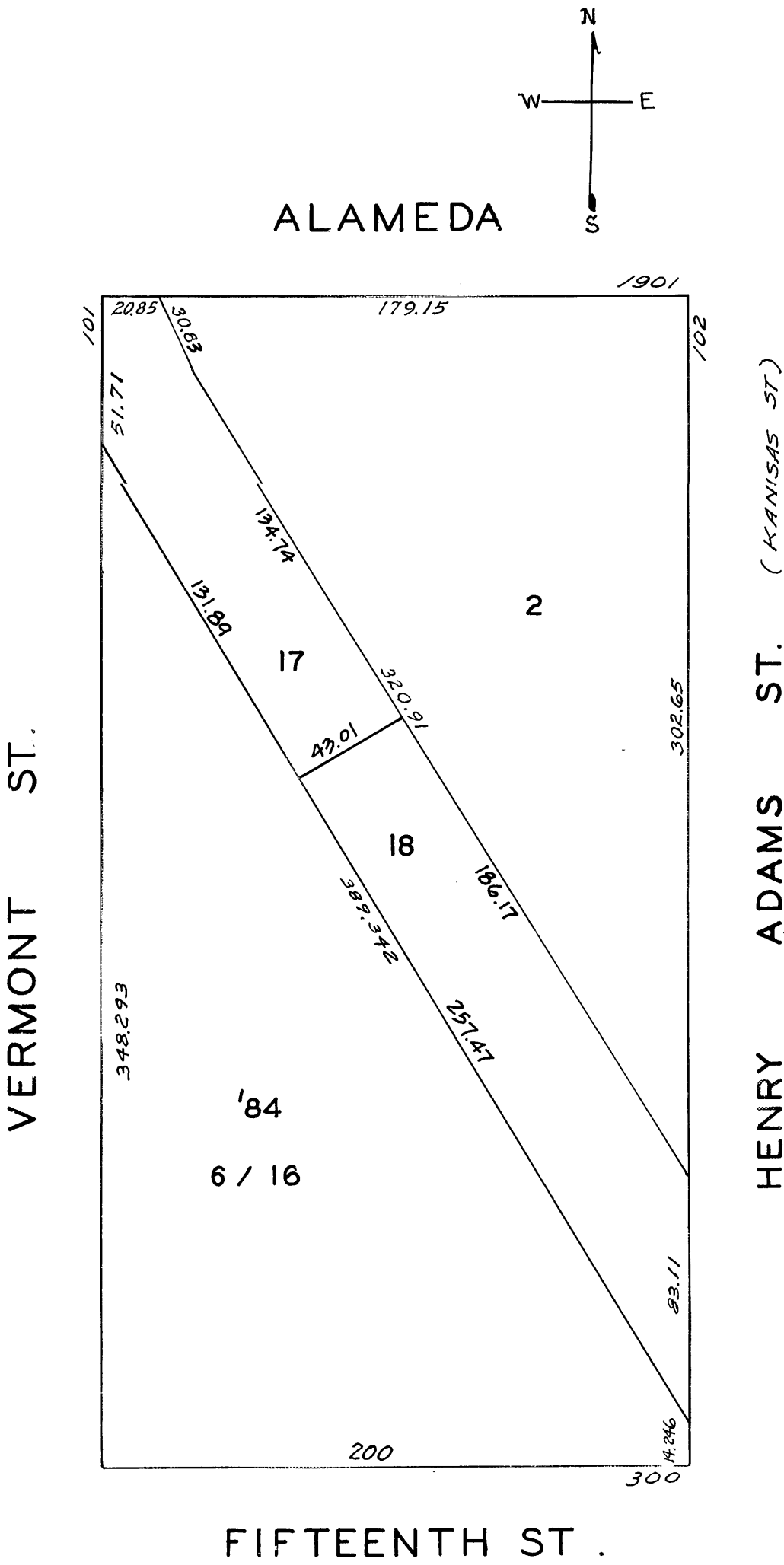


Lots 2 & 3 merged into Lot 1 "1943"
KANSAS ST. CHANGED TO HENRY ADAMS ST 10/81
LOT 4 FROM S.B.E. INTO PRIVATE - '89

REVISED '72
" '83
" '84
" '89
" '93



VERMONT CTR. SHOWROOMS
121-181 VERMONT ST., 320-380 15 TH ST.
A COMMERCIAL CONDOMINIUM

LOT NO.	UNIT NO.	% COMMON AREA
6	1	10.5
7	2	7.4
8	3	6.2
9	4	6.3
10	5	9.4
11	6	8.2
12	7	8.2
13	8	10.3
14	9	12.3
15	10	11.3
16	11	9.9