

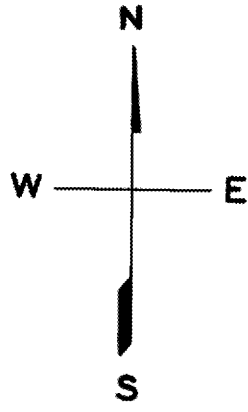
3924

LOTS MERGED

Lot 2 merged into Lot 1. "1943"

LOT 4 FROM S.B.E. INTO PRIVATE - '91 ROLL

lots 4&5 into lots 6&7 for 2005 roll
lot 7 into lots 3924/8 for 2008 roll



NEW POTRERO BLK. 21

REVISED '57

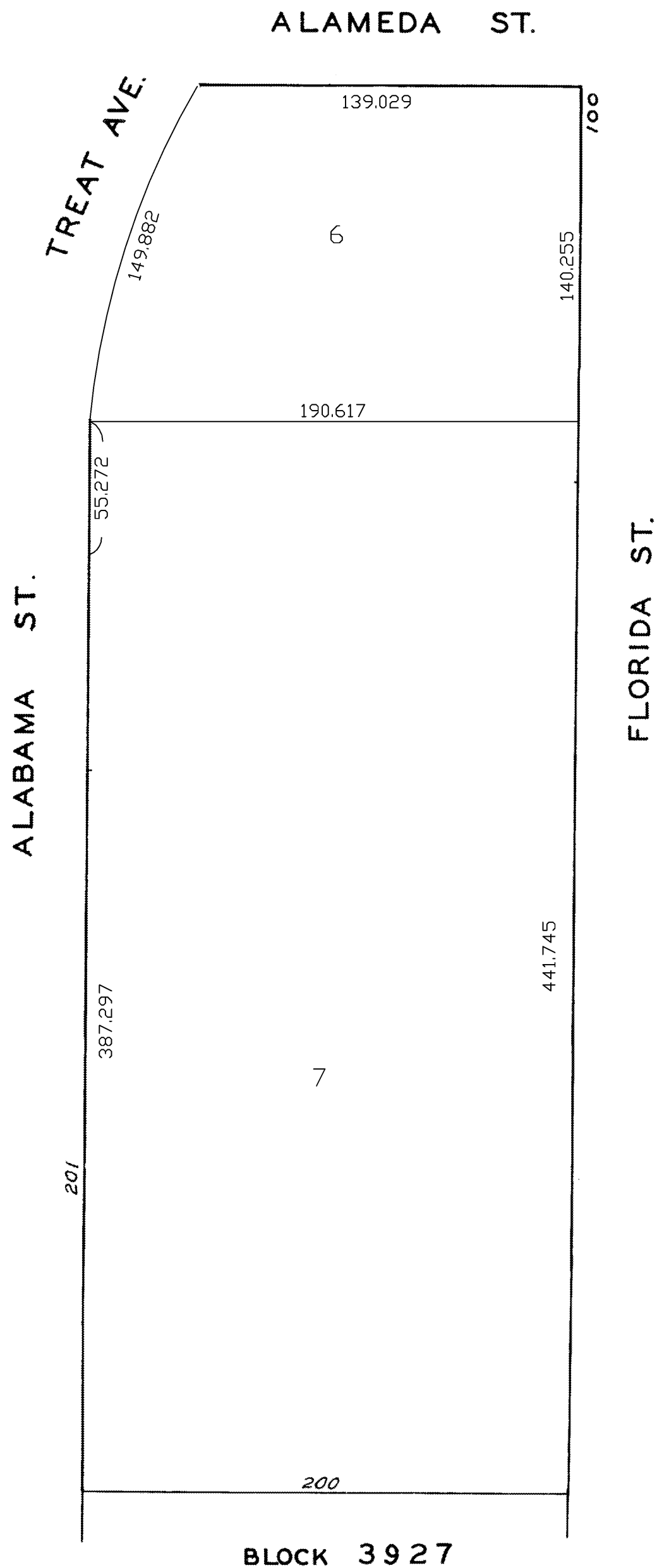
REVISED '58

" '91

Revised 2004

Revised 2005

Revised 2008



S.B.E. MAP # 872-38-1J

* PARCEL 33 ASSESSED BY S.B.E.

* PARCEL 35 ASSESSED BY US