

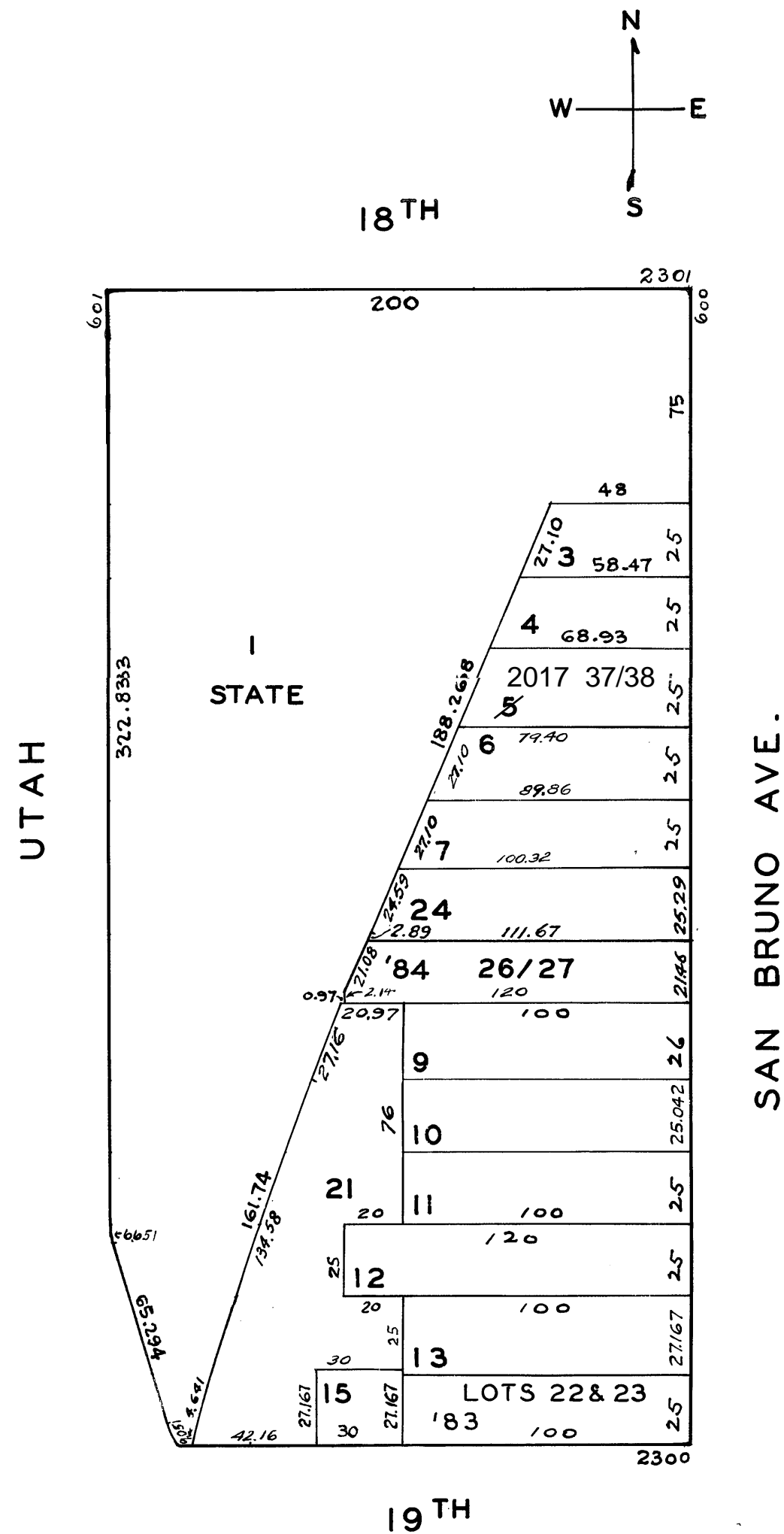
LOTS MERGED
 LOTS 15A INTO 16/16A "47"
 Lots 2/5, 16A/19 INTO Lot 1-56
 " 20/32 " " 1-56
 Lot 5 into lots 37 & 38 for 2017 roll

© COPYRIGHT SAN FRANCISCO
 CITY & COUNTY ASSESSOR 1995

26
 4027

NEW POTRERO BLK. 92

REVISED '73
 " '82
 " '83
 " '84
 REVISED 2017



2310-19TH STREET		
A CONDOMINIUM		
LOT NO.	UNIT NO.	% COMMON AREA
22	2310	50
23	636	50

620-622 SAN BRUNO AVE.		
A CONDOMINIUM		
LOT NO.	UNIT NO.	% COMMON AREA
26	620	43.58
27	622	56.42