

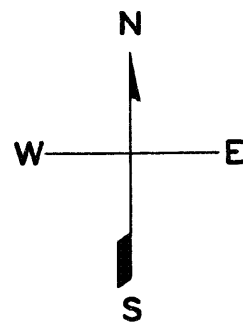
LOTS MERGED  
LOT 16 INTO LOT 15-1946  
" 17 1/2 " " 17 - "  
" 28 & 29 " " 27-1952

© COPYRIGHT SAN FRANCISCO  
CITY & COUNTY ASSESSOR 1995

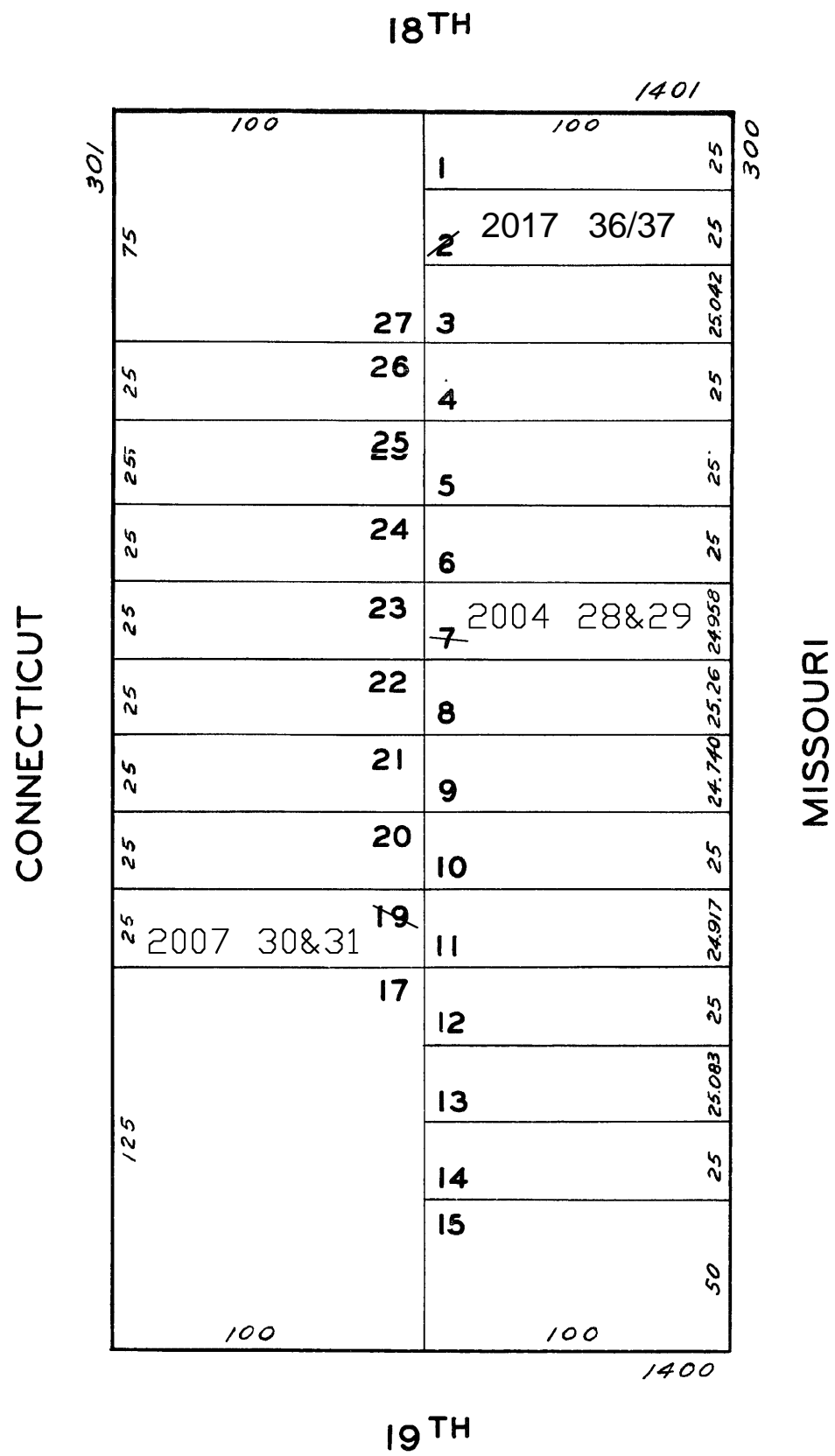
lot 7 into lots 28 & 29 for 2004 roll  
lot 19 into lots 30 & 31 for 2007 roll  
Lot 2 into lots 36 & 37 for 2017 roll

4036

NEW POTRERO BLK. 245



Revised 2004  
Revised 2007  
REVISED 2017



336-338 MISSOURI ST.			
A CONDOMINIUM			
LOT	UNIT	% COMM.	AREA
28	1	48.31	
29	2	51.69	

363-365 CONNECTICUT ST.			
A CONDOMINIUM			
LOT	UNIT	% COMM.	AREA
30	363	40	
31	365	60	