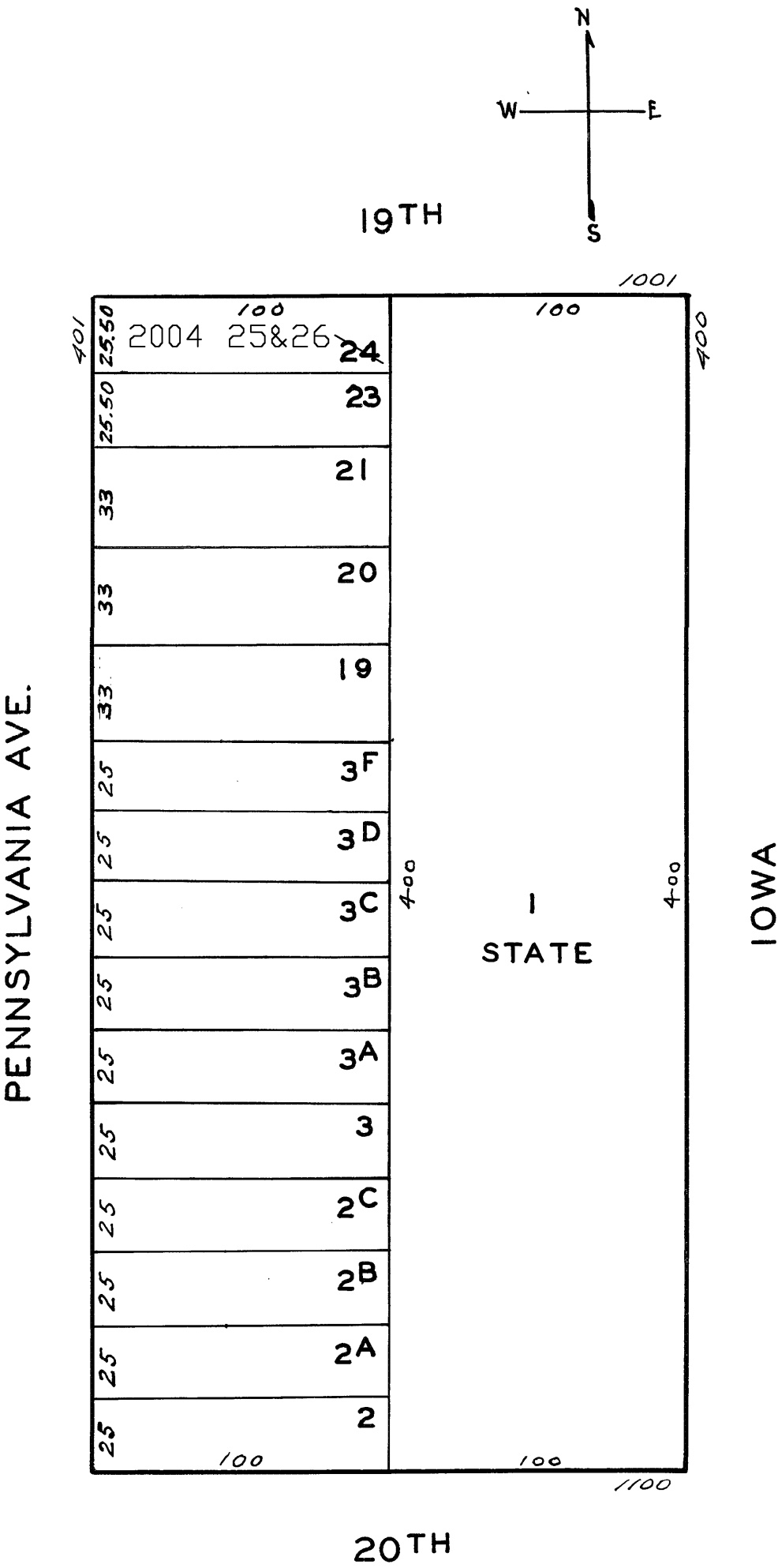


LOTS MERGED
LOT 3E INTO LOT 4 - 1954
lot24 into lots25&26 for 2004 roll

REVISED 1977
" '78
Revised 2004



1091-1093 19TH ST.
A CONDOMINIUM

LOT	UNIT	% COMM.	AREA
25	1	42.67	
26	2	57.33	