

4083

NEW POTRERO BLK. 12

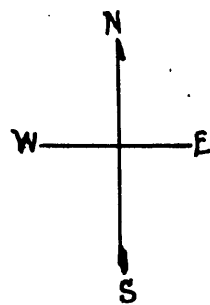
© COPYRIGHT SAN FRANCISCO
CITY & COUNTY ASSESSOR 1995

REVISED '65

" '93

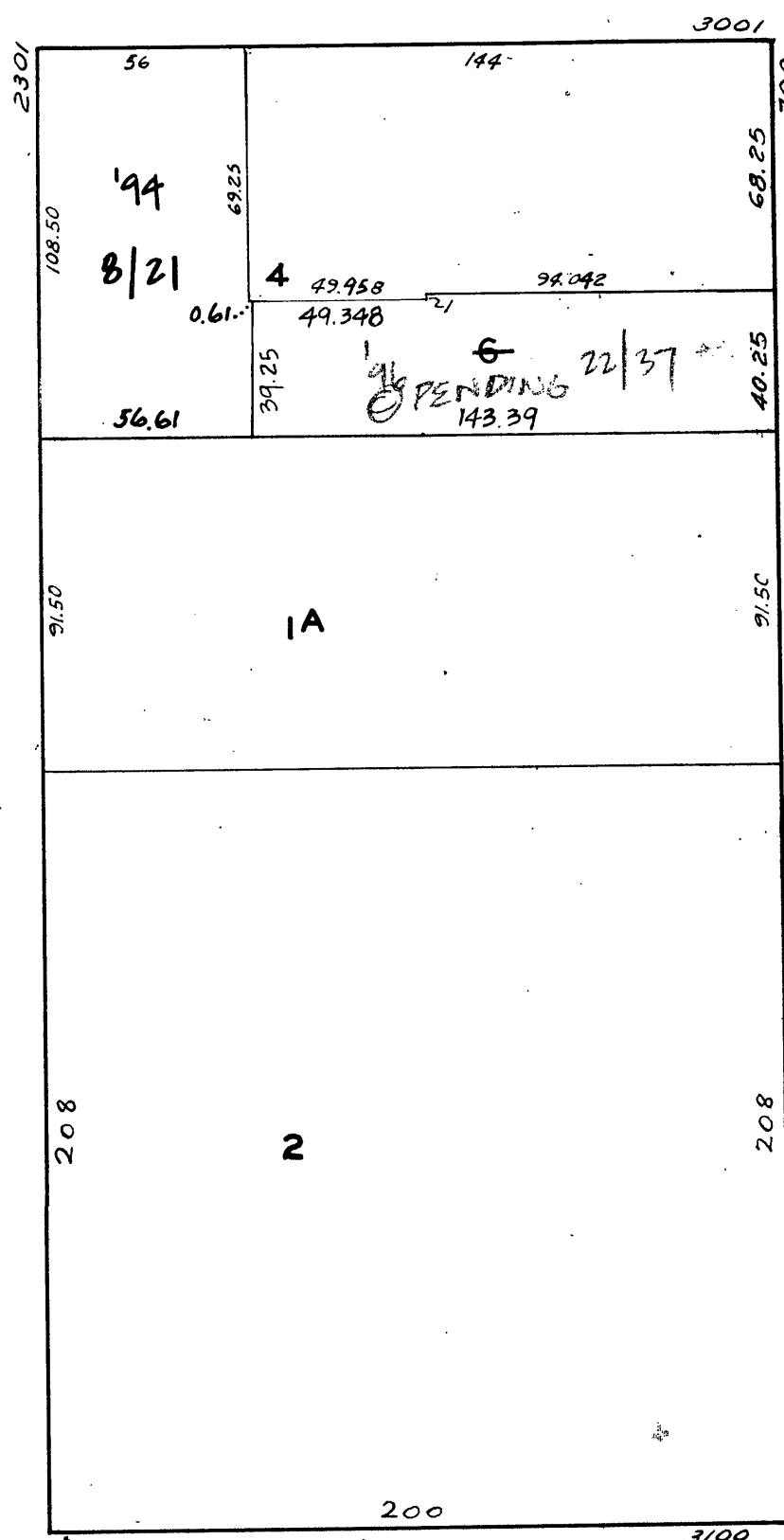
" '94

" '96



19TH

HARRISON



20TH

ALABAMA

728 ALABAMA ST.

A CONDOMINIUM

LOT NO.	UNIT NO.	% COMMON AREA
22	101	4.912
23	102	7.762
24	103	7.360
25	104	4.751
26	105	4.394
27	106	5.294
28	201	8.003
29	202	6.425
30	203	6.942
31	204	6.997
32	205	6.633
33	301	6.413
34	302	6.480
35	303	6.000
36	304	6.120
37	305	5.515

2301 HARRISON ST.

A CONDOMINIUM

LOT	UNIT	% COMM. AREA
8	101	9.72
9	102	7.62
10	201	5.74
11	202	9.41
12	203	6.34
13	204	6.83
14	205	7.12
15	206	6.41
16	301	5.80
17	302	9.16
18	303	6.00
19	304	6.47
20	305	6.97
21	306	6.41