

## 11/96

Revised 1999  
Revised 2001  
Revised 2002  
Revised 2003  
Revised 2006  
Revised 2010  
**REVISED 2016**

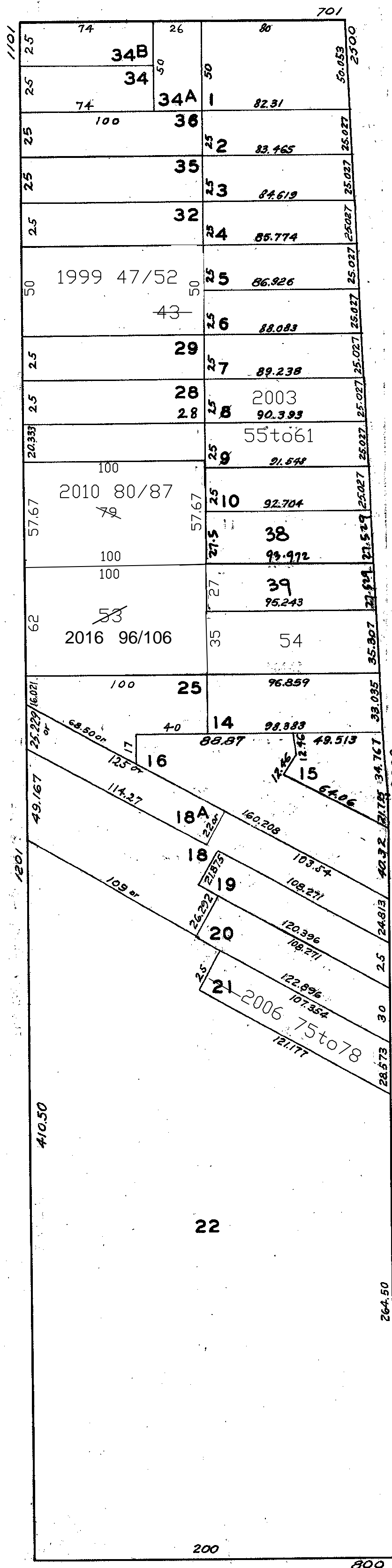
lot43 into lots47/52 for 1999 roll  
lots13&37 into lots40/42 for 2001 roll  
lot42 into lots53&54 for 2001 roll  
lot40 into lots44&46 for 2002 roll  
lot8&9 into lots 55to61 for 2003 roll  
lot21 into lots75to78 for 2006 roll  
lots41&44/46 into lot79 for 2010 roll  
lot79 into lots80/87 for 2010 roll  
Lot 53 into lots 96 to 106 for 2016 roll

<u>1121 TENNESSEE ST.</u>			
<u>A CONDOMINIUM</u>			
<u>LOT</u>	<u>UNIT</u>	<u>%</u>	<u>COMM. AREA</u>
47	1		20.77
48	2		20.84
49	3		13.74
50	4		15.77
51	5		13.43
52	6		15.45

<u>2642-2646 3RD ST.</u>		
<u>A CONDOMINIUM</u>		
<u>LOT</u>	<u>UNIT</u>	<u>% COMM. AREA</u>
75	1	19.38
76	2	49.77
77	3	15.33
78	4	15.52

<u>1155-1163 TENNESSEE ST.</u>		
<u>A CONDOMINIUM</u>		
<u>LOT</u>	<u>UNIT</u>	<u>% COMM. AREA</u>
44	1155	31.9
45	1161	31.8
46	1163	36.3

2546 3rd St.			
A CONDOMINIUM			
LOT	UNIT	% COMM.	AREA
55	comml 1		9.78
56	1		18.23
57	2		15.04
58	3		14.19
59	4		14.68
60	5		14.17
61	6		13.91



DRM