

4221A

PARKVIEW HEIGHTS

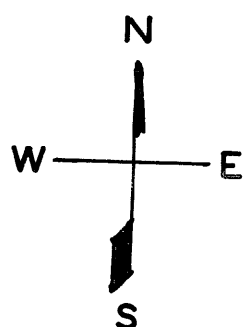
PTN OF ASSESSOR'S

BLKS: 4218, 4219

4283A & 4284A

REVISÉD 1986

NOTE: PARCELS A, B & C are Common Areas,
M is Public Utility Easement and
Access Easement.



BLK 4218

BLK 4219

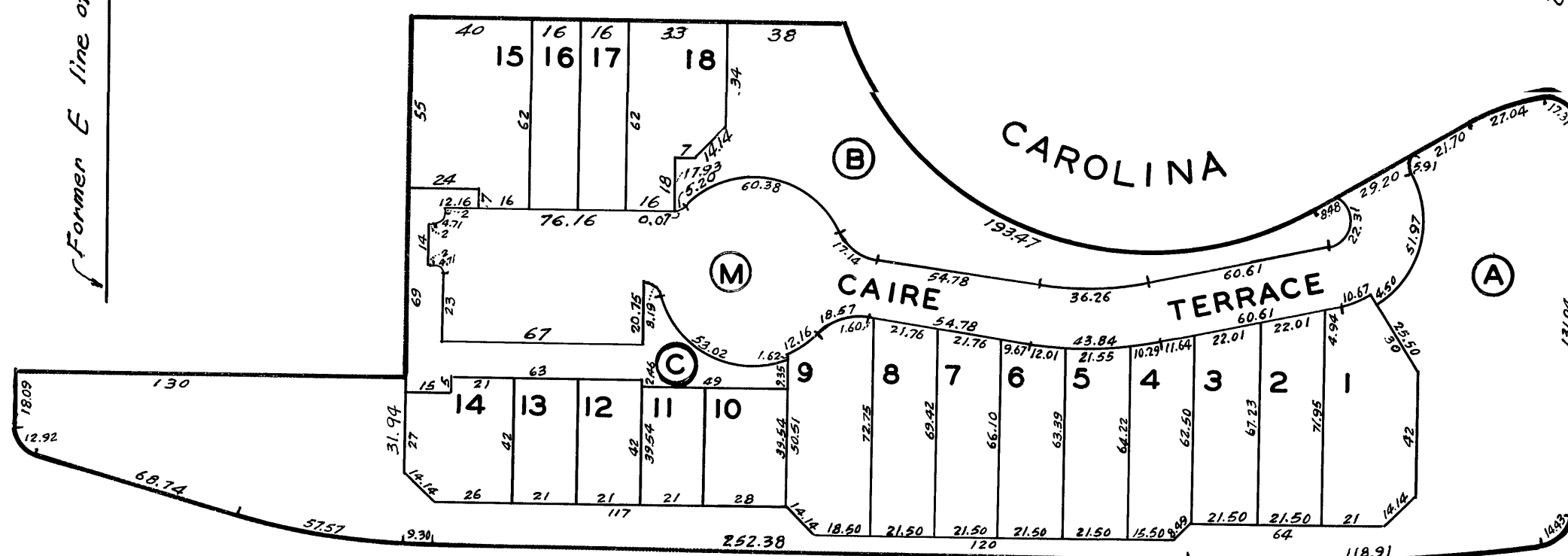
DE HARO

Former E line of DE HARO ST.

← Former E.W.
lines of
CAROLINA ST.

Former W line of WISCONSIN ST.

WISCONSIN



25 TH