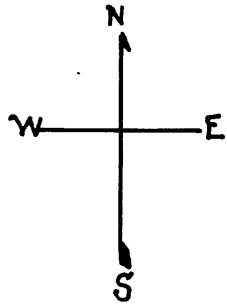


23RD ST.

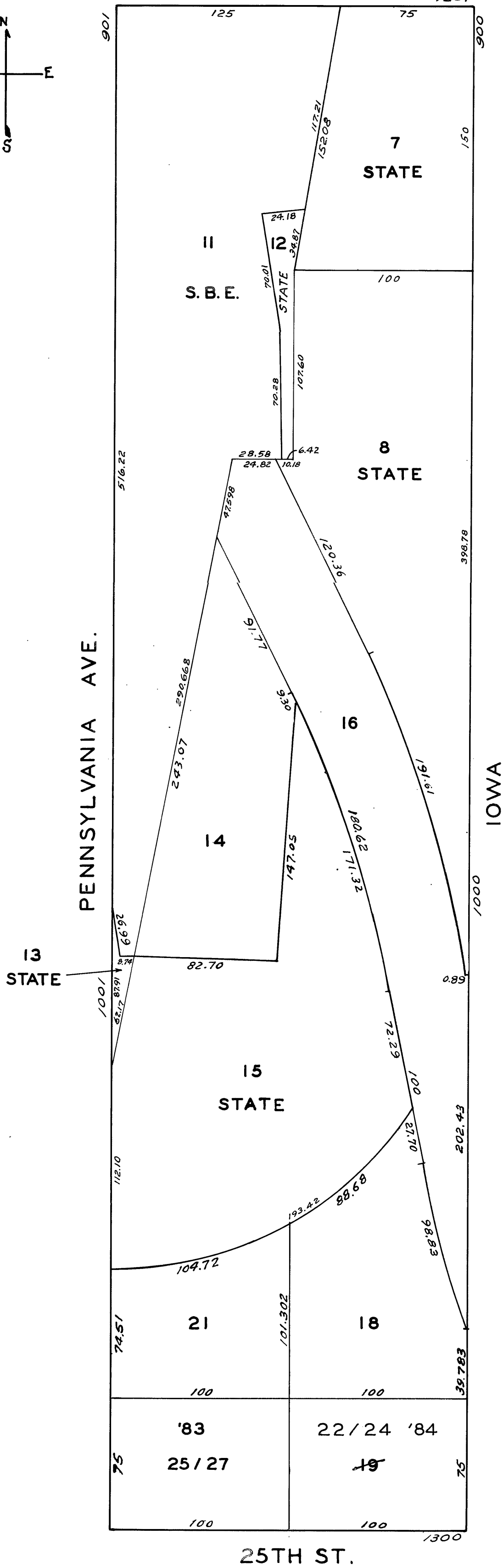
4226

NEW POTRERO BLKS. 323 &
324

REVISED '61
" '67
" '70
" '73
" '81
" '82
" '83
" '84
RE-ROLL 88



Lot 5 merged into Lot 1. "1943"
Lot 3 & 4 " " "2 "82
17 " 18/21 '82
20 " 25/27 '83
19 " 22/24 '84



1300 25TH ST.

A CONDOMINIUM

LOT UNIT % COMM AREA

22	A	33.01
23	B	33.80
24	C	33.19

1350 25TH ST.

A CONDOMINIUM

LOT UNIT % COMMON

NO.	NO.	AREA
25	A	33.01
26	B	33.80
27	C	33.19