

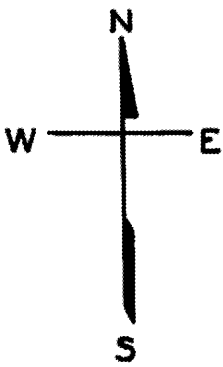
LOTS MERGED

LOTS 3/5 INTO LOT 2 - 1948  
LOTS 2&4 INTO LOT 1 - 1951  
lot16 into lots19to21 for 1998 roll  
lot19 into lots22to29 for 2000 roll  
lot21 into lots30to41 for 2003 roll  
lot20 into lots42to53 for 2003 roll

4318

NEW POTRERO BLK 331

REVISED '60  
REVISED '63  
" '65  
" '68  
" '73  
Revised 1998  
Revised 2000  
Revised 2003

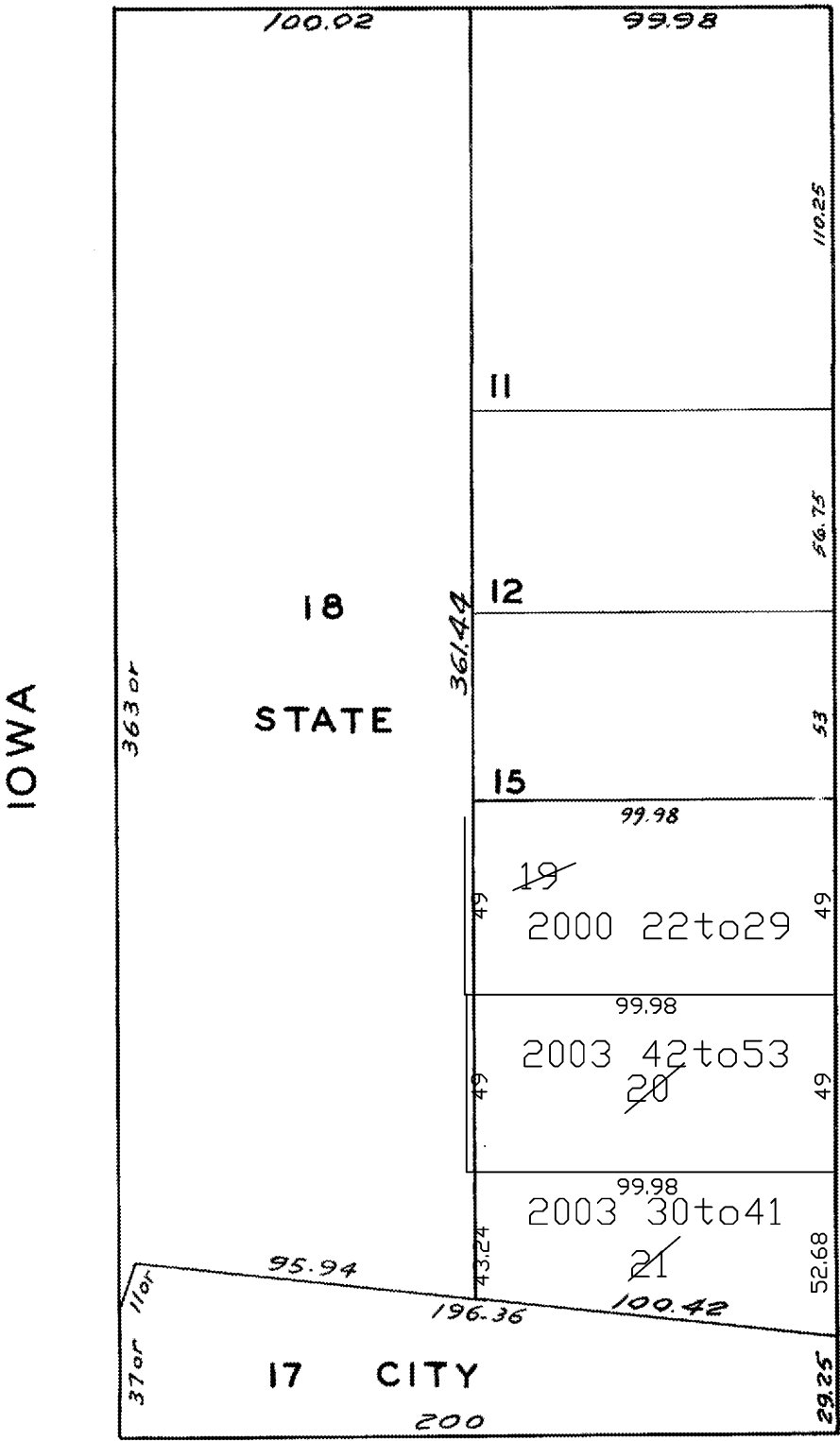


26 TH

1568 INDIANA ST. A CONDOMINIUM			
LOT	UNIT	% COMM.	AREA
22	1	12.81	
23	2	12.75	
24	3	13.96	
25	4	14.04	
26	5	11.63	
27	6	11.55	
28	7	11.59	
29	8	11.67	

1588 INDIANA ST. A CONDOMINIUM			
LOT	UNIT	% COMM.	AREA
30	1	9.34	
31	2	10.38	
32	3	10.45	
33	4	10.27	
34	5	6.20	
35	6	8.04	
36	7	8.09	
37	8	7.66	
38	9	7.63	
39	10	7.64	
40	11	6.20	
41	12	8.10	

1578 INDIANA ST. A CONDOMINIUM			
LOT	UNIT	% COMM.	AREA
42	1	8.16	
43	2	8.85	
44	3	7.34	
45	4	8.89	
46	5	8.85	
47	6	8.85	
48	7	6.88	
49	8	8.97	
50	9	8.89	
51	10	8.47	
52	11	6.88	
53	12	8.97	



ARMY