

LOT 1, & 1A FROM S.B.E. INTO CITY - '89

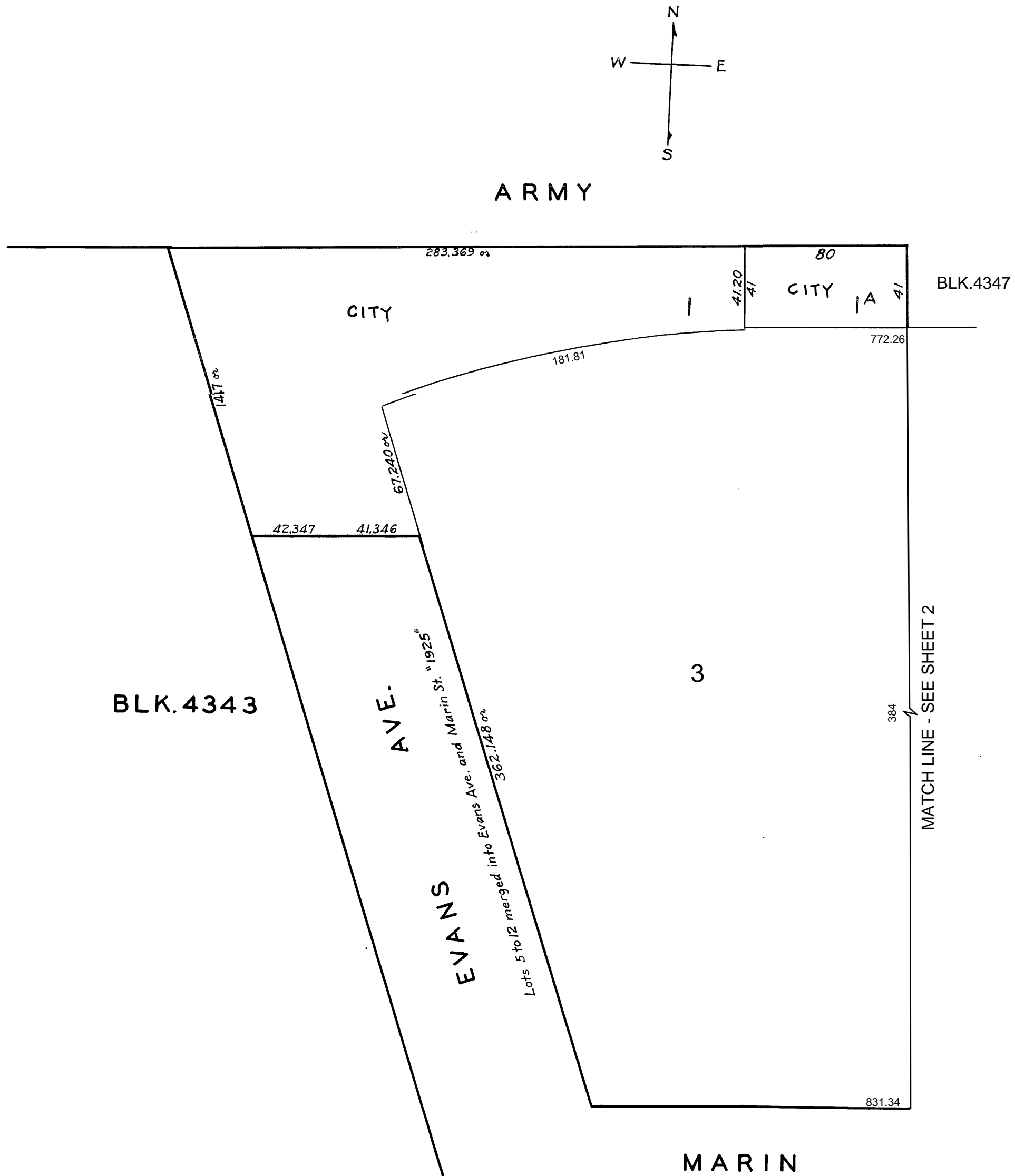
© COPYRIGHT SAN FRANCISCO
CITY & COUNTY ASSESSOR 1995

Lot 2, Block 4347-Lot10, & Block 4349-Lot 16 into Lot 3 for 2016 roll

SHT. 1
4346

NEW POTRERO BLK 221 & 222

REVISED '89
REVISED 2016



LOT 1, & 1A FROM S.B.E. INTO CITY - '89

© COPYRIGHT SAN FRANCISCO
CITY & COUNTY ASSESSOR 1995

Lot 2, Block 4347-Lot10, & Block 4349-Lot 16 into Lot 3 for 2016 roll

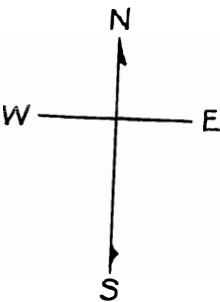
SHT. 2

4346

NEW POTRERO BLK 221&222

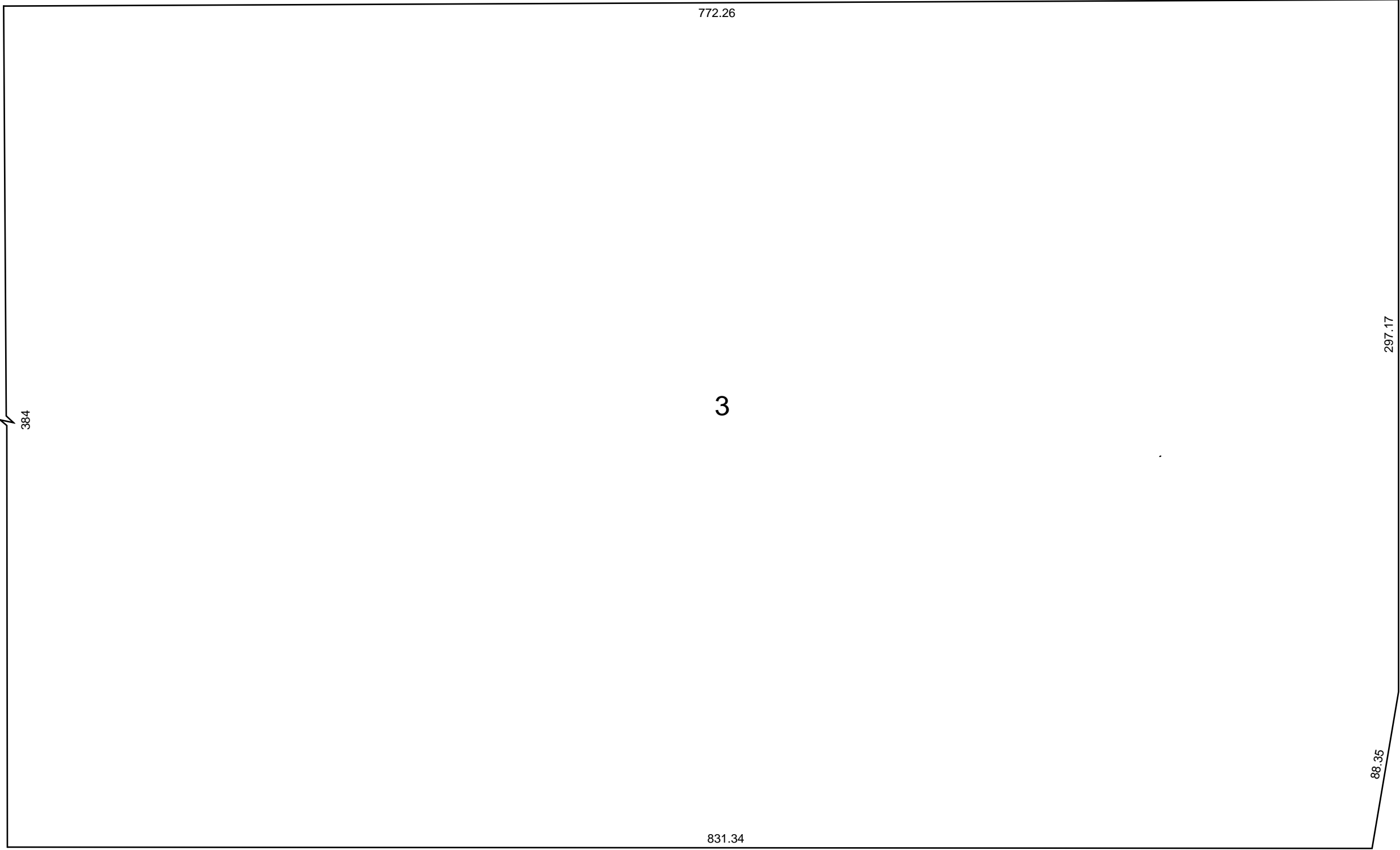
REVISED '89

REVISED 2016



A R M Y

BLK. 4347



BLK. 4349

M A R I N