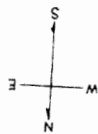


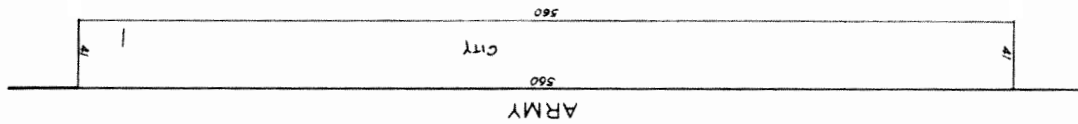
**4347**  
NEW POTRERO BLK 255 & 256  
Revised '89  
REVISED 2016



Lot 1 from 4-B-E, INTO CITY - '89

LOTS MERGED  
INTO LOT  
2-9 & 13-16  
11/2/12  
1/1/1943

© COPYRIGHT SAN FRANCISCO  
CITY & COUNTY ASSESSOR 1995



BLK. 4349

BLK. 4346

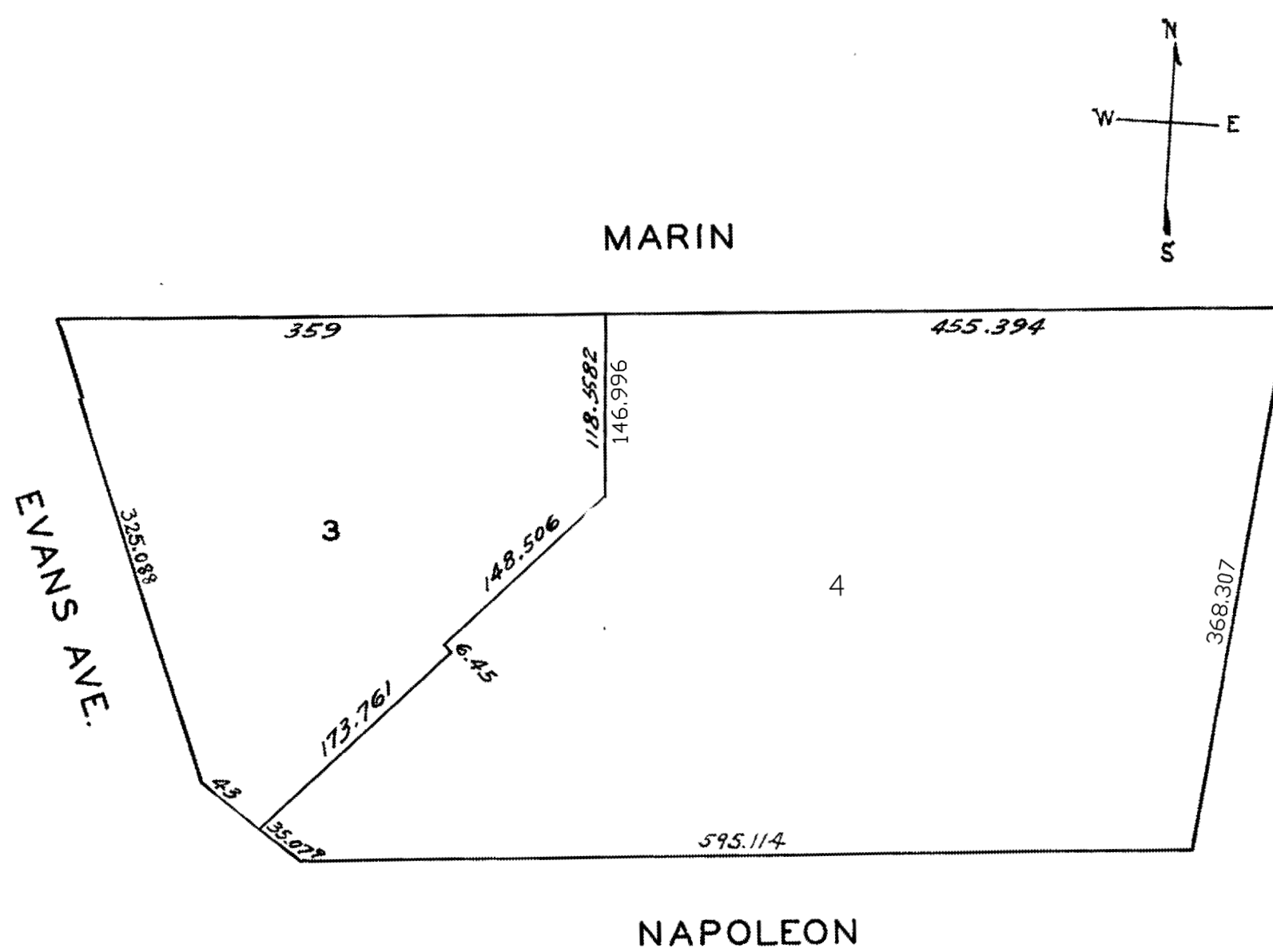
Lots 2 to 9, and 13 to 16, merged into Lot 10, '1938'  
Lot 10 into a portion of Block 4346, Lot 3 for 2016 roll

lots 1&2 into lot 4 for 2003 roll

4347<sup>A</sup>

Part of old 4347

Revised 2003

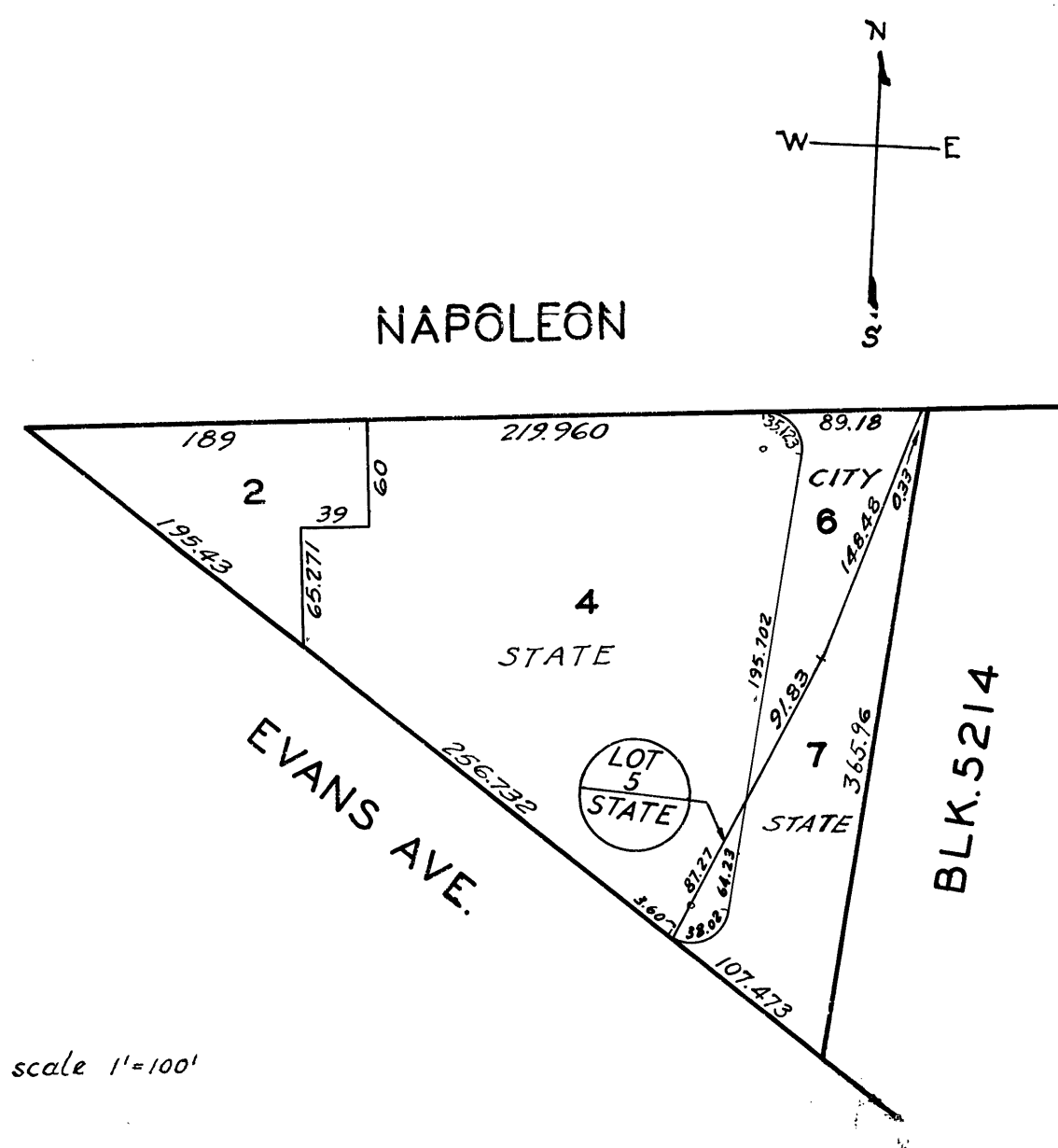


scale - 1" = 100'

4347<sup>B</sup>

Part of old 4347

REVISED '62  
REVISED '64  
" '71

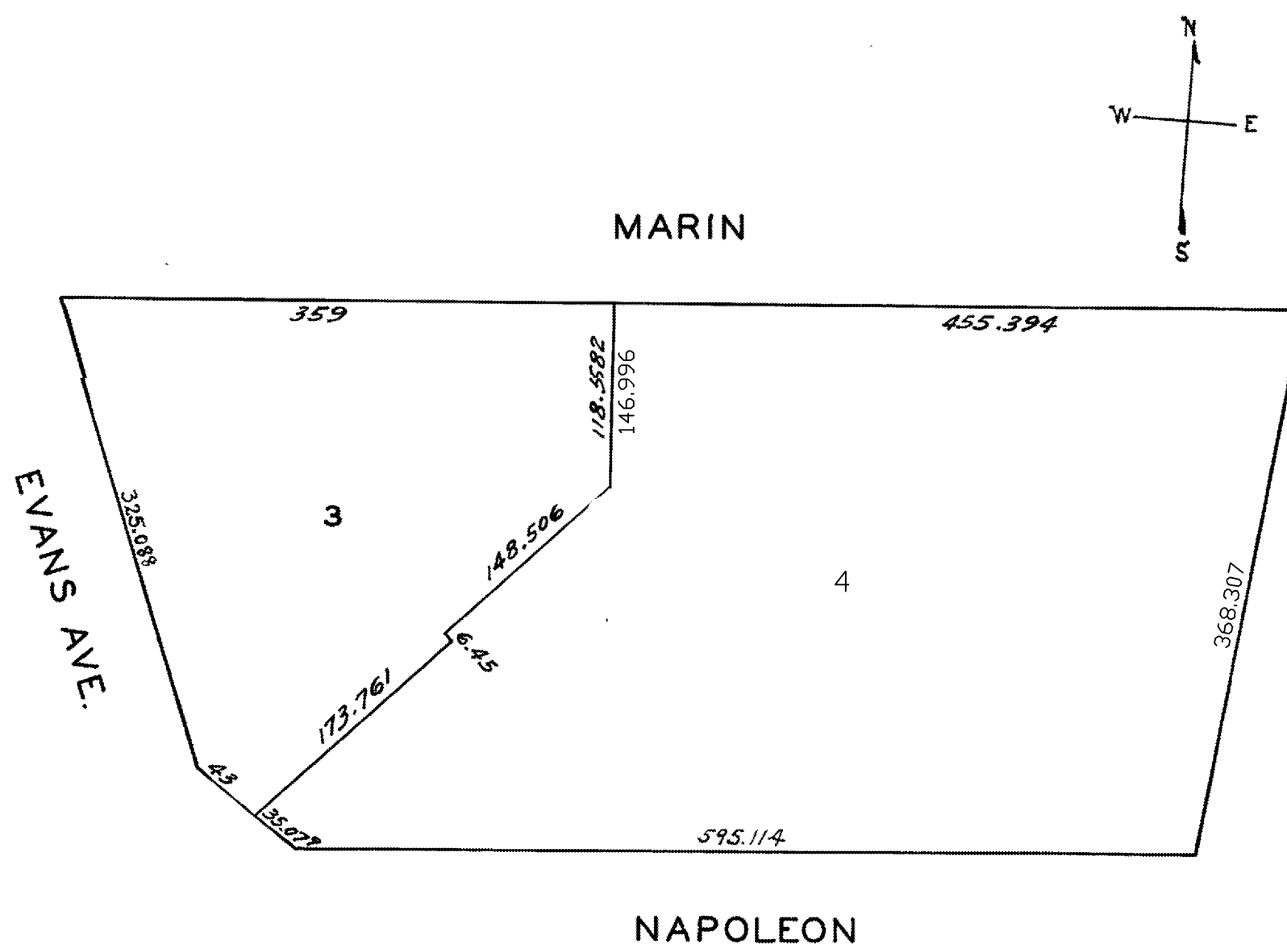


lots1&2 into lot4 for 2003 roll

4347<sup>A</sup>

Part of old 4347

Revised 2003



scale - 1" = 100'

4347<sup>B</sup>

Part of old 4347

REVISED '62  
REVISED '64  
" '71

