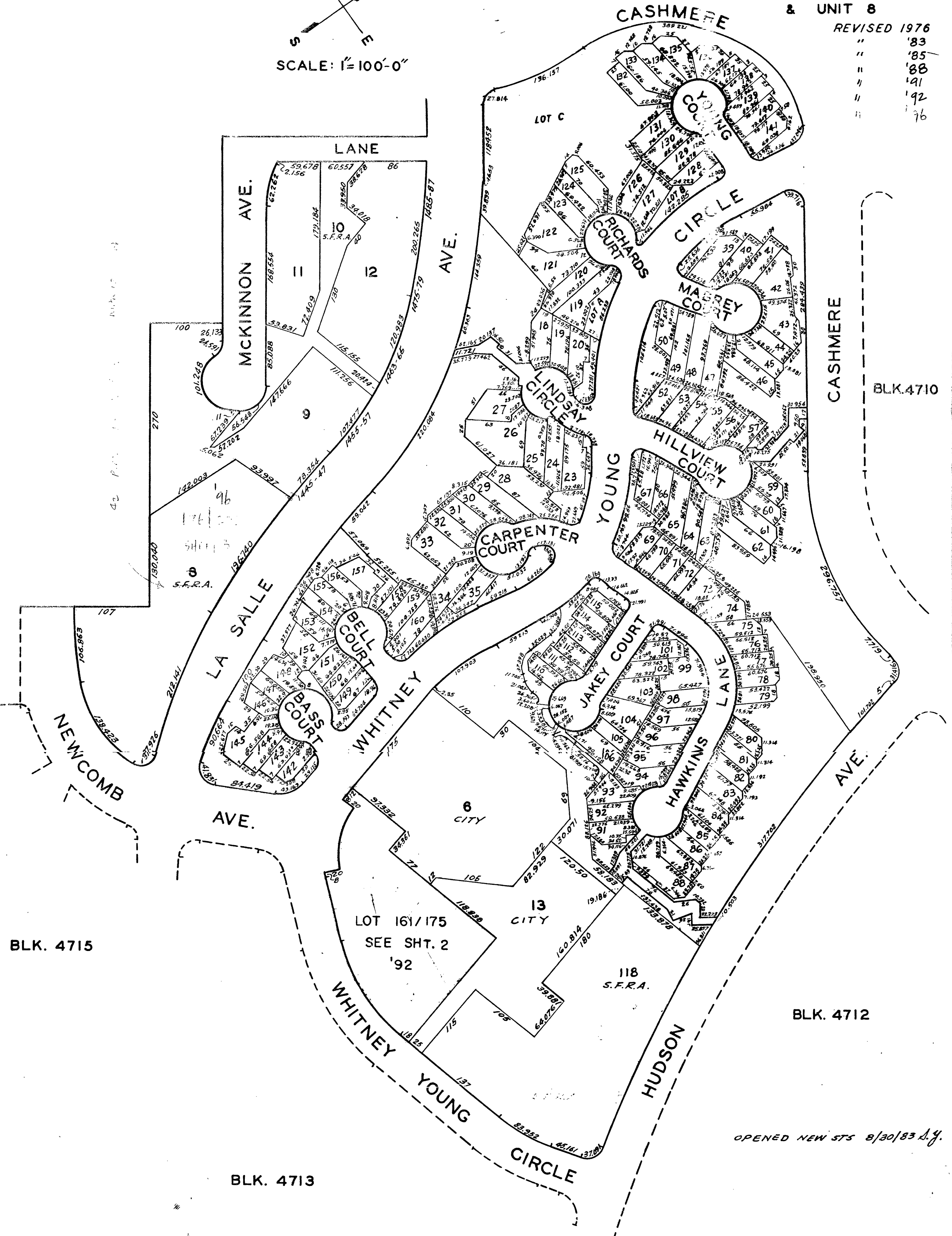
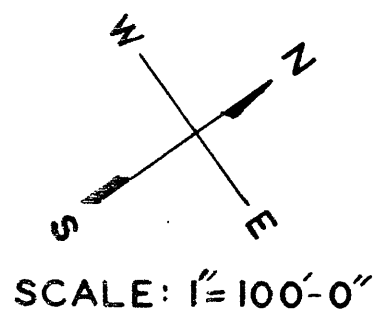


LOTS INTO LOTS  
 2, 3 118 '83  
 14 106/108, 116 '83  
 100 15/99, 101/105, 109/115 & 117 '83

© COPYRIGHT SAN FRANCISCO  
 CITY & COUNTY ASSESSOR 1995

SHEET 1 **4711**  
 THE NEW HUNTERS POINT  
 COMMUNITY UNIT 2  
 & UNIT 8

REVISED 1976  
 " '83  
 " '85  
 " '88  
 " '91  
 " '92  
 " '96



BLK. 4715

BLK. 4713

BLK. 4712

OPENED NEW STS 8/30/83 L.Y.

