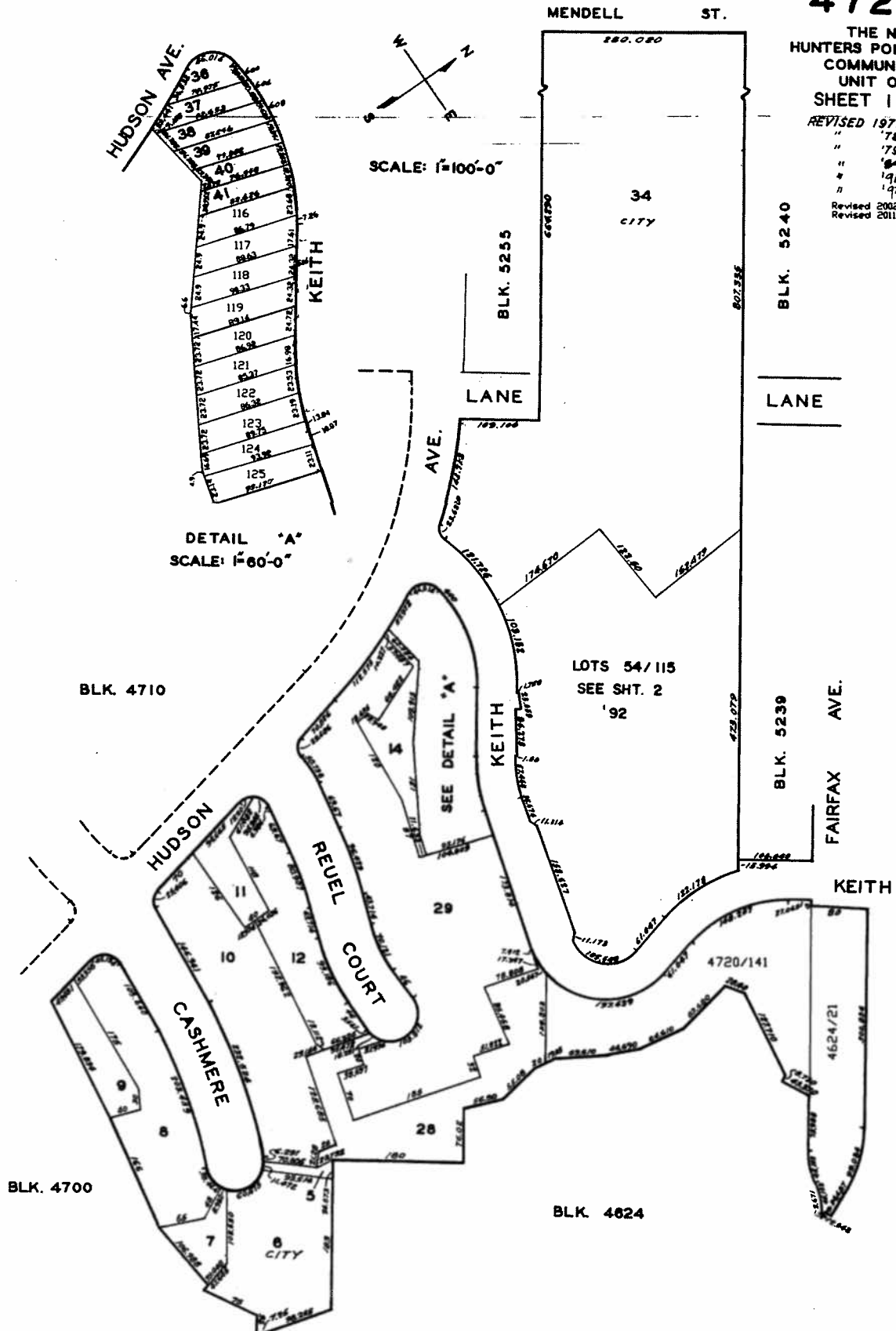


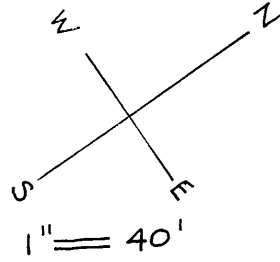
lots 5, 7, 9, 11, 14 & 26 FROM S.F.R.A INTO PRIVATE - 1989  
lots 42/53 into lots 116/125 for 2002 roll  
block 4720 lot 27 into block 4624 lot 21 & block 4720 lot 14 for 2011 roll (20101934743)

THE NEW  
HUNTERS POINT  
COMMUNITY  
UNIT ONE  
SHEET 1

"	'78
"	'79
"	'87
"	'91
"	'92
Revised	2002
Revised	2011



© COPYRIGHT SAN FRANCISCO  
CITY & COUNTY ASSESSOR 1995



# 4720

## SHT. 2

1992 ROLL

